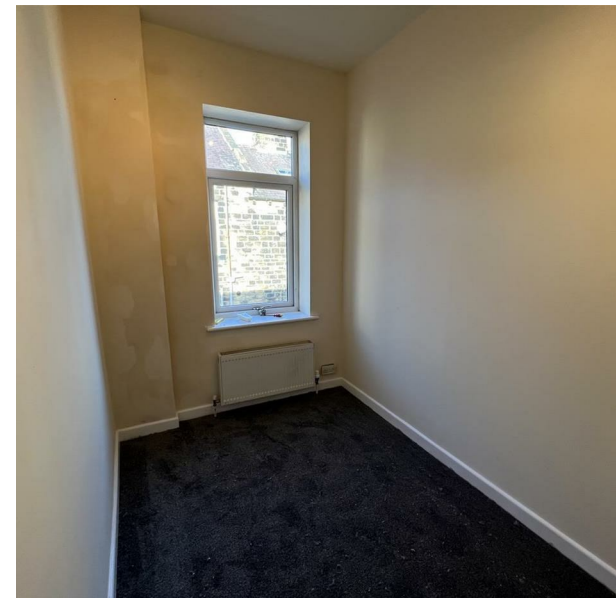
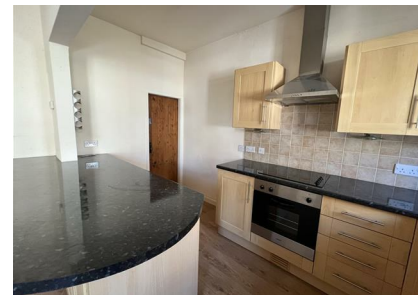


Pink Street, Haworth, Keighley, Yorkshire, BD22 8AX

£675 Per Month

Council Tax Band: A



Open House are delighted to offer to let this well presented two bedroom back to back terrace in the heart of Haworth.

This property benefits from being close to local amenities and public transport routes.

Council tax band: A

The property briefly compromises of:



Keighley



| Energy Efficiency Rating | | |
|---|-------------------------|-----------|
| | Current | Potential |
| Very energy efficient - lower running costs | | |
| (92 plus) A | | |
| (81-91) B | | |
| (69-80) C | | 78 |
| (55-68) D | | |
| (39-54) E | 51 | |
| (21-38) F | | |
| (1-20) G | | |
| Not energy efficient - higher running costs | | |
| England & Wales | EU Directive 2002/91/EC | |