

£265,000

Occupation Lane

Keighley, BD22 7LB

PROPERTY SUMMARY

Situated on Occupation Lane in the charming village of Oakworth, Keighley, this impressive four-bedroom link detached home offers a perfect blend of comfort and style.

One of the standout features of this home is the ground floor bedroom, complemented by a convenient shower room, making it ideal for guests or those seeking single-level living. The remaining three bedrooms are generously sized, providing ample space for family or visitors.

The property is immaculate throughout, showcasing modern finishes and thoughtful details that enhance its appeal. The impressive large garden offers multiple zones for relaxation and recreation, whether you wish to entertain guests, enjoy a quiet afternoon, or cultivate a garden, this outdoor space caters to all your needs.

Parking is also a breeze with a private drive, and detached garage.

This property briefly comprises of:

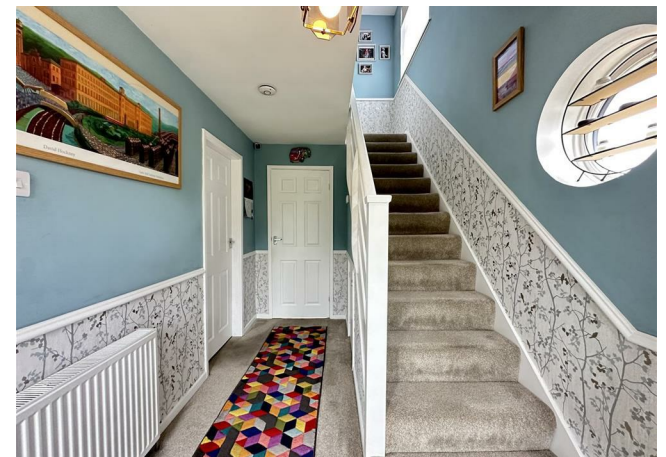
4



2



1

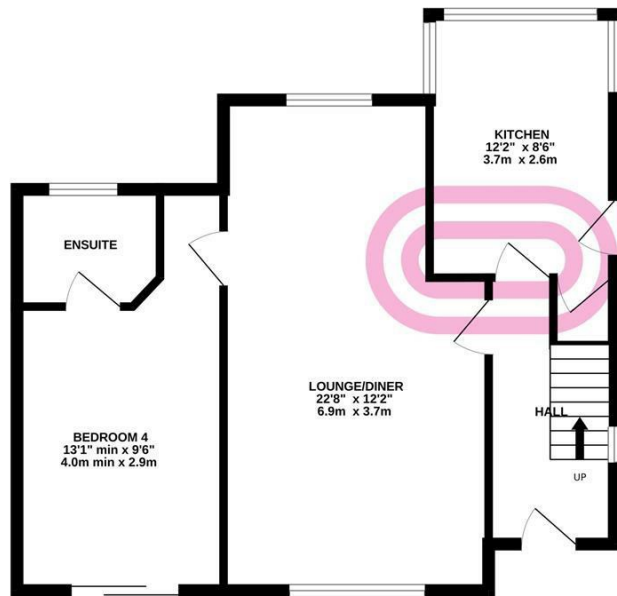




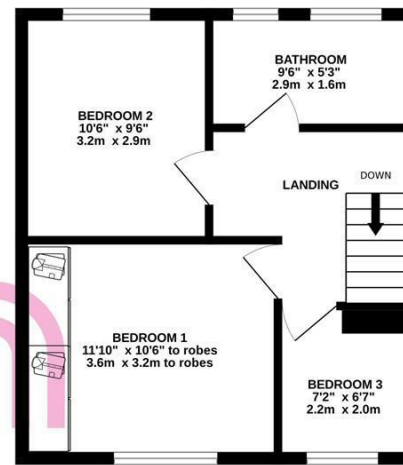




GROUND FLOOR



1ST FLOOR



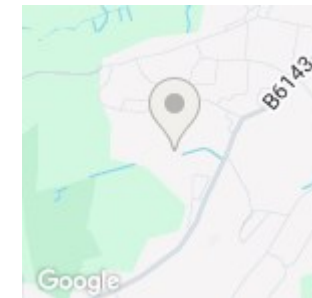
Whilst every attempt has been made to ensure the accuracy of the floorplan contained here, measurements of doors, windows, rooms and any other items are approximate and no responsibility is taken for any error, omission or mis-statement. This plan is for illustrative purposes only and should be used as such by any prospective purchaser. The services, systems and appliances shown have not been tested and no guarantee as to their operability or efficiency can be given.
Made with Metropix ©2025

LOCAL AUTHORITY
Bradford Council

TENURE
Freehold

COUNCIL TAX BAND
D

VIEWINGS
By prior appointment only



Energy Efficiency Rating		
	Current	Potential
Very energy efficient - lower running costs		
(92 plus) A		
(81-91) B		
(69-80) C		
(55-68) D		
(39-54) E		
(21-38) F		
(1-20) G		
Not energy efficient - higher running costs		
England & Wales	EU Directive 2002/91/EC	

Agents Note: Whilst every care has been taken to prepare these particulars, they are for guidance purposes only. All measurements are approximate and are for general guidance purposes only and whilst every care has been taken to ensure their accuracy, they should not be relied upon and potential buyers/tenants are advised to recheck the measurements