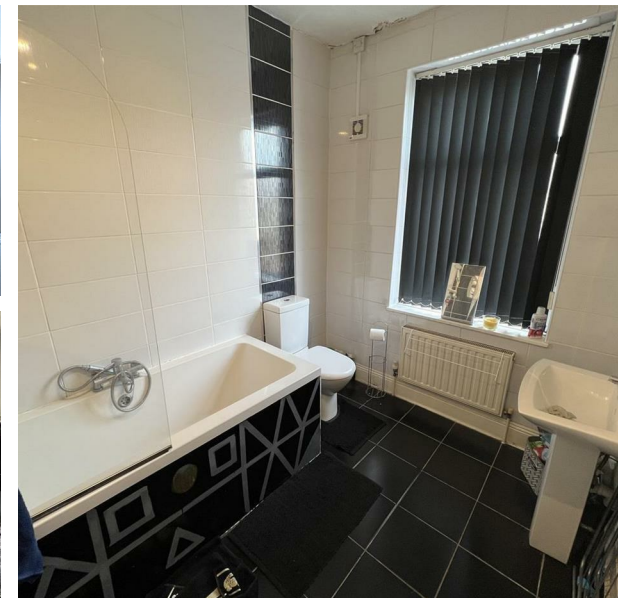


Esmond Street, Bradford, Yorkshire, BD7 4DX

£595 Per Month

Council Tax Band: A



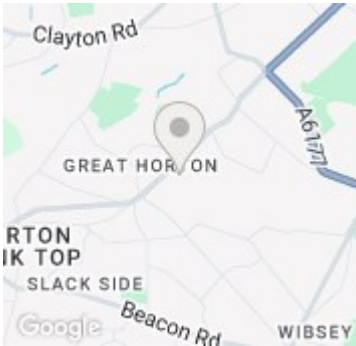
Open House are delighted to offer to let this well presented one bedroom mid terrace in the popular area of BD7. Close to local amenities and bus routes.

This property is Council Tax Band A. EPC to follow.

The property briefly compromises of:



Keighley



Energy Efficiency Rating		
	Current	Potential
Very energy efficient - lower running costs		
(92 plus) A		
(81-91) B		79
(69-80) C		
(55-68) D	55	
(39-54) E		
(21-38) F		
(1-20) G		
Not energy efficient - higher running costs		
England & Wales	EU Directive 2002/91/EC	