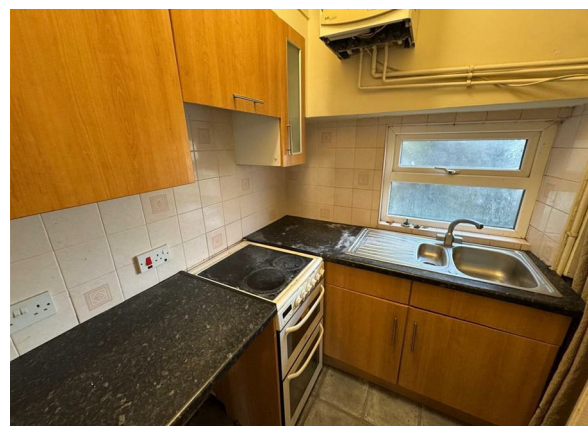


Woodville Grove, Cross Roads, Keighley, BD22 9BB

£725

Council Tax Band: A



Nestled in the charming area of Cross Roads, Keighley, this delightful cottage presents an excellent opportunity for those seeking a cosy and inviting home. With its picturesque cottage style, this property exudes character and warmth, making it an ideal retreat for individuals or couples.

The cottage features a well-appointed reception room, perfect for relaxing or entertaining guests. The master bedroom offers a peaceful sanctuary, while the bathroom is conveniently designed to meet your everyday needs. Recently decorated, the interior boasts a fresh and modern feel, allowing you to move in with ease and make it your own.

Situated in a popular location, this property benefits from a friendly community atmosphere and easy access to local amenities. Whether you enjoy leisurely walks in the surrounding countryside or prefer the convenience of nearby shops and services, this cottage provides the best of both worlds.



Keighley



Energy Efficiency Rating		
	Current	Potential
Very energy efficient - lower running costs		
(92 plus) A		88
(81-91) B		
(69-80) C		
(55-68) D	62	
(39-54) E		
(21-38) F		
(1-20) G		
Not energy efficient - higher running costs		
England & Wales		EU Directive 2002/91/EC