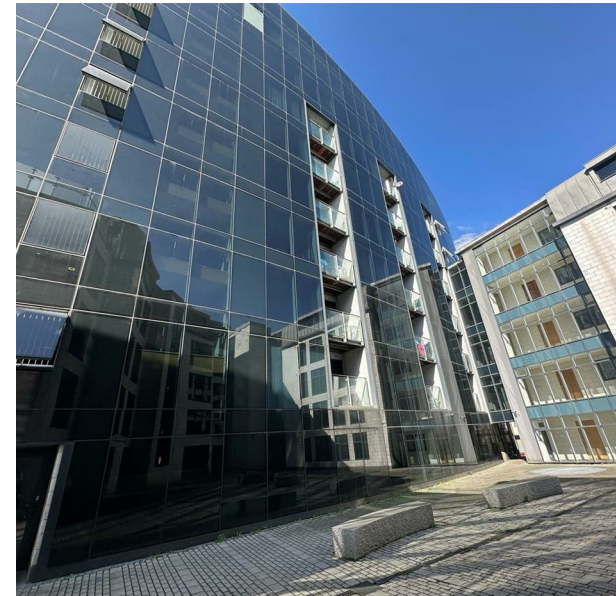


Leeds Road, Bradford, BD1 5BL

£795 Per Month

Council Tax Band: B



Nestled on Leeds Road in Bradford, this modern flat offers a delightful living experience for those seeking comfort and convenience. With two well-proportioned bedrooms, this property is ideal for small families, couples, or individuals looking for a stylish home. The flat features a spacious reception room, perfect for relaxation or entertaining guests.

One of the standout features of this property is its excellent transport links, making commuting a breeze. Whether you are heading to work or exploring the vibrant city of Bradford, you will find that getting around is both easy and efficient. Additionally, the flat is situated close to local amenities, ensuring that shops, cafes, and essential services are just a short stroll away.

This property is available for long-term rental, providing a stable and secure living environment. With its modern design and prime location, this flat is a fantastic opportunity for anyone looking to settle in a thriving area. Don't miss the chance to make this charming flat your new home.



Keighley



Energy Efficiency Rating		
	Current	Potential
Very energy efficient - lower running costs		
(92 plus) A		
(81-91) B		
(69-80) C	71	80
(55-68) D		
(39-54) E		
(21-38) F		
(1-20) G		
Not energy efficient - higher running costs		
England & Wales	EU Directive 2002/91/EC	