



£179,950

Beacon Road
Bradford, BD6 3ET

PROPERTY SUMMARY

We are pleased to offer to the market this well presented, three bedroom end-terraced property on the popular Beacon Road. Situated close to local amenities, schools and transport links this property would suit a variety of buyers and offers great forward potential.

Consisting of three double bedrooms, an extended kitchen and two reception rooms, this property provides ample living space for a family and also features a private, gated parking area to the rear.

Viewings are advised to see all that this property has to offer.

This property briefly comprises of:

3



1



2









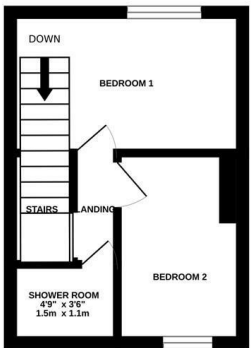
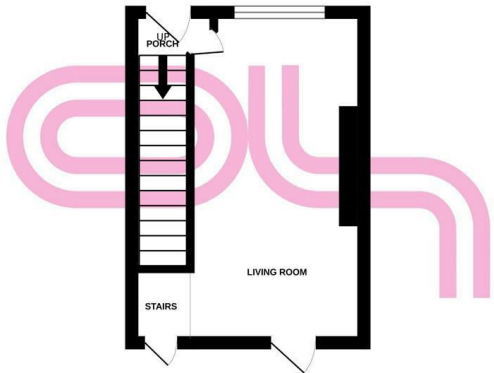
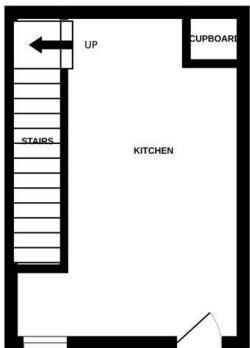


BASEMENT LEVEL

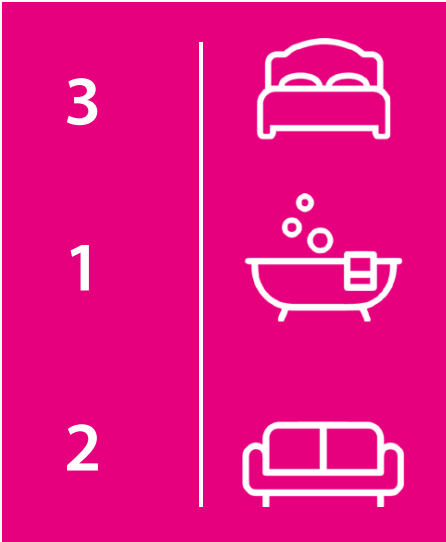


GROUND FLOOR

1ST FLOOR



Whilst every attempt has been made to ensure the accuracy of the floorplan contained here, measurements of doors, windows, rooms and any other items are approximate and no responsibility is taken for any error, omission or mis-statement. This plan is for illustrative purposes only and should be used as such by any prospective purchaser. The services, systems and appliances shown have not been tested and no guarantee as to their operability or efficiency can be given.
Made with Metropix ©2025



Energy Efficiency Rating		
	Current	Potential
Very energy efficient - lower running costs		
(92 plus) A		
(81-91) B		
(69-80) C		
(55-68) D		
(39-54) E		
(21-38) F		
(1-20) G		
Not energy efficient - higher running costs		
England & Wales	EU Directive 2002/91/EC	



Agents Note: Whilst every care has been taken to prepare these particulars, they are for guidance purposes only. All measurements are approximate and are for general guidance purposes only and whilst every care has been taken to ensure their accuracy, they should not be relied upon and potential buyers/tenants are advised to recheck the measurements.