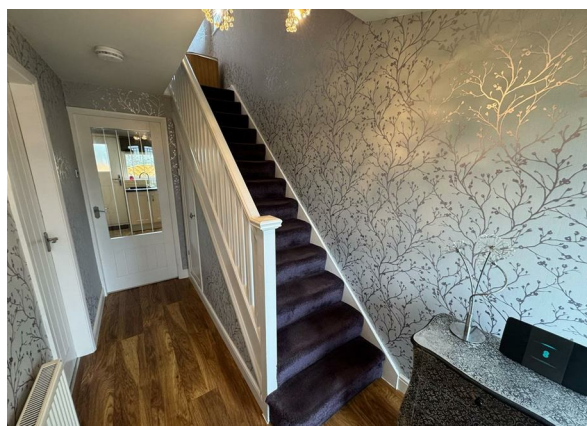


Harewood Crescent, Oakworth, Keighley, BD22 7NJ

Asking Price £209,950

Council Tax Band: C



Situated in the charming Village of Oakworth, this well-presented semi-detached house on Harewood Crescent offers a delightful family home. With three spacious bedrooms, this property is perfect for those seeking comfort and practicality. The inviting reception room provides a warm and welcoming space for relaxation and entertaining guests.

Set on a good-sized plot, the house benefits from a private garden, ideal for outdoor activities or simply enjoying the fresh air. The property is conveniently located close to local schools, making it an excellent choice for families with children.

This home combines modern living with a peaceful neighbourhood, ensuring a balanced lifestyle. Whether you are a first-time buyer or looking to settle down in a friendly community, this semi-detached house is a wonderful opportunity not to be missed.



Keighley



Energy Efficiency Rating		
	Current	Potential
Very energy efficient - lower running costs		
(92 plus) A		87
(81-91) B		
(69-80) C		
(55-68) D	62	
(39-54) E		
(21-38) F		
(1-20) G		
Not energy efficient - higher running costs		
England & Wales	EU Directive 2002/91/EC	