

Wheathead Lane, Keighley, Yorkshire, BD22 6NL

Asking Price £124,995

Council Tax Band: B



We are delighted to offer to the market this lovely two bedroom semi-detached property in the Wheathead Lane area of Keighley.

This spacious family property, with low maintenance rear garden, is close to local amenities and has strong transport links

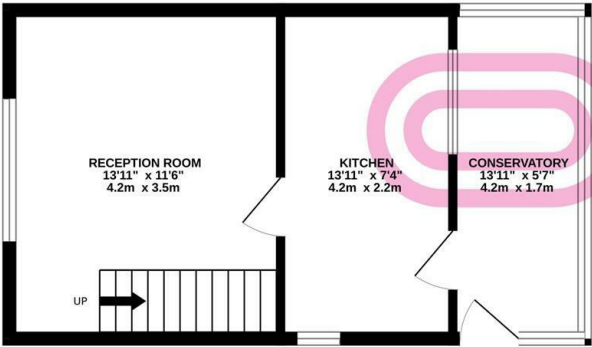
Council Tax band- B

The property briefly compromises of:

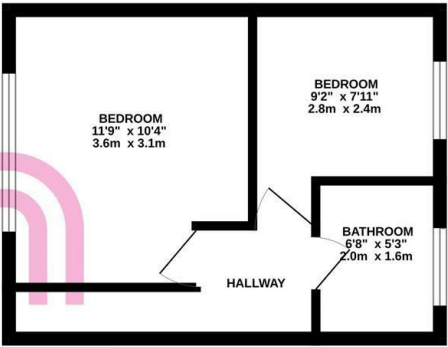


Keighley

GROUND FLOOR
339 sq.ft. (31.5 sq.m.) approx.



1ST FLOOR
254 sq.ft. (23.6 sq.m.) approx.



TOTAL FLOOR AREA : 594 sq.ft. (55.2 sq.m.) approx.

Whilst every attempt has been made to ensure the accuracy of the floorplan contained here, measurements of doors, windows, rooms and any other items are approximate and no responsibility is taken for any error, omission or mis-statement. This plan is for illustrative purposes only and should be used as such by any prospective purchaser. The services, systems and appliances shown have not been tested and no guarantee as to their operability or efficiency can be given.
Made with Metropix ©2025



Energy Efficiency Rating		
	Current	Potential
Very energy efficient - lower running costs		
(92 plus) A		
(81-91) B		
(69-80) C		78
(55-68) D	60	
(39-54) E		
(21-38) F		
(1-20) G		
Not energy efficient - higher running costs		
England & Wales	EU Directive 2002/91/EC	