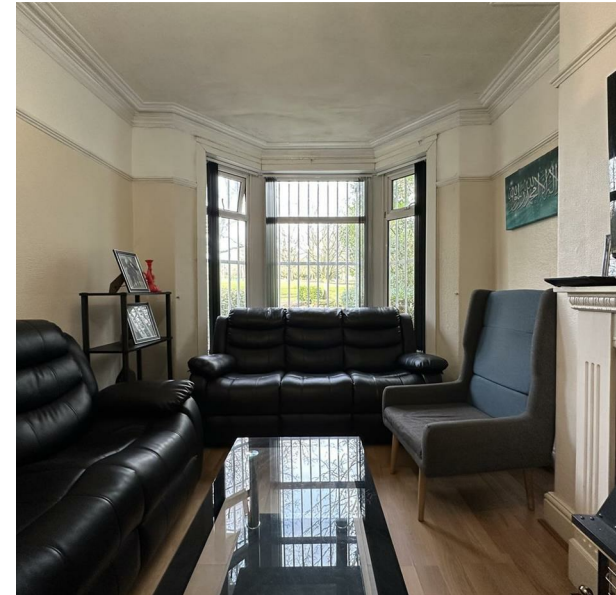


Selborne Grove, Keighley, BD21 1HP

Asking Price £139,950

Council Tax Band: B





We are excited to present this charming 3-bedroom terraced family home on Selbourne Grove, Keighley.

Perfectly situated near schools, shops, parks, and local amenities, this property offers both convenience and comfort.

Featuring gated off-street parking, a modern kitchen and bathroom, and plenty of space for family living, it's an ideal home for those looking to settle in a well-connected area.

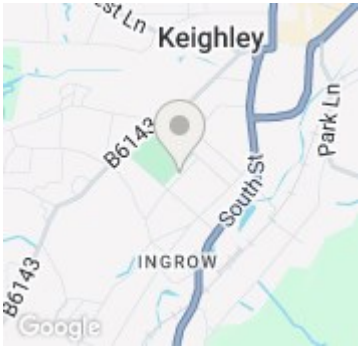
Council Tax Band B

Viewing Highly Recommended.

This property briefly comprises:



Keighley



Energy Efficiency Rating		
	Current	Potential
Very energy efficient - lower running costs		
(92 plus) A		83
(81-91) B		
(69-80) C		
(55-68) D	58	
(39-54) E		
(21-38) F		
(1-20) G		
Not energy efficient - higher running costs		
England & Wales	EU Directive 2002/91/EC	