

Carr Lane, Riddlesden, Yorkshire, BD20 5HN

£340,000

Council Tax Band: D



Welcome to this charming semi-detached house located on Carr Lane! This property boasts a spacious layout with 5 bedrooms, and 3 bathrooms, providing ample space for a growing family or those who love to entertain.

The house features a convenient toilet on the ground floor, making it practical for everyday use. With ample parking, you won't have to worry about finding a spot on busy days.

One of the highlights of this property is its popular location, offering easy access to local amenities, schools, and transport links. The garden provides a lovely outdoor space where you can relax or host gatherings with friends and family.

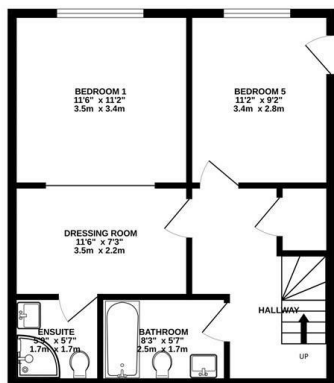
Whether you're looking for a family home with plenty of room to grow or a property that is ideal for socialising, this semi-detached house on Carr Lane has it all. Don't miss out on the opportunity to make this house your new home!

This property briefly comprises of:

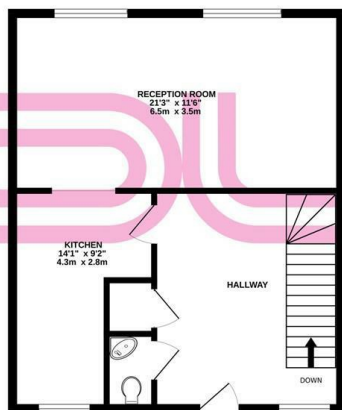


Keighley

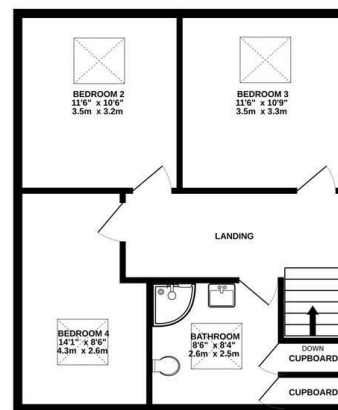
GROUND FLOOR
495 sq.ft. (46.0 sq.m.) approx.



1ST FLOOR
545 sq.ft. (50.6 sq.m.) approx.

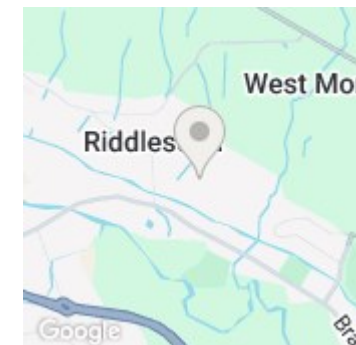


2ND FLOOR
545 sq.ft. (50.6 sq.m.) approx.



TOTAL FLOOR AREA : 1584 sq.ft. (147.2 sq.m.) approx.

Whilst every attempt has been made to ensure the accuracy of the floorplan contained here, measurements of doors, windows, rooms and any other items are approximate and no responsibility is taken for any error, omission or mis-statement. This plan is for illustrative purposes only and should be used as such by any prospective purchaser. The services, systems and appliances shown have not been tested and no guarantee as to their operability or efficiency can be given.
Made with Metropix ©2024



Energy Efficiency Rating		Current	Potential
Very energy efficient - lower running costs			
(92 plus) A			
(81-91) B			84
(69-80) C		74	
(55-68) D			
(39-54) E			
(21-38) F			
(1-20) G			
Not energy efficient - higher running costs			
England & Wales		EU Directive 2002/91/EC	