

Minnie Street, Keighley, BD21 1HY

£95,000

Council Tax Band: A



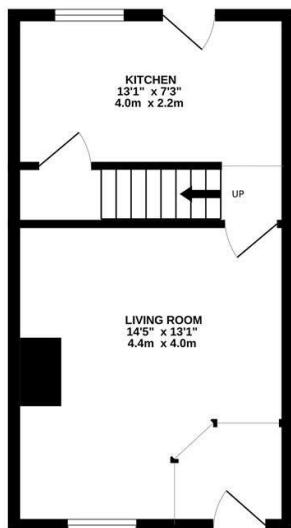
Welcome to Minnie Street, Keighley - a charming location that offers a great investment opportunity! Situated in a popular area, this property is sure to attract interest from a variety of candidates.. Don't miss out on the chance to own a piece of this desirable location - schedule a viewing today!

This property briefly comprises of:

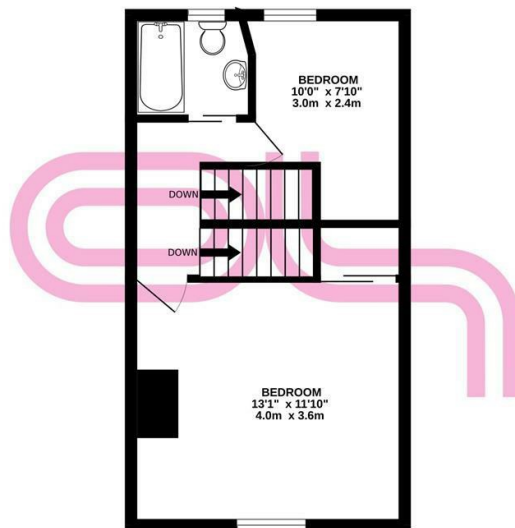


Keighley

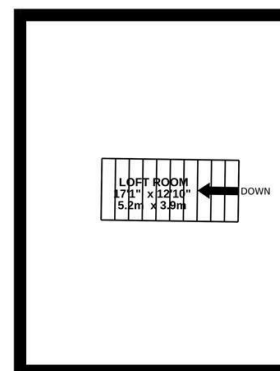
GROUND FLOOR
314 sq.ft. (29.2 sq.m.) approx.



1ST FLOOR
314 sq.ft. (29.2 sq.m.) approx.

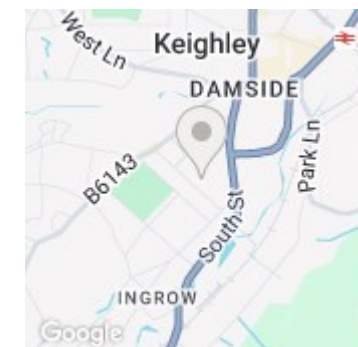


2ND FLOOR
218 sq.ft. (20.3 sq.m.) approx.



TOTAL FLOOR AREA : 846 sq.ft. (78.6 sq.m.) approx.

Whilst every attempt has been made to ensure the accuracy of the floorplan contained here, measurements of doors, windows, rooms and any other items are approximate and no responsibility is taken for any error, omission or mis-statement. This plan is for illustrative purposes only and should be used as such by any prospective purchaser. The services, systems and appliances shown have not been tested and no guarantee as to their operability or efficiency can be given.
Made with Metropix ©2024



Energy Efficiency Rating		Current	Potential
<i>Very energy efficient - lower running costs</i>			
(92 plus)	A		
(81-91)	B		
(69-80)	C		
(55-68)	D	56	73
(39-54)	E		
(21-38)	F		
(1-20)	G		
<i>Not energy efficient - higher running costs</i>			
England & Wales		EU Directive 2002/91/EC	