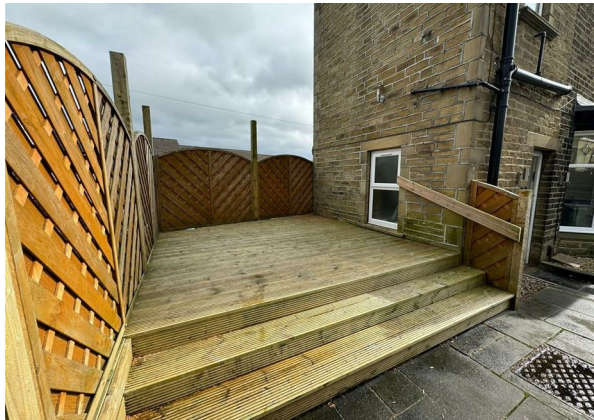


Skipton Road, Keighley, BD20 6AT

£875 Per Month

Council Tax Band: B

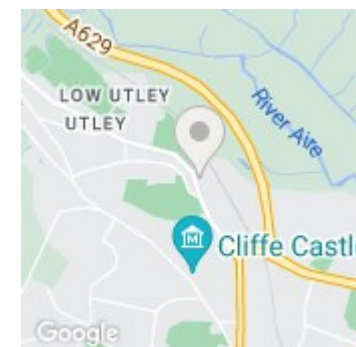


We are pleased to offer to the market this well presented three bedroom end terraced property on the popular Skipton Road. Located close to the Airedale Hospital, this property would be perfect for a family and features a lovely patio / decked front garden area.

This property briefly comprises of:



Keighley



Energy Efficiency Rating		
	Current	Potential
Very energy efficient - lower running costs		
(92 plus) A		
(81-91) B		
(69-80) C		72
(55-68) D		
(39-54) E	50	
(21-38) F		
(1-20) G		
Not energy efficient - higher running costs		
England & Wales	EU Directive 2002/91/EC	