



PCM
£675 PCM

Westcourt Road, Worthing

- Newly redecorated fully furnished • Communal lounge double room
- Shared kitchen
- Family bathroom with separate W.C
- Private garden
- Conveniently located close to local amenities
- Rent to include utility bills

SELECTION OF FOUR AVAILABLE ROOMS TO LET - INCLUSIVE OF BILLS

A newly redecorated and well-presented double room is available in a friendly house of multiple occupancy. The room is let fully furnished with a double bed, wardrobe, desk, and chair, making it ideal for both working professionals and students.

The property has been newly redecorated throughout and benefits from excellent shared facilities, including a communal lounge, a fully equipped kitchen, a family bathroom with separate W.C., and a private garden perfect for relaxing or socialising.

Conveniently located close to local amenities and public transport links, this property offers comfortable living in a welcoming shared home.

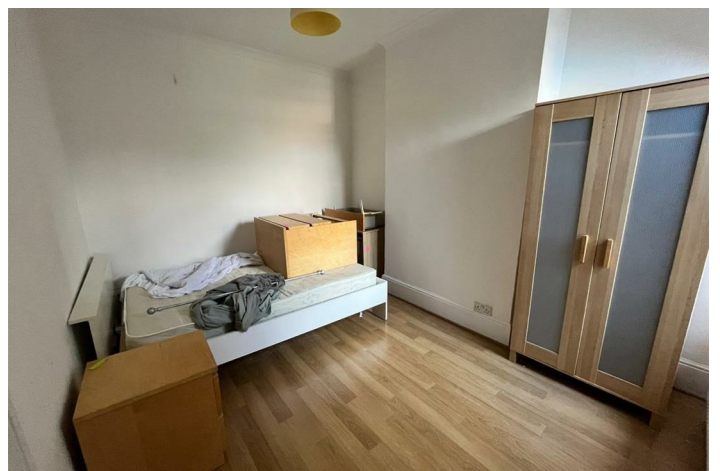
Available end of September 2025.

T: 01903 331247 E: info@robertluff.co.uk
www.robertluff.co.uk

**Robert
Luff & Co**
Sales | Lettings | Commercial



Accommodation





The information provided about this property does not constitute or form any part of an offer or contract, nor may it be regarded as representations. All interested parties must verify accuracy and your solicitor must verify tenure/lease information, fixtures and fittings and, where the property has been extended/converted, planning/building regulation consents. All dimensions are approximate and quoted for guidance only as are floor plans which are not to scale and their accuracy cannot be confirmed. References to appliances and/or services does not imply that they are necessarily in working order or fit for the purpose.