



The Pallant, Worthing



PCM
£1,600 PCM

- THREE BEDROOM HOUSE
- THROUGH LOUNGE DINING ROOM
- RECENTLY DECORATED THROUGHOUT in 2024
- NEW CARPETS THROUGHOUT in 2024
- FRONT AND REAR GARDENS
- FITTED KITCHEN
- AVAILBALE AUGUST 2025

** OPEN DAY 28TH OF JUNE **

ROBERT LUFF & CO are delighted to offer for rent a three bedroom house located in Goring-by-Sea. Comprising entrance hall, through lounge dining room, fitted kitchen, front and rear garden. Upstairs there are three bedrooms, two double bedrooms and one single bedroom and a family bathroom suite.

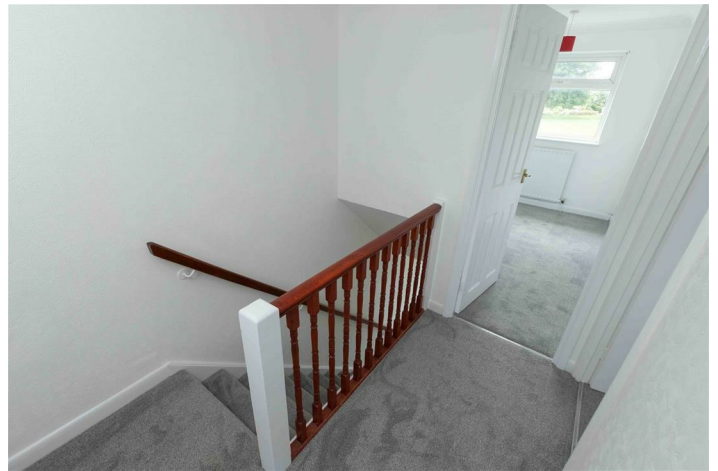
AVAILBALE AUGUST 2025

T: 01903 331247 E: info@robertluff.co.uk
www.robertluff.co.uk

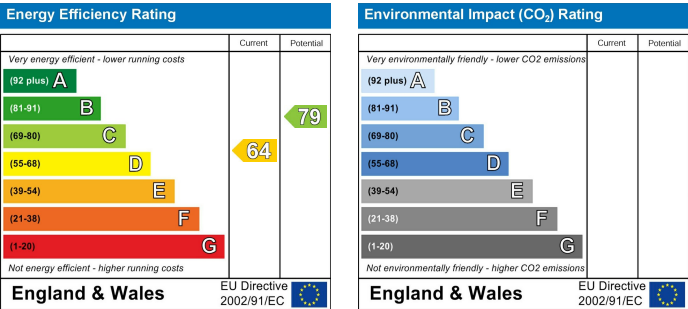
Robert
Luff & Co
Sales | Lettings | Commercial



Accommodation



30 Guildbourne Centre, Worthing, West Sussex, BN11 1LZ
T: 01903 331247 E: info@robertluff.co.uk
www.robertluff.co.uk



The information provided about this property does not constitute or form any part of an offer or contract, nor may it be regarded as representations. All interested parties must verify accuracy and your solicitor must verify tenure/lease information, fixtures and fittings and, where the property has been extended/converted, planning/building regulation consents. All dimensions are approximate and quoted for guidance only as are floor plans which are not to scale and their accuracy cannot be confirmed. References to appliances and/or services does not imply that they are necessarily in working order or fit for the purpose.