



Per Month  
£2,500 Per Month

## Brighton Road, Worthing

- Substantial four bedroom HMO maisonette - SUIT SHARERS
- Newly redecorated
- Newly carpeted
- Gas central heating
- Breakfast kitchen
- En-suite to primary
- Further bathroom
- Off street parking
- Close to sea, beach, easy access to station
- ROOM 1 : £750 ROOM 2: £750 ROOM 3: £650 ROOM 4: £650

Robert Luff & Co are delighted to offer this charming top floor, four-bedroom HMO PROPERTY - SUIT SHARERS flat situated in the heart of Worthing. The property features a spacious and bright living area, a sleek modern kitchen, and four bedrooms.

Located just a short stroll from the seafront and local amenities, this flat offers the perfect blend of comfort and convenience in a vibrant coastal setting.

FURNISHED, LAUNDRY FACILITIES, COMMUNAL KITCHEN WITH SPACE FOR TABLE AND CHAIRS.

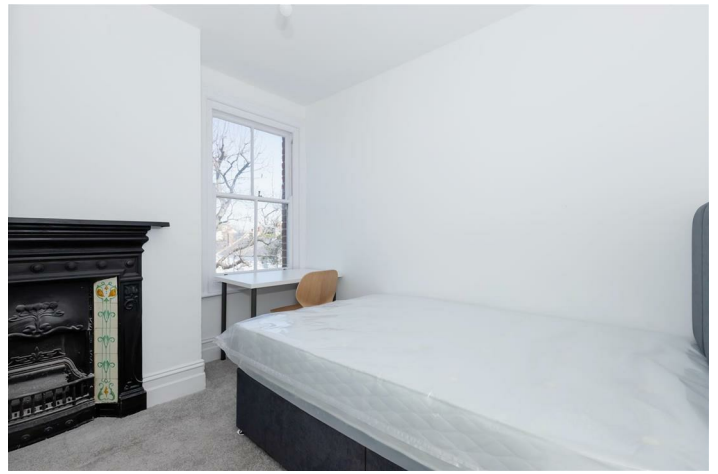
SOUTH FACING, NEW CARPETS, COMPLETELY REDECORATED, NEW CARPETS THROUGHOUT

TWO BATHROOMS WITH W.C'S

OFF STREET PARKING FOR ONE CAR

T: 01903 331247 E: [info@robertluff.co.uk](mailto:info@robertluff.co.uk)  
[www.robertluff.co.uk](http://www.robertluff.co.uk)

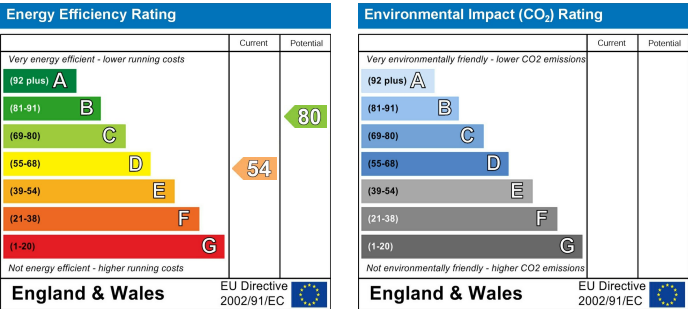
**Robert  
Luff & Co**  
Sales | Lettings | Commercial



## Accommodation



30 Guildbourne Centre, Worthing, West Sussex, BN11 1LZ  
T: 01903 331247 E: [info@robertluff.co.uk](mailto:info@robertluff.co.uk)  
[www.robertluff.co.uk](http://www.robertluff.co.uk)



The information provided about this property does not constitute or form any part of an offer or contract, nor may it be regarded as representations. All interested parties must verify accuracy and your solicitor must verify tenure/lease information, fixtures and fittings and, where the property has been extended/converted, planning/building regulation consents. All dimensions are approximate and quoted for guidance only as are floor plans which are not to scale and their accuracy cannot be confirmed. References to appliances and/or services does not imply that they are necessarily in working order or fit for the purpose.