



Richmond Road, Worthing

Price
£210,000
Share of Freehold

- Converted First Floor Flat
- Two Double Bedrooms
- Dual-Aspect Kitchen
- Character Building
- Town Centre Location
- Communal Gardens
- EPC Rating - D
- Council Tax Band - A

We are delighted to offer this character filled, first floor flat in this magnificent period property which is ideally situated in Worthing Town Centre with town centre shops, restaurants, parks, schools, bus routes, the mainline station and the seafront all nearby. The accommodation comprises two double bedrooms, a lounge/dining room with feature fireplace, a dual-aspect kitchen and a bathroom. Other benefits include communal gardens, double glazing, gas fired central heating and being CHAIN FREE.

T: 01903 331247 E: info@robertluff.co.uk
www.robertluff.co.uk

**Robert
Luff & Co**
Sales | Lettings | Commercial



Accommodation

Communal Entrance

Stairs leading up to first floor, front door into:

Entrance Hall

Hanging space, radiator, dado rail, picture rail, smooth ceiling, leaded light part glazed door into:

Lounge/Dining Room 15'8" x 12'4" (4.78 x 3.76)

Window to side aspect, enjoying views over the communal gardens, radiator, TV point, telephone point, feature fire place with wooden surround, built in recess cupboard with shelving, feature patterned wall paper wall, picture rail and smooth ceiling.

Kitchen 10'5" x 9'4" (3.18 x 2.84)

Original arch window to front aspect, window to side aspect, stainless steel single sink unit inset to work surface with mixer tap and drainer, matching range of wall and base units with built in oven and four ring gas hob, space for fridge freezer, space and plumbing for dish washer, wood effect flooring, part tiled walls, wood beam ceiling.

Bedroom One 17'4" x 10'6" (5.28 x 3.20)

Window to side aspect, TV point, built in cupboard with shelving and drawers below. Sliding doors opening to a walk in wardrobe with hanging space, shelving and lighting. Picture rail, smooth ceiling.

Bedroom Two 12'10" x 9'2" (3.91 x 2.79)

Original sash bay window to front and side access, original skirting boards, picture rail, built in cupboard with space and plumbing for washing machine, wall mounted combination boiler and shelving.

Bathroom

Frosted window to front aspect, panel enclosed bath with mixer tap and shower attachment, shower curtain and pole, low level flush WC, pedestal wash hand basin with tiled inset above and shelf. Tiled floor, part tiled walls, heated chrome towel rail, coved and textured ceiling.

Tenure

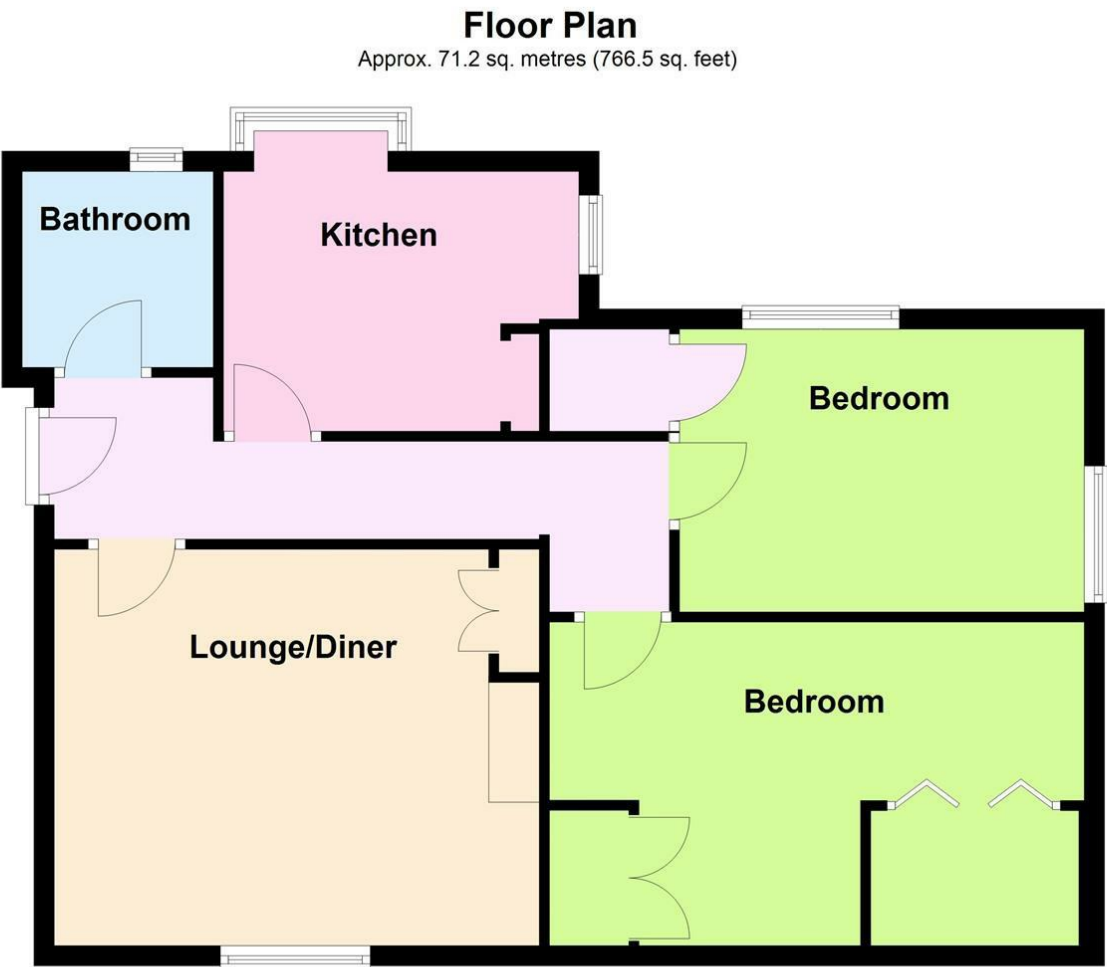
Share Of Freehold with approximately 113 years remaining on the lease.



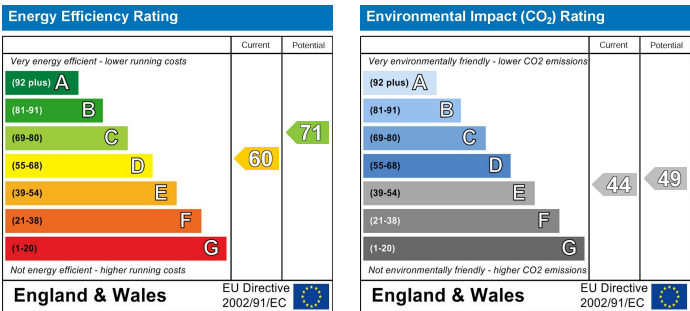
30 Guildbourne Centre, Worthing, West Sussex, BN11 1LZ

T: 01903 331247 E: info@robertluff.co.uk

www.robertluff.co.uk



Total area: approx. 71.2 sq. metres (766.5 sq. feet)



The information provided about this property does not constitute or form any part of an offer or contract, nor may it be regarded as representations. All interested parties must verify accuracy and your solicitor must verify tenure/lease information, fixtures and fittings and, where the property has been extended/converted, planning/building regulation consents. All dimensions are approximate and quoted for guidance only as are floor plans which are not to scale and their accuracy cannot be confirmed. References to appliances and/or services does not imply that they are necessarily in working order or fit for the purpose.