



£1,600

## The Pallant, Worthing

- THREE BEDROOM HOUSE
- RECENTLY DECORATED THROUGHOUT
- FRONT AND REAR GARDENS
- AVAILABLE FOR IMMEDIATE OCCUPATION
- THROUGH LOUNGE DINING ROOM
- NEW CARPETS THROUGHOUT
- FITTED KITCHEN

ROBERT LUFF & CO are delighted to offer for rent a RECENTLY REDECORATED AND RE-CARPETED three bedroom house located in Goring-by-Sea. Comprising entrance hall, through lounge dining room, fitted kitchen, front and rear garden. Upstairs there are three bedrooms, two double bedrooms and one single bedroom and a family bathroom suite.

AVAILABLE IMMEDIATELY.

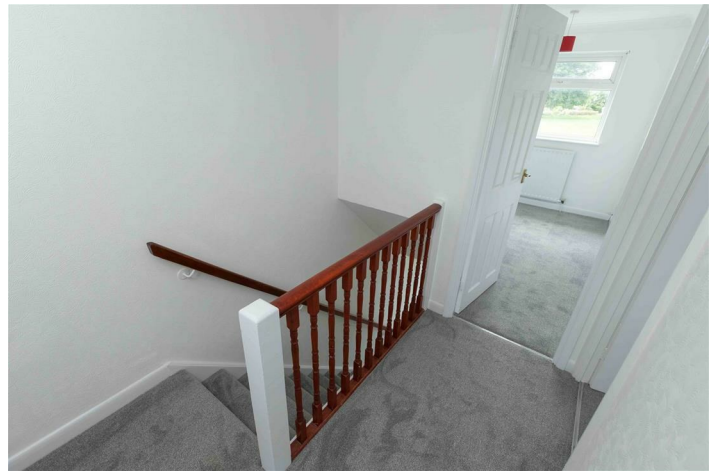
T: 01903 331247 E: [info@robertluff.co.uk](mailto:info@robertluff.co.uk)  
[www.robertluff.co.uk](http://www.robertluff.co.uk)

Robert  
Luff & Co  
Sales | Lettings | Commercial

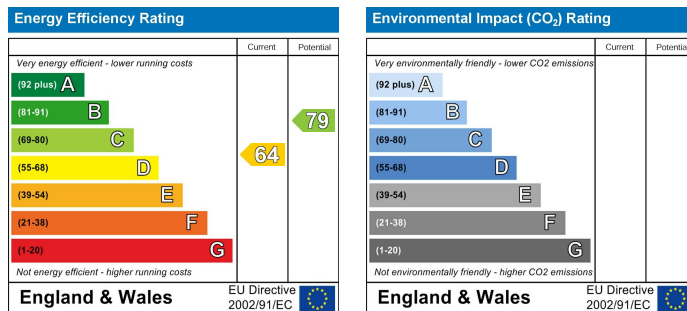




## Accommodation



30 Guildbourne Centre, Worthing, West Sussex, BN11 1LZ  
T: 01903 331247 E: info@robertluff.co.uk  
www.robertluff.co.uk



The information provided about this property does not constitute or form any part of an offer or contract, nor may it be regarded as representations. All interested parties must verify accuracy and your solicitor must verify tenure/lease information, fixtures and fittings and, where the property has been extended/converted, planning/building regulation consents. All dimensions are approximate and quoted for guidance only as are floor plans which are not to scale and their accuracy cannot be confirmed. References to appliances and/or services does not imply that they are necessarily in working order or fit for the purpose.