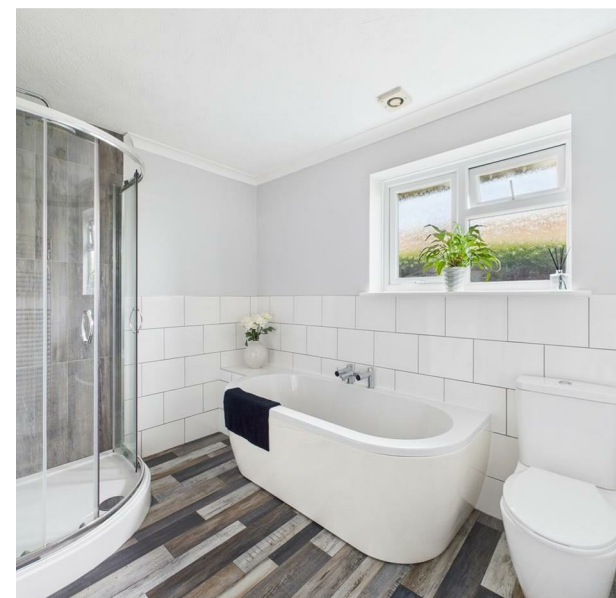


Roderick Avenue, Peacehaven, East Sussex, BN10 8BS
Asking Price £579,999



Roderick Avenue, Peacehaven, East Sussex, BN10 8BS

Asking Price £579,999

Council Tax Band: E

Located in the heart of Peacehaven on Roderick Avenue, this IMPRESSIVE detached chalet bungalow offers a remarkable blend of SPACE and VERSATILITY. With SEVEN well-proportioned bedrooms and THREE bathrooms, this property is ideal for families seeking room to grow or those looking for a home with potential for MULTI-GENERATIONAL living, thanks to its previous arrangement with annexe accommodation.

Upon entering, you are greeted by a spacious living and dining room that provides a welcoming atmosphere, perfect for both relaxation and entertaining. The modern kitchen, designed with practicality in mind, boasts ample space for a dining table, making it a delightful hub for family meals and gatherings. Four of the bedrooms are conveniently located on the ground floor, ensuring easy access and flexibility for various living arrangements.

The property is situated in a central location, offering easy access to local amenities and transport links. A sizeable integral garage adds to the convenience, providing plentiful off-road parking for residents and guests alike. The generous rear garden is a true highlight, offering a private outdoor space for children to play or for hosting summer barbecues.

In excellent decorative order throughout, this chalet bungalow is ready for you to move in and make it your own. Whether you are looking for a spacious family home or a property with the potential for dual living, this residence on Roderick Avenue is a must-see. Don't miss the opportunity to explore all that this exceptional property has to offer.

Living/Dining Room

18'6 x 15'3 (5.64m x 4.65m)

Kitchen/Breakfast Room

13'7 x 11'2 (4.14m x 3.40m)

Bedroom

12'5 x 11'5 (3.78m x 3.48m)

Bedroom

11'3 x 9'9 (3.43m x 2.97m)

Bedroom

12' x 7'9 (3.66m x 2.36m)

Bedroom

12 x 7'8 (3.66m x 2.34m)

Bathroom/wc

Ensuite Shower Room/wc

First Floor

Bedroom

17'9 x 15'1 (5.41m x 4.60m)

Bedroom

12'5 x 8'7 (3.78m x 2.62m)

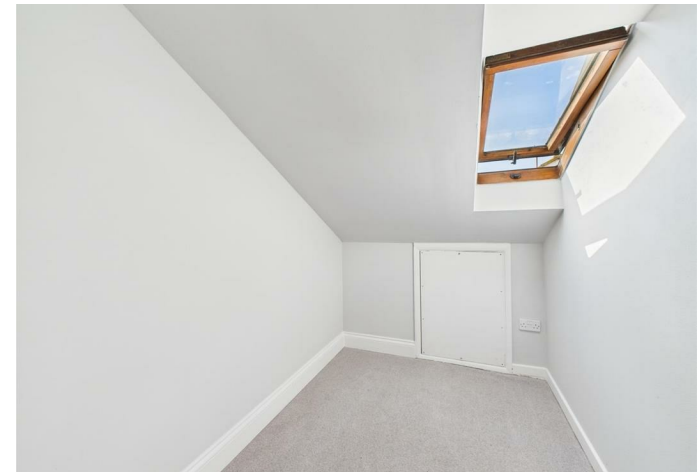
Bedroom

12'5 x 8'7 (3.78m x 2.62m)

Office/Study

8'5 x 5'9 (2.57m x 1.75m)

Bathroom/wc





Ground Floor

Approximate total area[®]

2134.83 ft²

198.33 m²

Reduced headroom

186.97 ft²

17.37 m²

(1) Excluding balconies and terraces

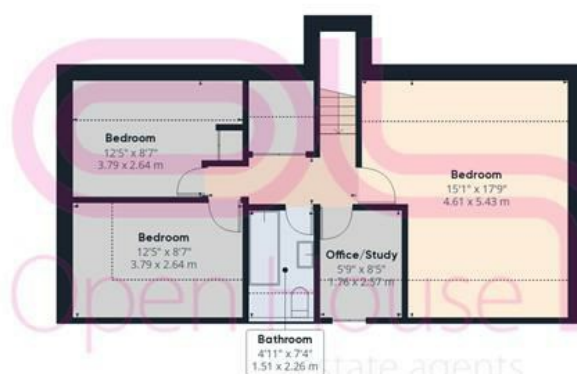
Reduced headroom

..... Below 5 ft/1.5 m

While every attempt has been made to ensure accuracy, all measurements are approximate, not to scale. This floor plan is for illustrative purposes only.

Calculations are based on RICS IPMS 3C standard.

GIRAFFE360



Floor 1