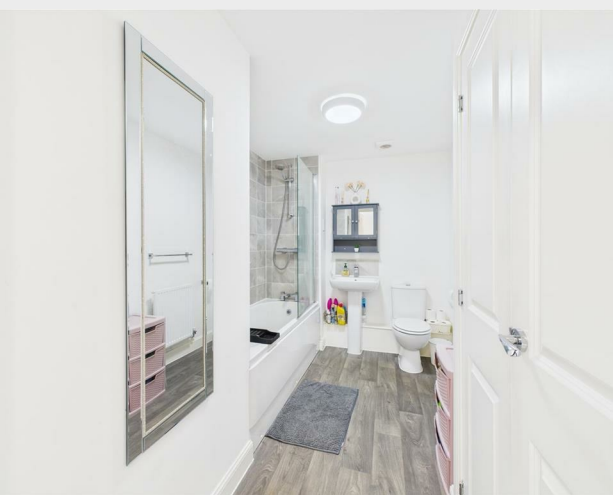
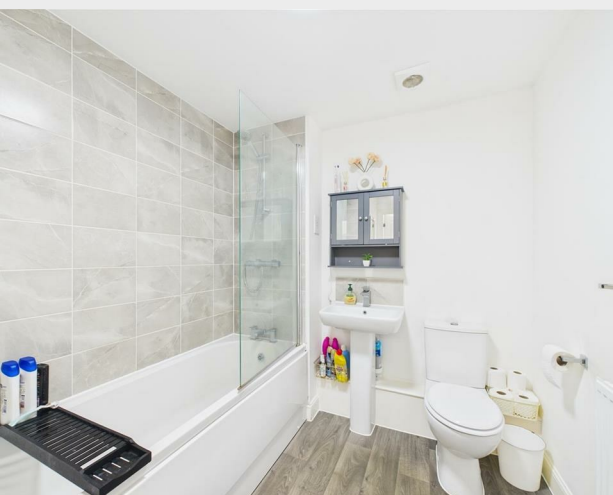


Flat 2, Robin Lane, Peacehaven, BN10 8GJ  
Leasehold  
Asking Price £219,950



NO CHAIN! Located on Robin Lane within the popular Chalkers Rise development, this nearly new ground floor flat offers a delightful blend of modern living and convenience. With one spacious bedroom and a well-appointed bathroom, this property is perfect for individuals or couples seeking a comfortable home.

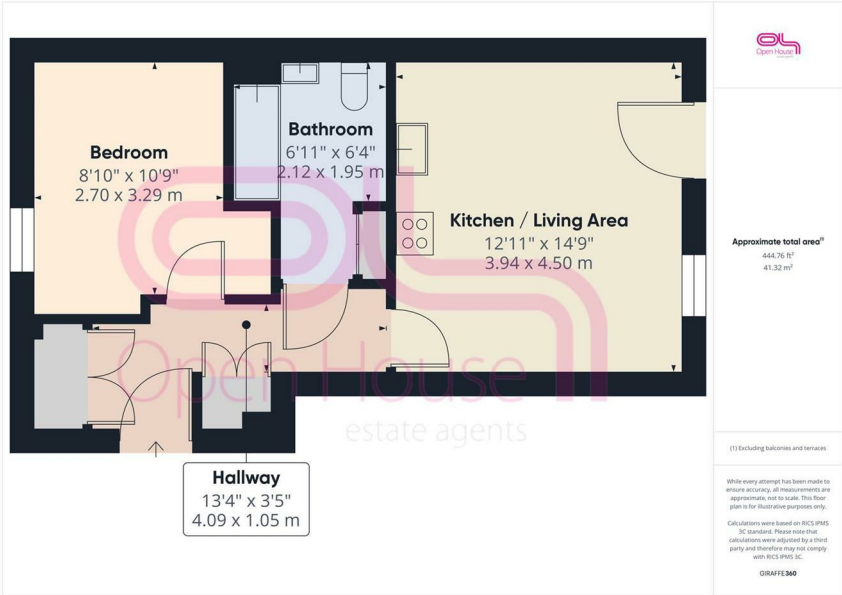
As you enter, you will appreciate the private entrance that leads you into an open plan kitchen and living room, creating a warm and inviting atmosphere. The living area is designed to maximise space and light, providing a perfect setting for relaxation. Furthermore, the property offers ample internal storage for stowing away your belongings.


The flat also boasts an allocated parking space, along with additional visitor bays, ensuring that parking is never a concern. The property comes with the reassurance of a remainder of the new home warranty, offering peace of mind for your investment.

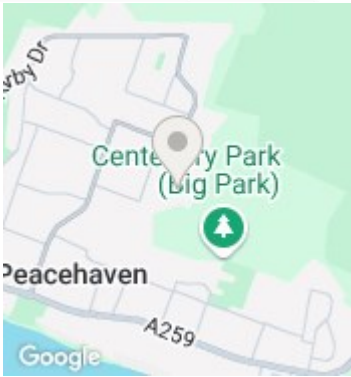
Situated conveniently close to transport links, residents can easily access the vibrant cities of Brighton and Eastbourne, making this location ideal for those who enjoy the hustle and bustle of city life while still appreciating the tranquillity of coastal living.

This modern flat on Robin Lane is a fantastic opportunity for anyone looking to embrace a contemporary lifestyle in a desirable area. Don't miss your chance to make this lovely property your new home.

- Bedroom**  
8'10" x 10'9" (2.7 x 3.29)
- Kitchen/Living Area**  
12'11" x 14'9" (3.94 x 4.5)
- Bathroom**  
6'11" x 6'4" (2.12 x 1.95)
- Hallway**  
13'5" x 3'5" (4.09 x 1.05)



Energy Efficiency Rating		
	Current	Potential
Very energy efficient - lower running costs		
(92 plus) <b>A</b>	<b>82</b>	<b>82</b>
(81-91) <b>B</b>		
(69-80) <b>C</b>		
(55-68) <b>D</b>		
(39-54) <b>E</b>		
(21-38) <b>F</b>		
(1-20) <b>G</b>		
Not energy efficient - higher running costs		
England & Wales		
EU Directive 2002/91/EC		
		



206 South Coast Road  
Peacehaven  
East Sussex  
BN10 8JP  
01273 830 987  
bnsales@localagent.co.uk

[www.openhousebrighton.co.uk](http://www.openhousebrighton.co.uk)