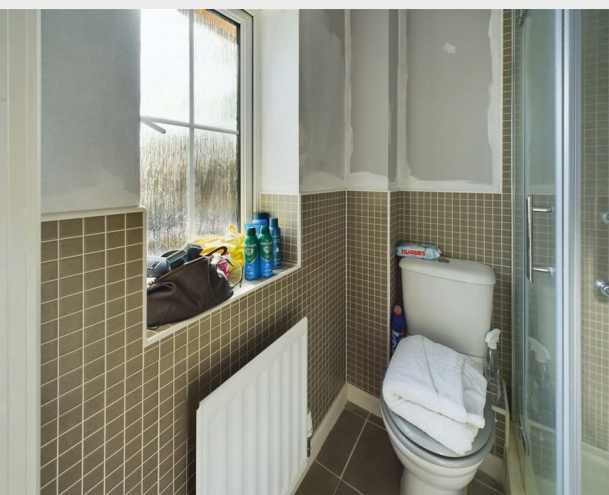


98 Westview Close, Peacehaven, BN10 8FB
Asking Price £305,000



Nestled in Westview Close of Peacehaven, this CHARMING two-bedroom (PREVIOUSLY THREE) end of terrace house is a gem waiting to be discovered. Boasting a SPACIOUS lounge/dining room, a LIGHT- FILLED kitchen/dining room, and two bathrooms, this property offers ample space for comfortable living.

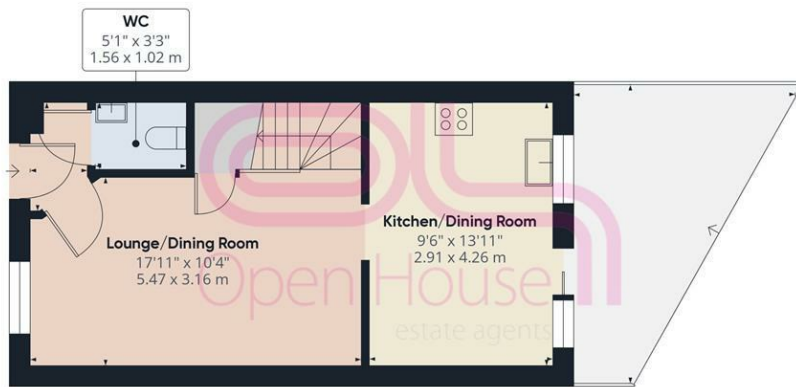
Situated in a peaceful close within a sought-after development, this home provides a tranquil retreat from the hustle and bustle of everyday life.

With the added convenience of a garage and being offered with no onward chain, this property presents a fantastic opportunity for those looking to make a house their own.

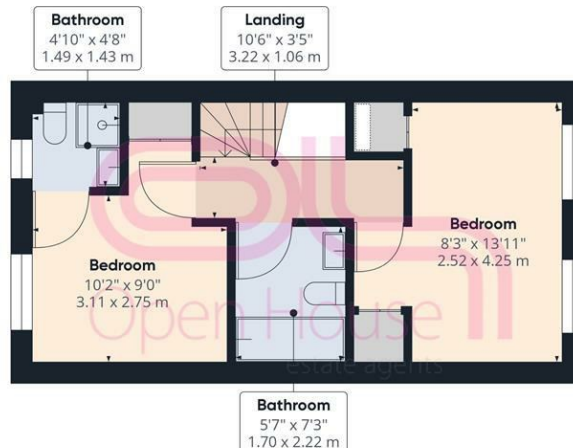
While a touch of redecoration is needed to restore its full potential as a cosy family abode, the possibilities are endless. Don't miss out on the chance to transform this house into your dream home in this desirable location.



206 South Coast Road
Peacehaven
East Sussex
BN10 8JP
01273 830 987
bnsales@localagent.co.uk



Ground Floor



Floor 1



Approximate total area[®]

730.12 ft²
67.83 m²

Balconies and terraces

128.95 ft²
11.98 m²

(1) Excluding balconies and terraces

While every attempt has been made to ensure accuracy, all measurements are approximate, not to scale. This floor plan is for illustrative purposes only.

Calculations are based on RICS IPMS 3C standard.

GIRAFFE360