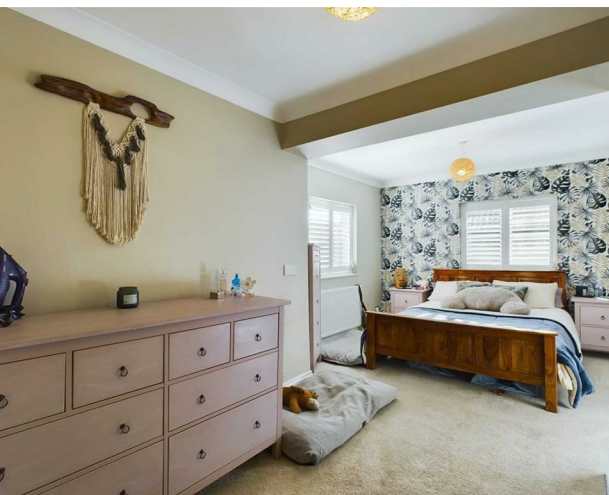


16 Coombe Vale, Saltdean, BN2 8HL
Offers Around £580,000



16 Coombe Vale, Saltdean, BN2 8HL

Offers Around £580,000

Council Tax Band: E

This SUPERB FAMILY HOME offers VERSATILE and SUBSTANTIAL accommodation throughout and is a real STAND OUT property. This coupled with the excellent location makes this a real must see.

An inviting and large entrance porch leads through to an impressive wide hallway, from here all principle rooms can be accessed. The large south facing lounge/dining room is a really light and bright room making it the perfect evening retreat. Close by is the beautiful kitchen/breakfast room which really offers the wow factor. Doors from here flood the room with sunlight due to its southerly aspect. Four bedrooms are present, all of which are excellent doubles and these are serviced by a quality family bathroom/wc. Furthermore the main bedroom also features its own dressing room and a luxurious en suite shower room/wc. Concluding the interior is an adaptable loft space which can be utilised in many ways such as an office space or a play room perhaps, the choice will be yours.

The 'Pièce de résistance' of this fantastic home is the large south facing rear garden and summer house, which is currently being used as a hair salon, but could very easily be an annexe or guest house for visiting family.

Lounge

19'4" x 10'10" (5.89 x 3.30)

Dining Room

9'10" x 8'2" (3.00 x 2.49)

Bedroom One

10'8" x 9'7" (3.25 x 2.92)

Dressing Area 7'10 x 9'3

Ensuite Shower Room/wc

7'9" x 5'8" (2.36 x 1.73)

Bedroom Two

11'11" x 11'4" (3.63 x 3.45)

Bedroom Three

11'2" x 10'5" (3.40 x 3.17 (3.18))

Bedroom Four

16'3" x 7'4" (4.95 x 2.24)

Family Bathroom

8'2" x 5'8" (2.49 x 1.73)

Summer House

22'7" x 14'5" (6.88 x 4.39)

Suumer House interior









206 South Coast Road
Peacehaven
East Sussex
BN10 8JP
01273 830 987
bnsales@localagent.co.uk

