



Colquhoun Street
Helensburgh
G84 8UP

2 
1 
1 

Offers Over £88,000

A bright and well proportioned Ground Floor Flat in a most convenient and central location within walking distance of the town centre.

The development is finished with a low maintenance render and fyfestone exterior beneath a natural slate roof and has wide communal entrance with stairs leading to all levels.



Internally the apartment comprises hallway with two useful storage cupboards, large main lounge/living room with picture window to the front providing attractive views, the kitchen has modern units and is a perfect size with attractive private outlook onto lawned communal drying green.



Home Report Valuation
£90,000

www.packdetails.com
Reference: HP652190
Postcode: G84 8UP

Council Tax Band B

EPC Rating D



There are two double bedrooms and a modern wet room/shower room with electric shower, wash hand basin and w.c.

The property is heated with gas central heating and double glazed windows.

There is also a very useful lockable private cupboard immediately outside the flat which is ideal for storing bikes etc

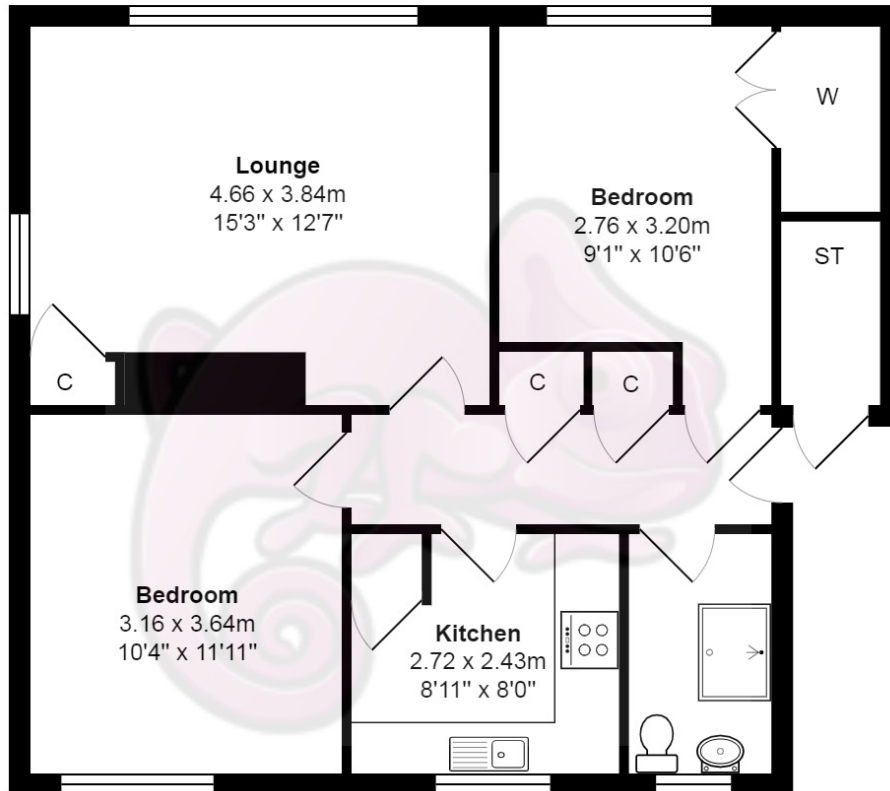


Parking is available outside the property on Colquhoun Street and this area is outwith the usual parking restrictions in the town centre.



Vendor Comments

Brilliant location so close to Colquhoun Square and the excellent local shops and amenities which are only a few hundred yards from the property.



All measurements are approximate and for display purposes only
 Total Area: 61.3 m² ... 659 ft²

Location

The flat is within 500 yards of Colquhoun Square and is therefore ideal for all the amenities including variety of shops, coffes shops, bar and restaurants. There is a co-op and Tesco within walking distance and the excellent nearby Morrisons is only a short drive away. Helensburgh train station is also close by and has regular





www.propertybureau.co.uk

Glasgow Stirling **Helensburgh** Lanarkshire

9 Colquhoun Street, Helensburgh, Dunbartonshire, G84 8AN

enquiries@propertybureau.co.uk
01436 674537

Whilst this brochure has been prepared with care, it is not a report on the condition of the property. Its terms are not warranted and do not constitute an offer to sell. All area and room measurements are approximate only. Floorplans may not be to scale.

