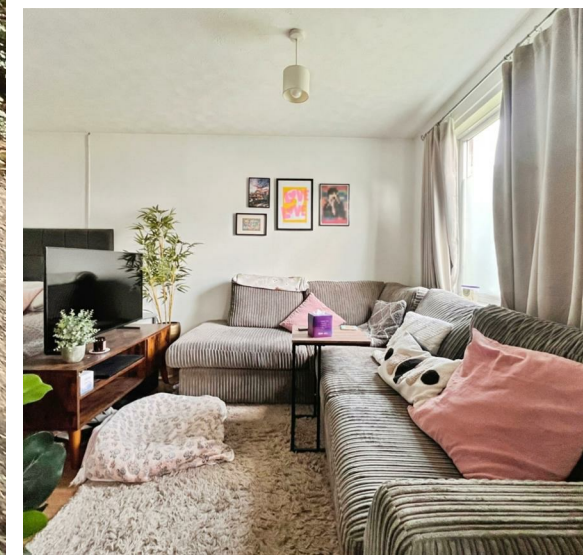


**Silecroft Court, Singleton, Ashford, Kent**  
**Asking price: Offers In The**







Located in the charming area of Lakemead, Ashford, this delightful studio apartment offers a perfect blend of comfort and convenience. Ideal for individuals or couples seeking a cosy living space, the property features a well-designed layout that maximises every inch of its accommodation.

Upon entering, you are greeted by a welcoming reception room that serves as the heart of the home. This versatile space can be tailored to suit your lifestyle, whether you prefer a relaxing lounge area or a functional workspace with bedroom area within. The studio design ensures that the living area flows seamlessly into the sleeping quarters, creating an inviting atmosphere that is both practical and stylish. From here, you'll find access into the homes kitchen, with fitted with wall & base units and space for free standing appliances. The bathroom is thoughtfully appointed, providing all the necessary amenities for your daily routine. With its modern fixtures and clean lines, it offers a refreshing retreat after a long day.



Located in the desirable Lakemead area, this property benefits from excellent transport links and local amenities, making it an ideal choice for those who appreciate both tranquillity and accessibility. Whether you are a first-time buyer or looking to downsize, this studio apartment presents a wonderful opportunity to own a piece of Ashford.



**Lease details: Service charge: £0.00 - Ground rent: £70.00 - Lease length: 956 yrs remaining.**

In summary, this studio in Lakemead is a charming and functional space that promises a comfortable lifestyle in a sought-after location. Do not miss the chance to make this delightful property your new home.

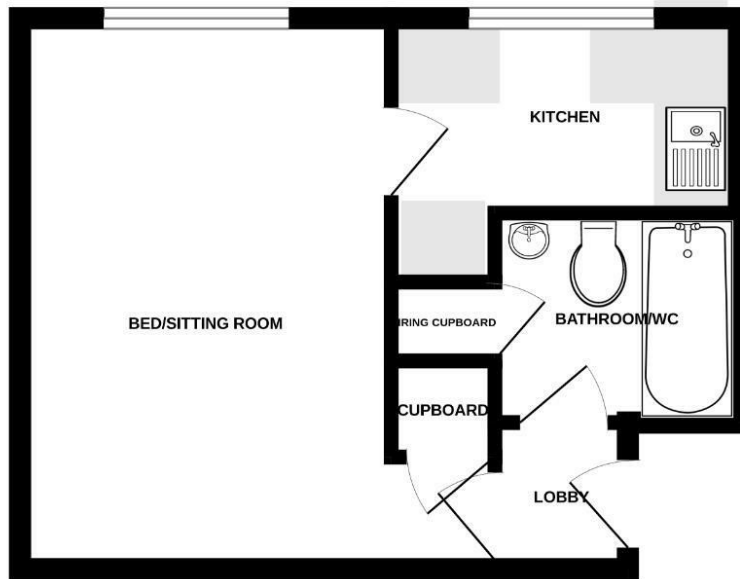








## GROUND FLOOR



Whilst every attempt has been made to ensure the accuracy of the floorplan contained here, measurements of doors, windows, rooms and any other items are approximate and no responsibility is taken for any error, omission or mis-statement. This plan is for illustrative purposes only and should be used as such by any prospective purchaser. The services, systems and appliances shown have not been tested and no guarantee as to their operability or efficiency can be given.  
Made with Metropix ©2025

### Viewings

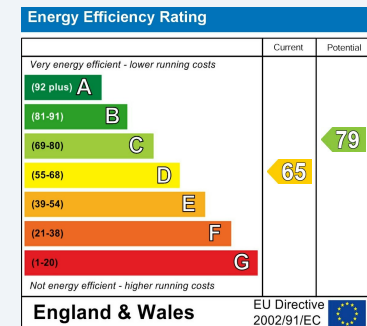
Please contact [ashford@hunters.com](mailto:ashford@hunters.com), if you wish to arrange a viewing appointment for this property or require further information.

### Valuations

For a valuation of your property, please email the team with your property details, contact information and the times you are available.

## ENERGY PERFORMANCE CERTIFICATE

The energy efficiency rating is a measure of the overall efficacy of a home. The higher the rating the more energy efficient the home is and the lower the fuel bills will be.



These particulars are intended to give a fair and reliable description of the property but no responsibility for any inaccuracy or error can be accepted and do not constitute an offer or contract. We have not tested any services or appliances (including central heating if fitted) referred to in these particulars and the purchasers are advised to satisfy themselves as to the working order and condition. If a property is unoccupied at any time there may be reconnection charges for any switched off/disconnected or drained services or appliances - All measurements are approximate.

**THINKING OF SELLING?** If you are thinking of selling your home or just curious to discover the value of your property, Hunters would be pleased to provide free, no obligation sales and marketing advice. Even if your home is outside the area covered by our local offices we can arrange a Market Appraisal through our national network of Hunters estate agents.