



Elcarim, 49 Main Road, Littleton, Hampshire SO22 6QJ
Guide Price £600,000 Freehold



Littleton, Winchester, SO22 6QJ

3 Bedrooms, 1 Bathroom

Guide Price £600,000

- Attractive detached bungalow in heart of the village
- Well fitted kitchen/breakfast room with side door to garden
- Spacious sitting room/dining room with door to garden
- Welcoming hallway with large linen and coats cupboards
- Three bedrooms
- Family bathroom
- Set within its gardens with garage and parking
- In catchment for Sparsholt CofE Primary School, and Westgate and Henry Beaufort Schools
- *In need of some modernisation and updating*
- Council Tax Band E, EPC Band D



ELCARIM, 49 MAIN ROAD, LITTLETON

Attractive and individual detached bungalow set in the heart of the village with garage and parking and surrounded by gardens. It has been lived in by the current owners since it was designed and built approximately forty years ago and would now benefit from some modernisation and updating.

A wide and welcoming hallway leads to all main rooms, and has large built in linen and coats cupboards. The spacious sitting room/dining room has a feature fireplace, large windows and a door to the garden. There is a well fitted kitchen/breakfast room, with wide window overlooking the front of the property. There are three double bedrooms and a family bathroom.

Set back from the village street by the front garden and parking, the property sits almost centrally within its plot which has clearly been much loved over the years. The rear and side gardens are mainly south and westerly facing, and feature a paved terrace leading onto the secluded lawned areas. To the front, there is a charming yew tree set within a deep flower bed, with garage and driveway parking to the side.

The property has mains water, gas and electricity, and private drainage via Klargestor septic tank and soakaway. It falls within catchment for Sparsholt CE Primary School and both Westgate and Henry Beaufort Senior Schools.

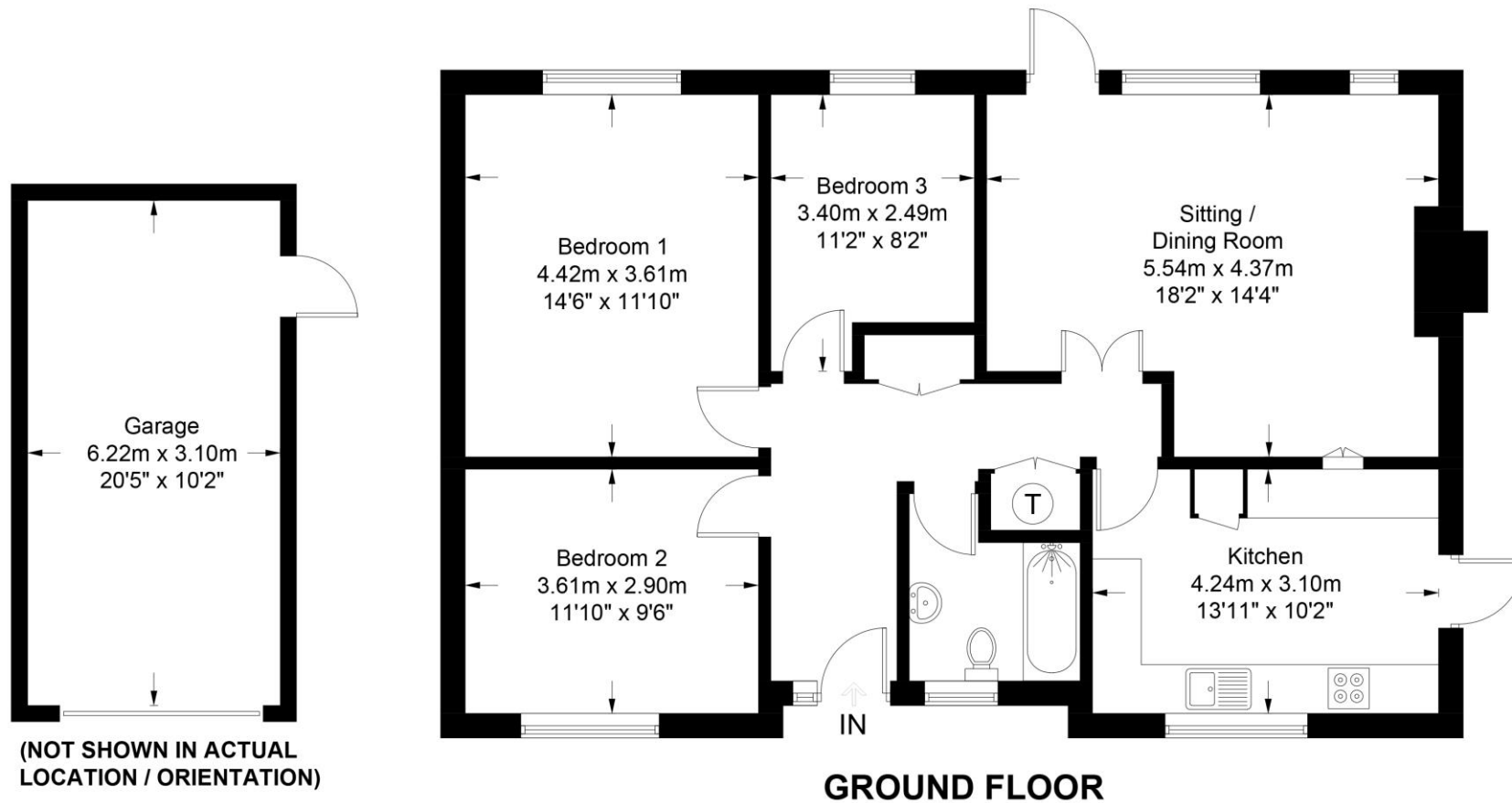
ADDITIONAL INFORMATION: Littleton is a much loved village dating from the Bronze age. It is just outside of the City of Winchester, and features a recently modernised pub, The Running Horse. There is the beautiful St Catherine's Church, and many clubs and societies within the village including sports clubs for cricket, croquet, football and tennis, the Littleton Players amateur dramatics society, gardening and art clubs, Brownies, Guides, Scouts and Cubs groups and many more, often centred around the much enjoyed Millennium village hall.







Approximate Gross Internal Area = 89.6 sq m / 964 sq ft
Garage = 19.2 sq m / 207 sq ft
Total = 108.8 sq m / 1171 sq ft



These plans are for representation purposes only as defined by RICS - Code of Measuring Practice. Not to Scale.
Created by Emzo Marketing (ID1059864)

MAC NKS

4 Romsey Road • Winchester • SO23 8TP
T: 01962 843346 • E: winchester@martinco.com

01962 843346
<http://www.martinco.com>

MARTIN&CO

Accuracy: References to the Tenure of a Property are based on information supplied by the Seller. The Agent has not had sight of the title documents. A Buyer is advised to obtain verification from their Solicitor. Items shown in photographs including but not limited to carpets, fixtures and fittings are not included unless specifically mentioned within the sales particulars. They may however be available by separate negotiation. Buyers must check the availability of any property and make an appointment to view before embarking on any journey to see a property. No person in the employment of the agent has any authority to make any representation about the property, and accordingly any information given is entirely without responsibility on the part of the agents, sellers(s) or lessors(s). Any property particulars are not an offer or contract, nor form part of one. **Sonic / Laser Tape:** Measurements taken using a sonic / laser tape measure may be subject to a small margin of error. **All Measurements:** All Measurements are Approximate. **Services Not tested:** The Agent has not tested any apparatus, equipment, fixtures and fittings or services and so cannot verify that they are in working order or fit for the purpose. A Buyer is advised to obtain verification from their Solicitor or Surveyor.