



188 Horton Road, Datchet, Berkshire, SL3 9HL
£265,000

 **HORLER**

188 Horton Road, Datchet, Berkshire, SL3 9HL

Offered to the market is this well presented, recently renovated one bedroom freehold house with a private garden and a garage in block. The property comprises of a lounge through dining room, refitted bathroom and kitchen suites and fitted out loft space all carried out by the current owners. The property is located close to great amenities, transport links and close to motorway accesses.



Entrance:

Through an UPVC front door into:

Lounge through dining room:

A delightful room with a window over the front aspect, laminate wood flooring, under stairs cupboard, TV, power and telephone points. Opening into:

Kitchen:

A refitted kitchen with a range of eye and base level white gloss units with a complimentary work surface, inset sink with drainer, integral oven with induction hob and extractor fan above, space for freestanding appliances including fridge/ freezer and washing machine, window over the front aspect, wood effect flooring, tile and glass splash backs.

Stairs leading to first floor landing:

Storage cupboard with the hot water cylinder. Doors into:

Bedroom:

A great sized double bedroom with ample space for freestanding furniture, window over the front aspect, loft access with pull down wooden ladder, power and TV points.

Bathroom:

A refitted bathroom comprising of a three piece white suite including a panel enclosed bath with shower and glass screen above, pedestal wash hand basin, low level W.C, chrome heater towel rail, tile effect vinyl flooring and partly tiled walls, frosted window over the front aspect and extractor fan.

Front garden:

Being bush enclosed this private garden is mainly laid to lawn with a paved path leading to the front entrance and flowerbed borders.

Garage:

A single garage with an up and over door located at the rear of the property.

Legal note:

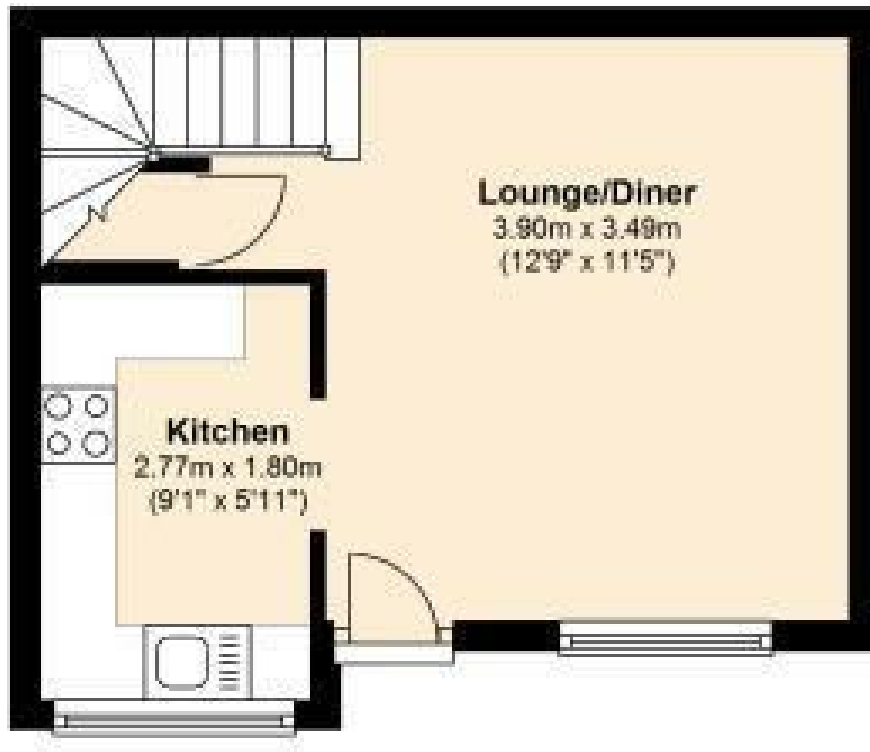
****Although these particulars are thought to be materially correct, their accuracy cannot be guaranteed and they do not form part of any contract.****





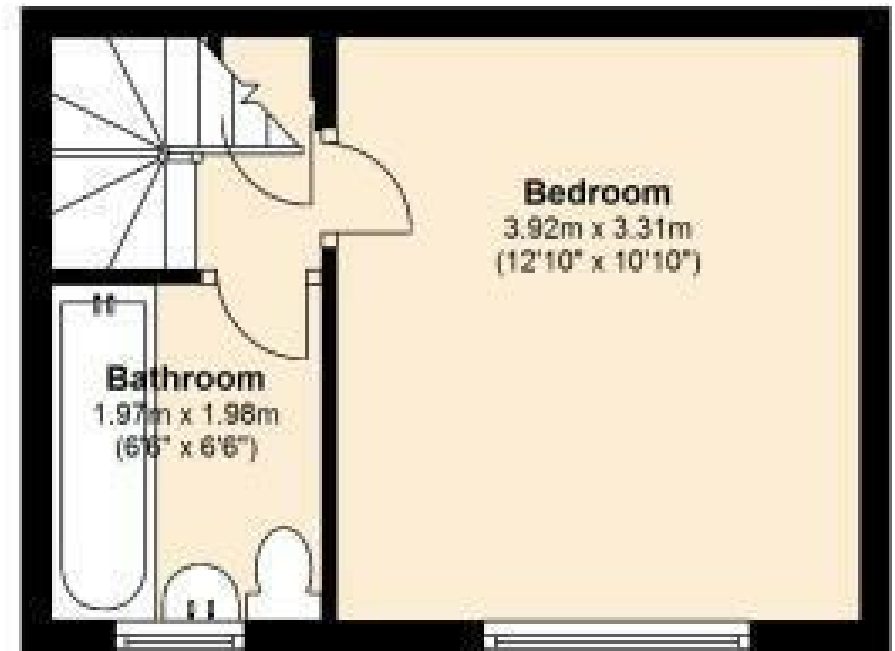
Ground Floor

Approx. 21.9 sq. metres (236.2 sq. feet)



First Floor

Approx. 20.2 sq. metres (217.9 sq. feet)



Total area approx. 41.9 sq. metres (449.5 sq. feet)

SALES
242 Dedworth Rd
Windsor
Berkshire
SL4 4JR

Tel: 01753 621234
Email: post@horler.co.uk

SALES
1 Temple Cottage
The Green
Datchet, Berkshire
SL3 9BJ

Tel: 01753 546667
Email: mail@stephenuren.co.uk