



Flat 4 61 Newbridge Crescent, Wolverhampton, WV6 £600



*One bedroom first floor fully furnished flat to a high standard.

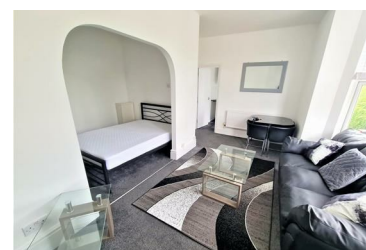
*Available straight away.

*Fresh Carpets & Decor Throughout.

*Fitted kitchen with white goods.

*Spacious lounge with all furniture provided.

- Gas Central Heating Included Winter Months
- Fully Furnished Only
- Spacious Lounge/ Dining
- Bathroom With Shower and W.C.
- Next to Wolverhampton Tennis & Squash Club
- Off Road Parking Available
- Double Bed And Mattress Included
- Available Immediately
- Great Transport Links
- Minimum 12 Month Tenancy



102 Compton Road, Wolverhampton, WV3 9PU

Tel: Tel. 01902 773944 Email: Email. info@rent-me-now.co.uk Web. www.rent-me-now.co.uk