



Terry Road

, Coventry, CV1 2AW

£3,450 PCM

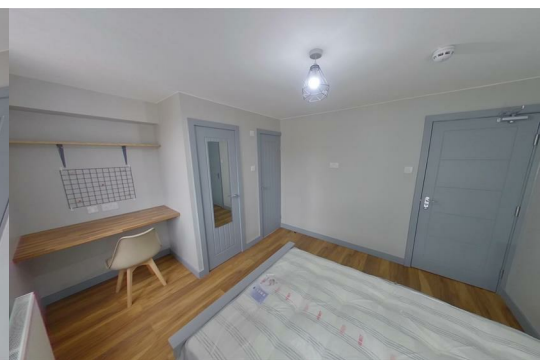
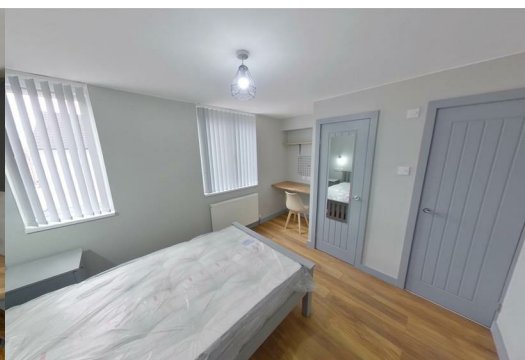


Pointons are proud to offer this five bedroom mid terrace property within a close proximity to Coventry University.

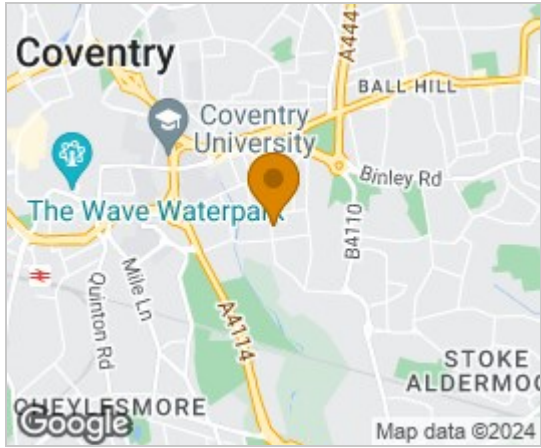
In brief the property comprises of an entrance hallway, a ground floor W/C, en-suite bedroom, a communal lounge/kitchen/diner with an integrated five ring electric hob and oven and two freestanding fridge/freezer.

Each fully furnished room features a bed, wardrobe, desk, wall mounted TV and private tiled bathroom fitted with a shower cubical and white suite. Externally the property offers a court yard garden to the rear.

An internal inspection is strongly recommended and viewings are by prior appointment via the agents.



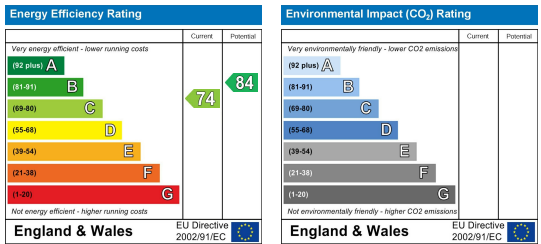
Area Map



Floor Plans



Energy Efficiency Graph



These particulars, whilst believed to be accurate are set out as a general outline only for guidance and do not constitute any part of an offer or contract. Intending purchasers should not rely on them as statements of representation of fact, but must satisfy themselves by inspection or otherwise as to their accuracy. No person in this firm's employment has the authority to make or give any representation or warranty in respect of the property.

109 NEW UNION STREET
COVENTRY, CV1 2NT
 coventry@pointons-group.com
024 7710 333
 Company No: 7359350

BOND GATE CHAMBERS
 NUNEATON, CV11 4AL
 nuneaton@pointons-group.com
024 7637 3300
 Company No: 6743033

74 LONG STREET
ATHERSTONE, CV9 1AU
 atherstone@pointons-group.com
 01827 711911
 Company No: 81323250



www.pointons-group.com

VAT NO 742186125