



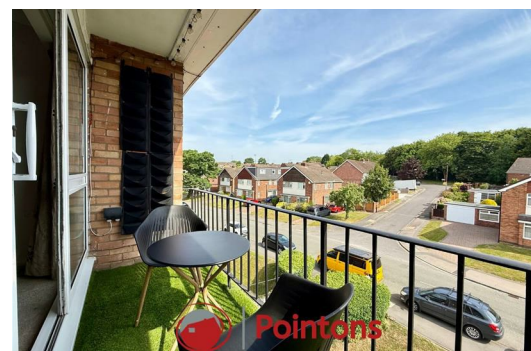
Nod Rise, Coventry CV5 7JN Asking Price £175,000

Pointons estate agent are pleased to offer for sale. This charming two-bedroom flat at Cartmell Court, located in the sought-after location of mount Nod on Nod Rise. The property offers a fantastic opportunity for modern living with the added benefit of local amenities with in a 5 minute walk from the apartment

The large lounge/dining room is a highlight, offering plenty of room for relaxation and entertaining. The room boasts patio doors that open out onto a generous balcony, providing beautiful views of the well-maintained communal gardens.

The flat features a modern three piece suite bathroom with a bath and shower over, The kitchen is a great size, offering ample space for all your appliances and providing a fantastic area for cooking and modern living. It's a spacious, square-shaped room. The property features two spacious bedrooms, both with built-in wardrobes.

Other features include double glazing throughout and electric heating. The property comes with allocated parking and a garage, which can be used for storage or parking a car.



Entrance Hall

8'4" x 4'4" (2.55m x 1.33m)

Main entrance into the apartment, storage cupboard with sliding door, telephone intercom, doors to:

Lounge

12'0" x 17'9" (3.65m x 5.41m)

Tv and internet ports, coving to ceiling, feature electric fan fire, sliding door to balcony, doors too:

Kitchen

8'4" x 9'7" (2.55m x 2.91m)

Fitted with matching base and eye level units, worktop with 1 & 1/2 stainless steel sink with drainer and mixer tap, integrated electric oven/hob and extractor fan, plumbing for washing machine, space for fridge and freezer, window to front, tiling to all walls above worktop.

Bedroom 1

11'8" x 10'8" (3.55m x 3.26m)

Window to rear, integrated wardrobe's

Bedroom 2

11'8" x 7'5" (3.55m x 2.25m)

Window to rear, integrated wardrobe's

Bathroom

8'4" x 5'8" (2.55m x 1.72m)

Fitted with a three piece suite comprising of; a deep panelled bath with electric shower and screen, close coupled w/c, pedestal hand wash basin, tiling to all walls and floor, window and radiator to side.

Lease & service information

Leasehold flat with 939 years remaining on the lease

Ground Rent: £0 per year

Service Charge: £110 per month (includes window cleaning, gardening, and building insurance)

Good to Know

Selling Position: No Chain

Age of the Property: 1960-1970

Approx. Total Floor Area: 688.90SqFt

Heating System: Electric

Type of Windows: UPVC

Fuse Box Location: Hallway

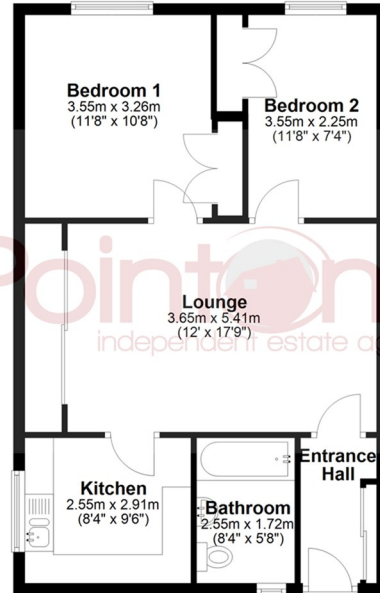
Council Tax Band: B

Energy Performance Certificate Rating: C

Disclaimer

Please Note: All fixtures & Fittings are excluded unless detailed in these particulars. None of the equipment mentioned in these particulars has been tested; purchasers should ensure the working order and general condition of any such items.

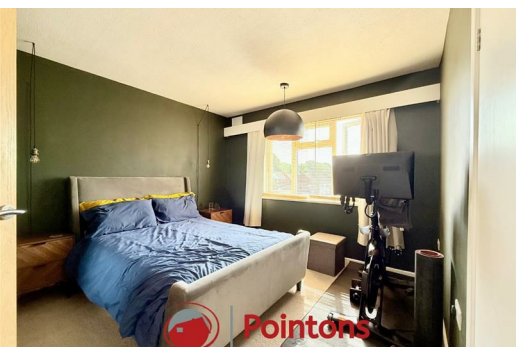
Ground Floor



All floor plans are for a guide of the layout and not to scale
Plan produced using PlanUp.

Energy Efficiency Rating	
Current	Potential
Very energy efficient - lower running costs	
(92 plus) A	
(81-91) B	
(69-80) C	
(55-68) D	
(39-54) E	
(21-38) F	
(1-20) G	
Not energy efficient - higher running costs	
England & Wales	
EU Directive 2002/91/EC	

Environmental Impact (CO ₂) Rating	
Current	Potential
Very environmentally friendly - lower CO ₂ emissions	
(92 plus) A	
(81-91) B	
(69-80) C	
(55-68) D	
(39-54) E	
(21-38) F	
(1-20) G	
Not environmentally friendly - higher CO ₂ emissions	
England & Wales	
EU Directive 2002/91/EC	



WWW.POINTONS-GROUP.COM

2 Bond Gate Chambers
NUNEATON
CV11 4AL
024 7637 3300
nuneaton@pointons-group.com

109 New Union Street
COVENTRY
CV1 2NT
024 7663 3221
coventry@pointons-group.com

74 Long Street
ATHERSTONE
CV9 1AU
01827 711911
atherstone@pointons-group.com

