



**Church Mews Bennetts Road, Keresley End  
Coventry CV7 8QD  
Guide Price £375,000**

Pointons Estate Agents are pleased to offer this well presented, extended, modern detached family home located in a popular location with views over countryside to the rear. The property benefits from gas central heating with traditional cast iron radiators and newly fitted double glazing. The accommodation comprises entrance hall, extended lounge / dining room, fitted kitchen with some appliances built in, separate utility room and guest cloakroom. To the first floor there is are three bedrooms, master having en-suite shower room and family bathroom.

Outside is a garden to the rear, parking for three cars and garage store. An internal inspection is strongly recommended to appreciate the size and quality of accommodation on offer and are by strict appointment via the agent.



### Entrance Hall

Radiator, ceramic tiled flooring, stair leading to first floor landing with spindles and under stairs cupboard (accessed from the lounge area) and doors to:

### Kitchen

16'9" x 8'10" (5.10m x 2.70m)

A bespoke fitted kitchen with granite worktops and a matching range of base and eye level units with worktop space over, sink unit with single drainer and mixer tap, concealed under-unit lights, built-in fridge/freezer, plumbing for dishwasher, built-in electric fan assisted double oven, five ring gas hob with extractor hood over, double glazed window to front, radiator, ceramic tiled flooring, part glazed door to side.

### Utility

7'9" x 8'7" (2.35m x 2.62m)

Fitted base units, stainless steel sink unit with single drainer and mixer tap with tiled splashbacks, plumbing for washing machine, space for fridge and tumble dryer, ceramic tiled flooring, part glazed door to side.

### WC

Fitted with two piece suite comprising, vanity wash unit with cupboard under and tiled splashbacks, low-level WC and extractor fan, radiator, ceramic tiled flooring.:

### Lounge Area

11'8" x 21'8" (3.55m x 6.60m)

Double glazed window to rear, fireplace with wood burner having a glass door, two radiators, telephone point, opening into:

### Dining Area

12'7" x 12'5" (3.84m x 3.78m)

Two double glazed windows to rear, two double glazed windows to side, double glazed skylights/velux windows, radiator, hard wood flooring, wall light points, vaulted ceiling with exposed beams, double glazed French double doors to garden.

### Landing

Double glazed window to side, access to loft space being part boarded with pull down ladder and doors to.

### Master Bedroom

11'4" x 21'8" plus wardrobes (3.47m x 6.61m plus wardrobes)

Two double glazed windows to rear, radiators, double doors to built in wardrobes with hanging rails and shelving, door to:

### En-suite

Fitted with three piece suite comprising vanity wash unit with cupboard and drawers, tiled shower enclosure and close coupled WC, tiling to all walls, heated towel rail, extractor fan, shaver point, obscure double glazed window to side.

### Bedroom 2

9'10" x 10'7" (2.99m x 3.22m)

Double glazed window to front and radiator

### Bedroom 3

9'10" x 10'6" (2.99m x 3.19m)

Double glazed window to front and radiator

### Bathroom

Fitted with three piece suite comprising panelled bath with shower over and glass screen, pedestal wash hand basin and low-level WC, tiled splashbacks, tiling to all walls, extractor fan, shaver point, obscure double glazed window to side, heated towel rail,

### Garage Store

Accessed via double wooden doors, wall mounted combination boiler serving central heating and domestic hot water.

### Outside

To the rear is a decked patio area with spindles, low maintenance garden being mainly laid to slate with feature paved patio, shrub borders and garden shed, a large log store and 15 x 20 ft roofed area to bottom of garden with views over farmland. Pedestrian access to both sides leading to the front where there is a driveway providing off road parking and a further lawn area.

### Disclaimer

Please Note: All fixtures & Fittings are excluded unless detailed in these particulars. None of the equipment mentioned in these particulars has been tested; purchasers should ensure the working order and general condition of any such items.

### Good to know

Tenure: Freehold,

Council tax: D

Gas central heated

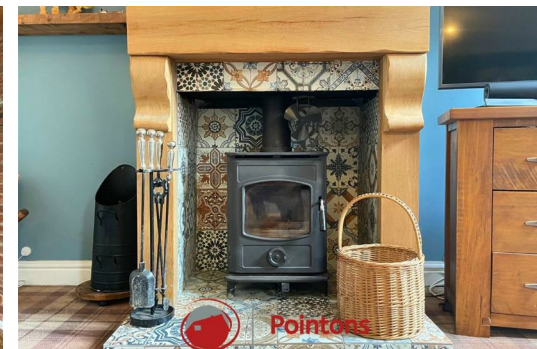
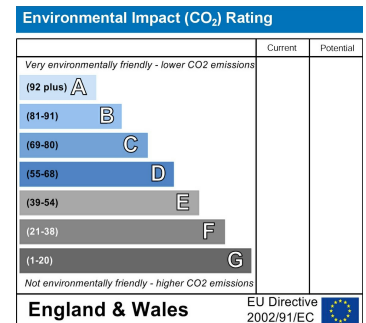
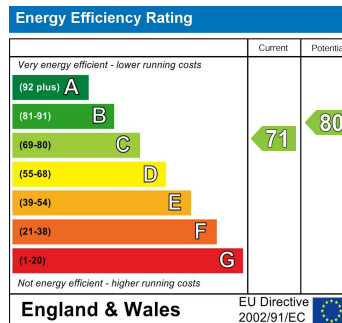
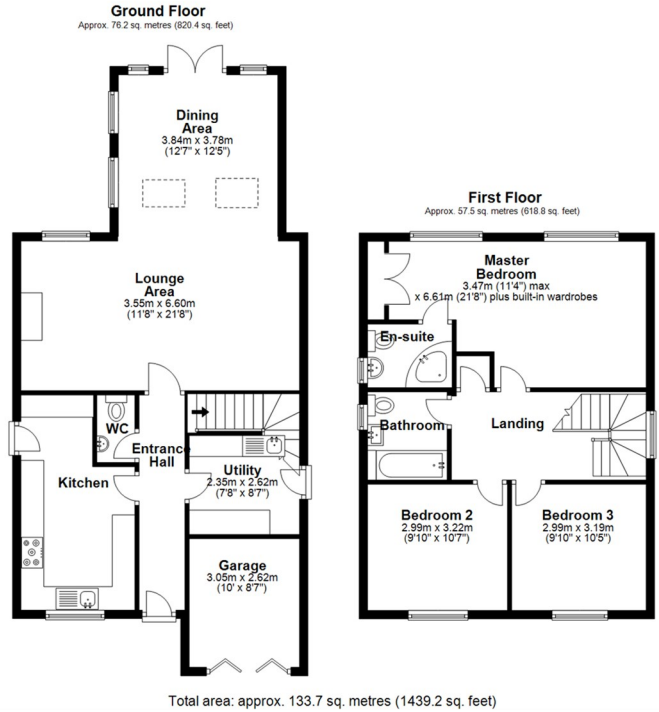
Vendors Position: Found upwards property

Floor area: 1439.2 Sqft

Energy Rating: C

Year built: 1991

Loft: Boarded with electrics



**WWW.POINTONS-GROUP.COM**

2 Bond Gate Chambers  
**NUNEATON**  
 CV11 4AL  
**024 7637 3300**  
 nuneaton@pointons-group.com

109 New Union Street  
**COVENTRY**  
 CV1 2NT  
**024 7663 3221**  
 coventry@pointons-group.com

74 Long Street  
**ATHERSTONE**  
 CV9 1AU  
**01827 711911**  
 atherstone@pointons-group.com

