

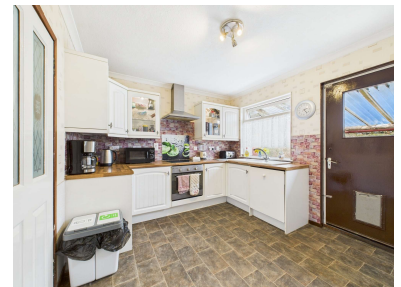
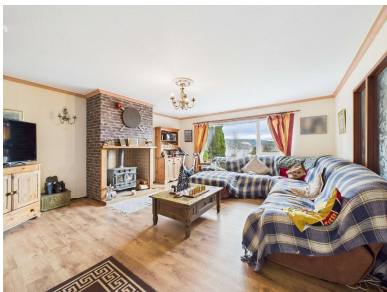


## 3 Bed Detached Bungalow

Guide Price: £295,000

Fascadale, Lochgair, by Lochgilphead, Argyll, PA31 8SD

Inviting and spacious family home set in a peaceful cul de sac of 4 similar dwellings with commanding elevated views towards Loch Fyne. 'Fascadale' signifies 'the valley of the ship' and the property is ideally located within the ever popular sailing village of Lochgair with boat launching slipway and shore access to Loch Gair nearby. Comprising; Lounge, dining room, kitchen, 3 double bedrooms (one en-suite) and family bathroom. Further benefits include a large wood burning stove, oil central heating, double glazing and ample storage throughout including loft storage space. Extensive gardens attracting an abundance of local wildlife, gated countryside access to the rear, patio/bbq area, private driveway, carport, garage/workshop, basement cellar with workbenches, timber shed, greenhouse and log store. Broadband, 4G and digital television are available. EPC rating D56 - Council Tax Band D



  
**ARGYLL**  
 Estate Agents



#### Entrance/hallway 4.41m x 1.53m

Timber entrance door to welcoming hallway with laminate flooring, coat hooks and space for hall furniture. Central heating radiator, loft hatch access, pendant lighting, smoke detector, socket points and storage cupboard.

#### Lounge 5.37m x 4.85m

Glazed doors from the hallway invite you to this large family room with views towards Loch Fyne in the distance. Central to the room is the focal point wood burning stove with tiled surround and hearth. Central heating radiator, laminate flooring, plenty of room for freestanding lounge furniture, feature pendant lighting, wall lighting, tv point and socket points.

#### Dining Room 3.60m x 3.48m

Semi open plan to the lounge with sliding opaque glazed doors for privacy if required. This room is currently utilised as a large home office with flexible use options. Garden and hillside views to the rear. Laminate flooring, central heating radiator, socket points and access to the adjacent family kitchen.

#### Kitchen 3.63m x 2.97m

Country style kitchen with lovely window views and access to the rear gardens and rural scenes beyond. Pantry cupboard and large storage cupboard. Matching wall and base units with glass display cabinets and bottle rack. Integrated Indesit dishwasher, space and plumbing for white goods, electric oven/grill and 4 zone hob with extractor hood above. Ceramic sink with mixer tap, wall paper coverings, decorative glazed cooker splashback, vinyl flooring and heat detector.

#### Bedroom One 4.29m x 3.71m

Large double bedroom with views to the front garden and partial loch views beyond. Carpeted flooring, pendant lighting, central heating radiator and socket points. Quadruple inbuilt wardrobes with sliding doors and plenty of room for bedroom furniture.

#### Bedroom Two 3.12m x 2.78m

Good sized double bedroom with en suite facilities, views to the rear garden and rural scenes beyond. Double inbuilt wardrobes, carpeted flooring, pendant lighting, central heating radiator and socket points. Ample space for bedroom furniture.

#### En suite 2.80m x 1.80m

Three piece suite with Triton electric shower, quadrant enclosure, WHB and WC, Wet wall panels and tiling to walls, vinyl flooring with timber effect pattern, wall mounted heater, opaque window, towel rail and extractor fan.

#### Bedroom Three 3.25m x 2.42m

Double bedroom with views to the front garden and partial loch views beyond. Carpeted flooring, pendant lighting, central heating radiator, socket points and ample room for bedroom furniture.

#### Bathroom 2.58m x 1.96m

Three piece suite with shower and screen over the bath, WHB with modern mixer tap, vanity storage below and WC. Opaque window to rear, tiled splashbacks to dado height, pendant lighting, wall mounted vanity unit, tile effect vinyl flooring and towel rail.

#### Outside area

Extensive wrap around gardens with various spaces to enjoy gardening, family fun and relaxation. A well stocked mature rear garden with lawn and shrub borders. To the front the private driveway with lawn banking leads to a stone chipped designated parking area next to garage/workshop and carport (currently used as log storage area). Lawns and natural areas welcoming wildlife and wild flowers to the front side and rear. Various borders ripe for planting, annual flowering shrubs and established trees define the borders of the gardens. There are gates to either side of the property giving access and security for children and pets in the rear gardens. Stone chipped patio/seating area with cover is ideal for sitting enjoying the rural views and sun. Slabbed bbq area with purpose built brick bbq enclosure. Drying green, greenhouse, outside tap and timber garden shed to rear. Directly from the rear garden there is a pathway leading onto well maintained forestry tracks to peaceful walks and commanding views of the local area.

#### Garage/Workshop 5.42m x 3.00m

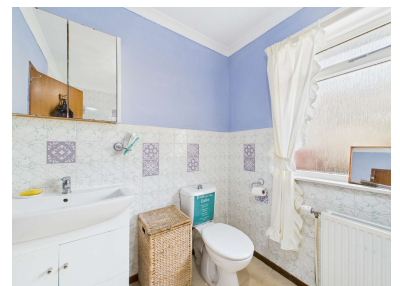
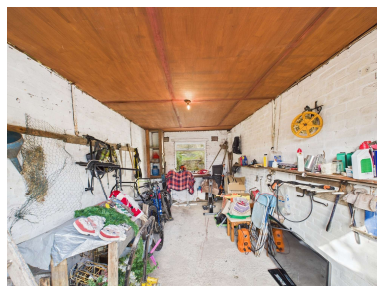
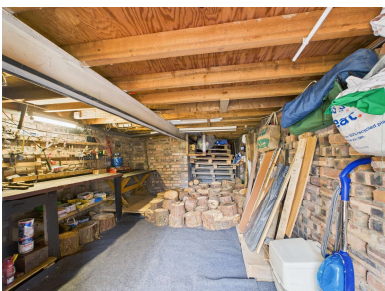
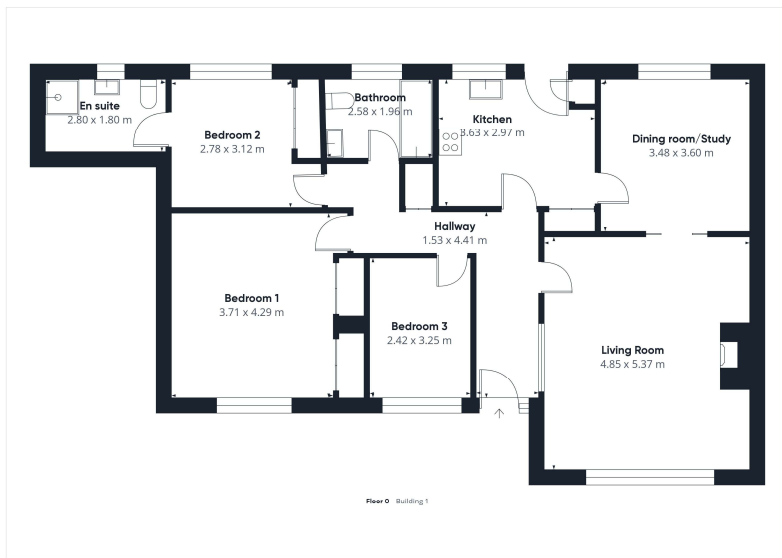
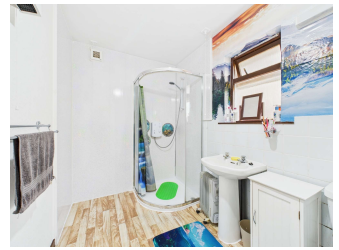
Single garage with work benches, power and light, concrete base and double doors.

#### Basement Cellar 5.8m x 4.3m

Large basement cellar with reasonable head height, power and light, concrete base, workbenches and further storage space. Hatch style door at side of property.

#### Location

Lochgair is an attractive and sheltered ribbon settlement of homes and Fasdale is within a few minutes walk to the pretty sheltered bay of Loch Gair and the local hotel. There are also many varied walking routes from the nearby forestry car parks. Lochgilphead is about 6 miles to the southwest and has a fine range of local shops, services and supermarkets which easily cater to everyday needs and fuller weekly shops. Lochgilphead has a health care centre as well as a library, a good range of professional services and is home to the Mid Argyll swimming pool. Primary and secondary schooling is available in Lochgilphead. The town also benefits from a newly re-vamped front green offering outdoor activities for all the family. Inveraray (16 miles) has an extensive range of popular tourist shops and a number of friendly local hotels, country pubs and restaurants. Oban is about 44 miles to the northwest where there are further larger shops and services, Glasgow City is about 78 miles to the southeast and offers a full range of higher and further education services as well as all the cultural and professional services normally connected with a major city. The A83 and A82 provide access to central Scotland. Arrochar has a mainline rail station with a service to and from Glasgow city centre and a sleeper service to London. The local area offers much in the way of outdoor pursuits including cycle routes, challenging hill climbs, walks and several golf courses. Sea, river and loch fishing is also available in the area as are a number of local events on throughout the year. For sailors, the sea lochs of the west of Scotland offer safe anchorages as well as spectacular coastal sailing; there are marina and chandlery services at Ardrishaig, Tarbert, south at Portavadie and in the northwest via the Crinan canal at Ardfert in Loch Craignish for easy western isles and north coast access. Citylink/West Coast Motors run a regular bus service from Campbeltown to Glasgow for those wishing to use public transport. The local bus stops connect all the villages and towns on this route 3 times per day.



At **Argyll Estate Agents** we pride ourselves on offering a professional proactive service to all of our customers. Whether you are buying or selling we are here to help you achieve the best possible results with the minimum of fuss. With years of sales experience, we have developed a modern approach to the property market with flexible working hours and a strong emphasis on technology. Combine this with a national online presence and our local knowledge then you have a winning formula. Thinking of selling your property? We will give you an honest and accurate summary of current market conditions and clearly explain the ins and outs of the Home Report. We will also inform you of what we at Argyll Estate Agents provide in the way of service to ensure your property is marketed professionally and effectively allowing you to realise the full market potential.

If you are thinking of buying or selling and are unsure of the process please feel free to give us a call to have a no obligation chat on how we can help you get started.

### What's included

Your property is displayed in our prominent High Street windows in Oban and Lochgilphead  
We advertise in all major property websites more than any other Agent in Argyll  
You only pay our sales fee from the proceeds of your sale on the day of completion  
Valuable local knowledge with all the services offered by a city based agent  
Wide-angle photography as standard  
Instruction and support completing your Home Report  
Agreeing on your proactive marketing strategy  
The production of property particulars and floorplan  
Regular email alerts tailored to motivated buyers on our extensive mailing list  
Unique property matching service with buyers from around the UK and abroad  
Social media posts on Facebook, Twitter, Instagram and Youtube  
Erection of a standard for sale board at your property  
All postage, stationary and telephone charges  
Liaising with both Solicitors through to sale completion

### Marketing upgrades available on request

Highly rated professional photographers as used by the big brands  
Licensed aerial photography (subject to location and weather)  
Qualified accompanied viewings carried out  
360 Virtual walk-through tours  
Hard copy glossy brochures (minimum quantity 30 copies)  
Local and National press advertising (at preferential rates)

We can match any product or service offered by any UK estate agent. Simply let us know your requirements and we will make arrangements with one of the many contacts we have in the industry.

---

#### Head Office:

20 Argyll Street, Lochgilphead  
Argyll PA31 8NE

**Lochgilphead area:** 01546 607045 / **Oban area:** 01631 561130

**Mobile:** 07771 541578 **Email:** [mail@argyllestateagents.com](mailto:mail@argyllestateagents.com)



We have prominent window displays in the main thoroughfares of both Lochgilphead and Oban. Our office is open by appointment Mon to Friday from 9am until 5pm. We can help with all aspects of property sales. We have local and National Solicitors, Mortgage Brokers and Surveyors ready to help offer you detailed quotations and give free impartial advice with no obligation to proceed. Why take the risk and pick a name off the internet or phonebook? Getting the right advice at the start can save you time and money in the long run. You do not need to buy your property through us for this service. It is free to everyone looking for a tried and trusted property professional. Simply complete the 'Contact Professionals' form on our website and we will pass on your details and requirements.