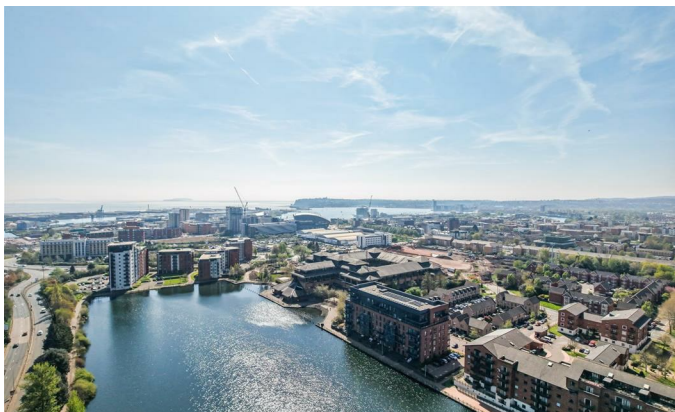




**Guide Price £240,000 , Schooner Wharf, Schooner Drive, Cardiff Bay CF10
4ET**



- Cardiff Bay Location
- Immaculately Presented
- Superb Water Views
- Walking Distance To Mermaid Quay and the City Centre
- Third Floor Two Double Bedroom Apartment
- EWS1 Form In Place
- Long lease with low service charges
- NHBC warranty cover for added reassurance



, Schooner Wharf, Schooner Drive,
Cardiff Bay, CF10 4ET

+++ Guide Price £240,000 - £250,000 +++

Situated within the recently developed Cardiff Bay area, this impeccably presented waterside apartment enjoys an ideal location just a short walk away from the excellent amenities of Mermaid Quay. Additionally, it offers quick and convenient access to Cardiff City Centre.

Nestled in the sought-after Schooner Wharf development is this beautifully maintained first-floor corner apartment . As you enter the property, you're greeted by an inviting entrance hall featuring built-in storage and airing cupboards.

The apartment boasts a bright and spacious open-plan kitchen, living, and dining area that overlooks the water allowing for a delightful view of the Bute East Dock waterplane. The kitchen is equipped with a range of base and eye-level units, along with integrated appliances like an electric oven, electric hob, extractor, and fridge freezer.

You'll find two generously sized double bedrooms, including a stunning Master Bedroom with its own chic ensuite shower room. The main bathroom is complete with a shower over a panel bath.

Further benefits include an allocated parking space, video entry intercom, an air filtration system and sprinkler and smoke detection system as well as electric heating.

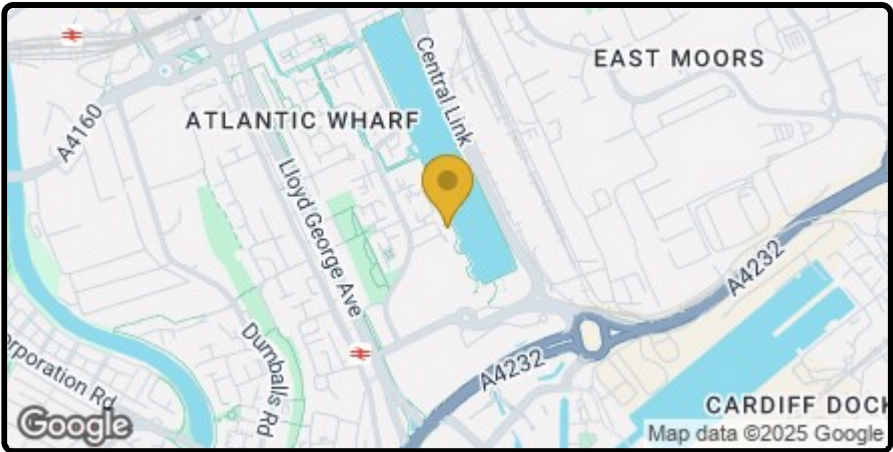
This opportunity should not be overlooked, so we strongly recommend contacting us today to schedule a viewing appointment.


Offered with No Onward Chain


Key Executive Sales

02920 489 000 | info@keyexecutivesales.co.uk |www.keylet.co.uk |117-120 Bute Street, Cardiff Bay, Cardiff, CF10 5AE
Cardiff Property Lettings T/A Key Executive Sales | Reg. No. 05294705 | VAT Reg. 851012863

   @keyexecutivesales

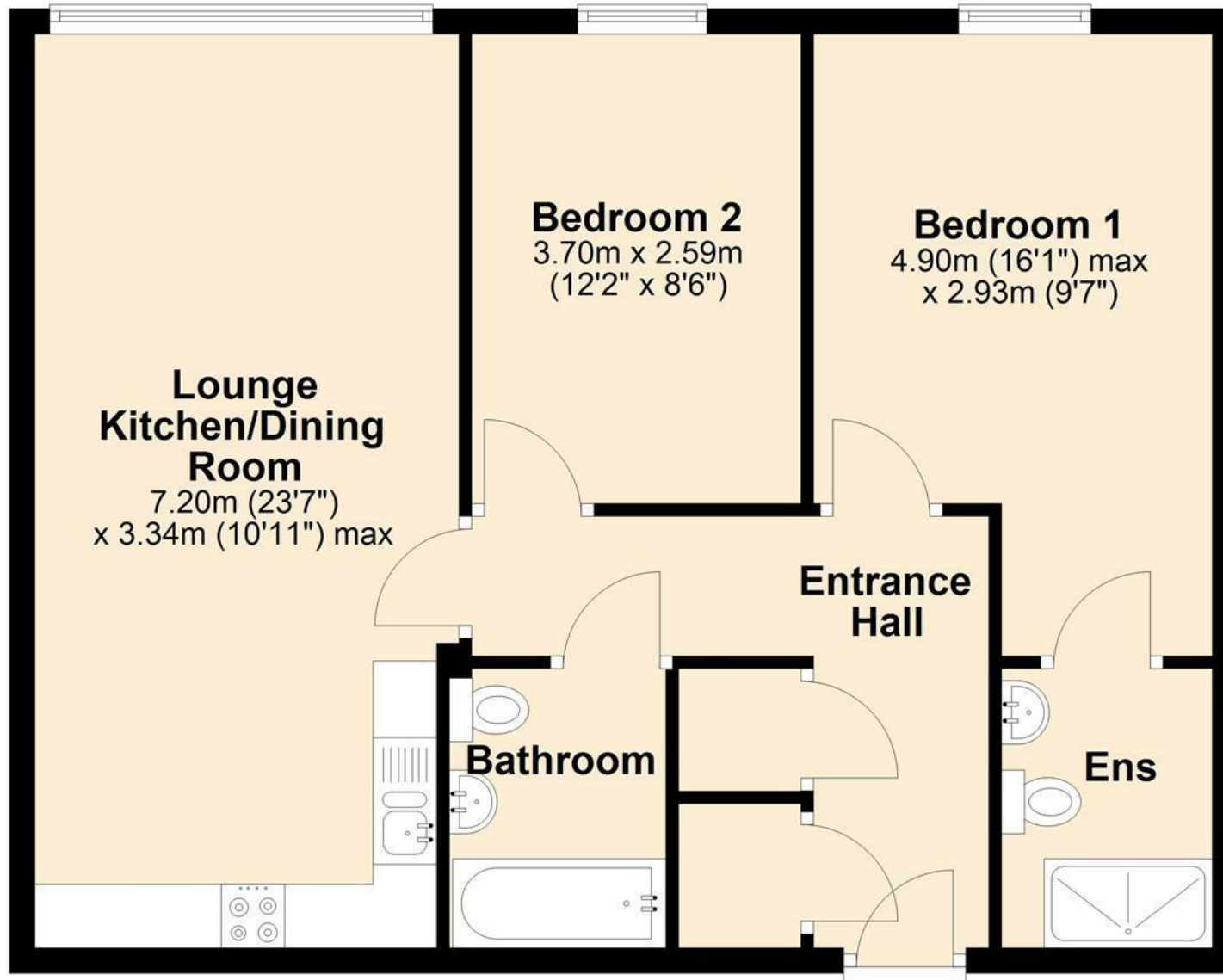


Energy Efficiency Rating		
	Current	Potential
Very energy efficient - lower running costs		
(92 plus) A	86	86
(81-91) B		
(69-80) C		
(55-68) D		
(39-54) E		
(21-38) F		
(1-20) G		
Not energy efficient - higher running costs		
England & Wales		EU Directive 2002/91/EC 

Environmental Impact (CO ₂) Rating		
	Current	Potential
Very environmentally friendly - lower CO ₂ emissions		
(92 plus) A		
(81-91) B		
(69-80) C		
(55-68) D		
(39-54) E		
(21-38) F		
(1-20) G		
Not environmentally friendly - higher CO ₂ emissions		
England & Wales		EU Directive 2002/91/EC 

Ground Floor

Approx. 65.7 sq. metres (707.6 sq. feet)



Total area: approx. 65.7 sq. metres (707.6 sq. feet)