



KEY
EXECUTIVE
SALES

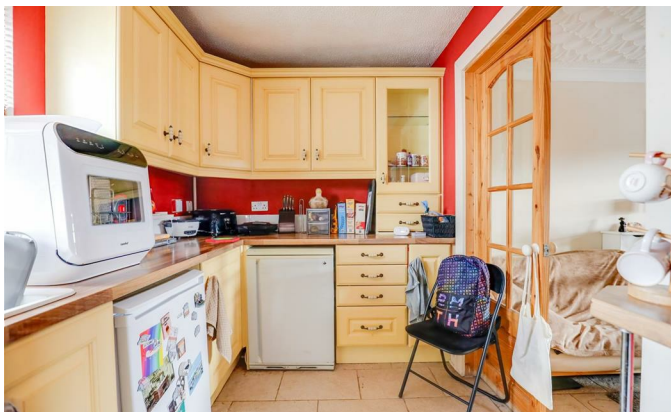
Louisa Place, , CF10 5BY

£130,000

Louisa Place, , CF10 5BY



- Two Double Bedroom
- No Chain
- Low monthly service charge and Resident permit parking
- Large and light living room with opening to adjacent kitchen
- Fantastic location, close to all amenities in Cardiff Bay and train/bus service to the City Centre
- Double glazing throughout and gas central heating via combination boiler



Presenting a lovely two bedroom top floor apartment, in the heart of Cardiff Bay within walking distance to the many amenities the Bay has to offer. Located in an excellent position just a mile from the City Centre, and only a 5 minute walk to Mermaid Quay.

This property offers a master bedroom with large fitted wardrobes and a good size second bedroom. The flat benefits from a spacious open plan lounge/dining and kitchen area. There is also Resident Parking available to the rear of the property.

Offered with No Onward Chain.

This would be an ideal purchase for a first time buyer or a landlord looking for a good investment. The apartment is currently let for £850pcm and will be vacant from the 1st June.

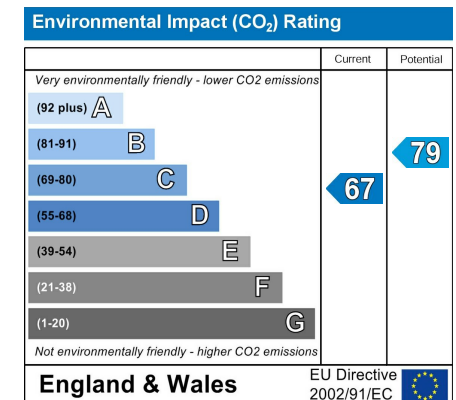
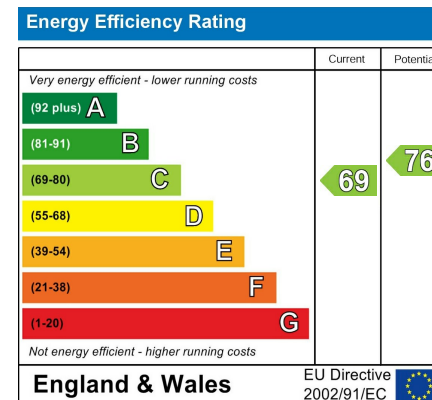
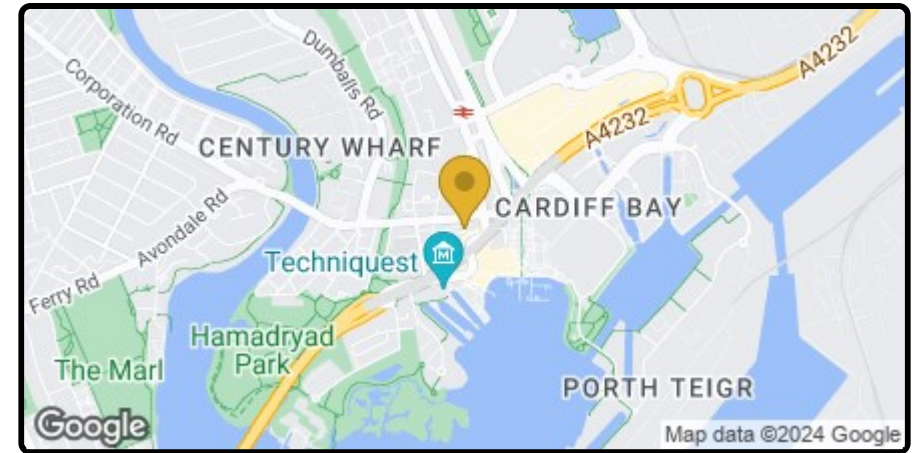
The property benefits from low service charges and ground rent.

Years left on lease - Approximately 104 Years

Service Charge - £720 Annually

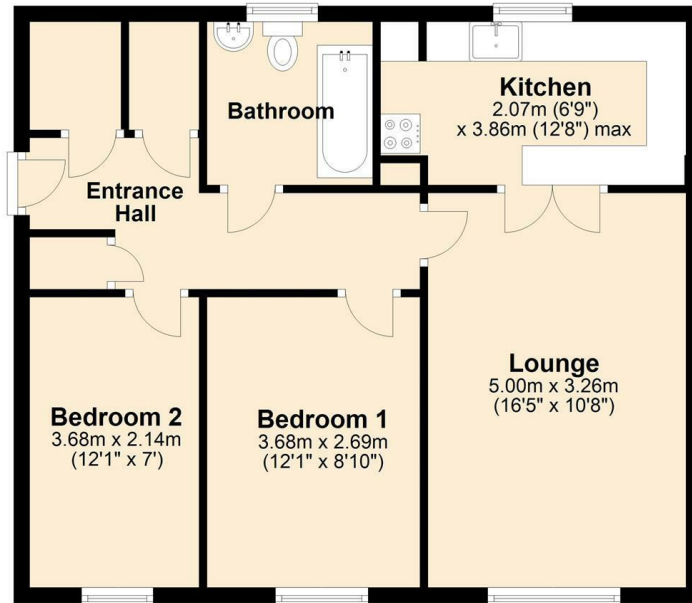
Ground Rent - £10 Annually

Council Tax Band C



Ground Floor

Approx. 59.4 sq. metres (639.8 sq. feet)



Total area: approx. 59.4 sq. metres (639.8 sq. feet)

Key Executive Sales

02920 489 000 | info@keyexecutivesales.co.uk | www.keylet.co.uk | 117-120 Bute Street, Cardiff Bay, Cardiff, CF10 5AE
Cardiff Property Lettings T/A Key Executive Sales | Reg. No. 05294705 | VAT Reg. 851012863

   @keyexecutivesales