



Offers in excess of £465,000 , Salisbury Road, Cardiff CF24 4AE



- 12 YEAR COMMERCIAL LEASE
- 6 BED HMO
- ANNUAL INCOME £34,766
- GREAT LOCATION



, Salisbury Road, Cardiff, CF24 4AE

***INVESTMENT OPPORTUNITY *** EXCELLENT YIELD ***

Key Executive Sales are offering to the market another excellent residential / commercial investment opportunity.

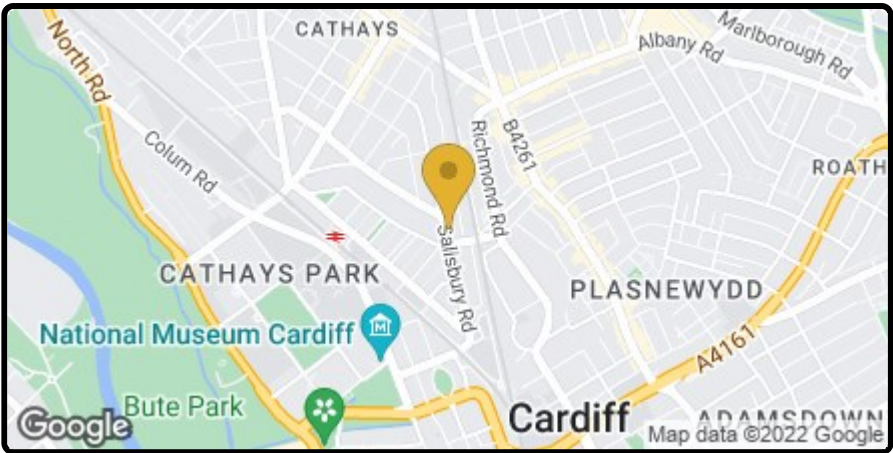
The property is divided into a six bedroom HMO, let currently at £2,040, and a commercial unit on a 15 year lease generating £11,000 per annum.

The total annual income of £34,766.

Council Tax Band - E

The commercial unit currently resides as a mini market and the HMO flat has six double bedrooms, living room, kitchen and two bathrooms.

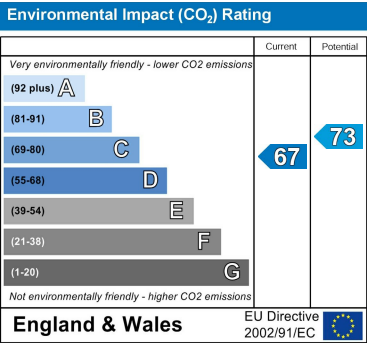
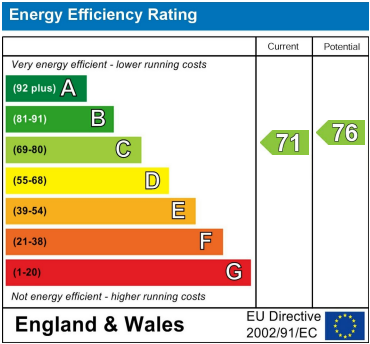
For more information or to book a viewing, please contact us on the following: 02920 489 000



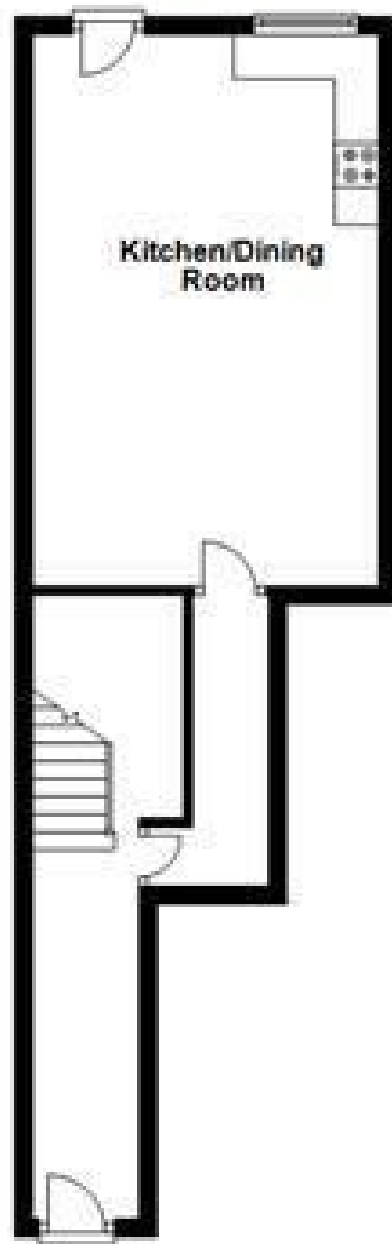
Key Executive Sales

02920 489 000 | info@keyexecutivesales.co.uk | www.keylet.co.uk | 117-120 Bute Street, Cardiff Bay, Cardiff, CF10 5AE
Cardiff Property Lettings T/A Key Executive Sales | Reg. No. 05294705 | VAT Reg. 851012863

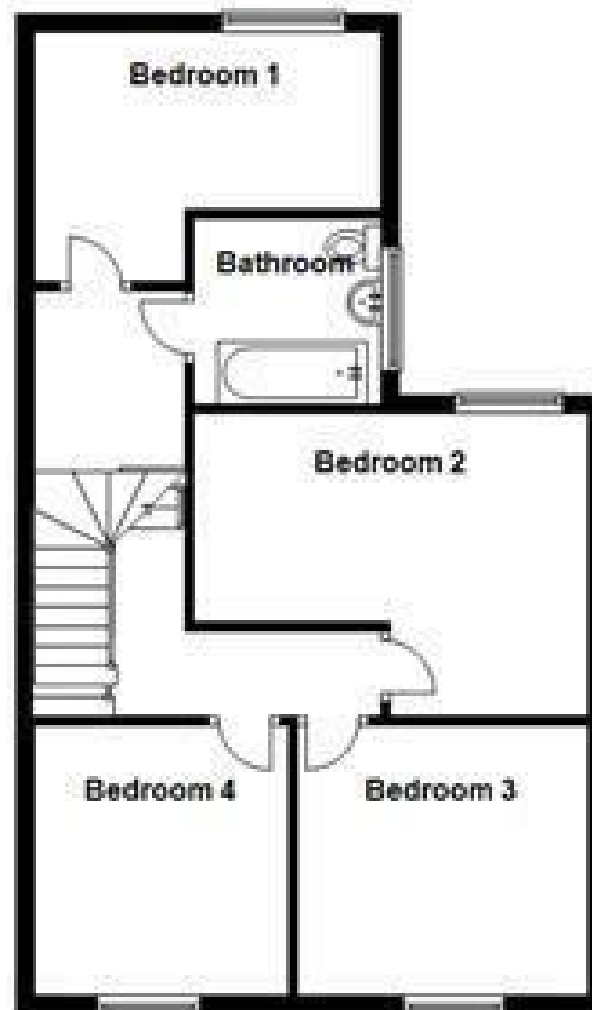
   @keyexecutivesales



Ground Floor



First Floor



Second Floor



PRODUCED BY KEYLET FOR ILLUSTRATIVE PURPOSES ONLY - NOT TO SCALE. This plan has been produced by Keylet in good faith. The position and size of floors, windows, appliances and other features are approximate only. Unauthorized reproduction of this plan is prohibited.
Plan produced using PlanUp