



13 Belfry, The Bailey

City Road | Manchester | M15 4ZW

£1,300 PCM



13 Belfry, The

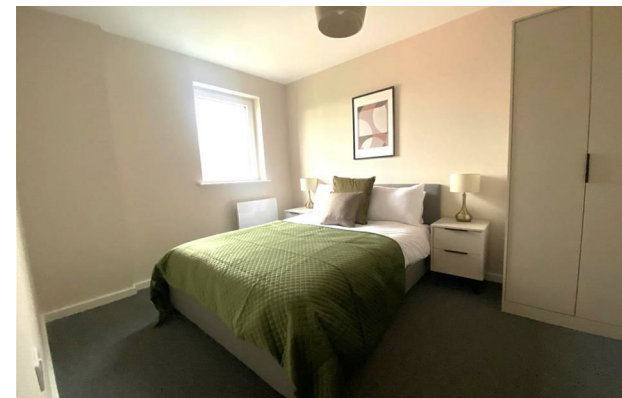
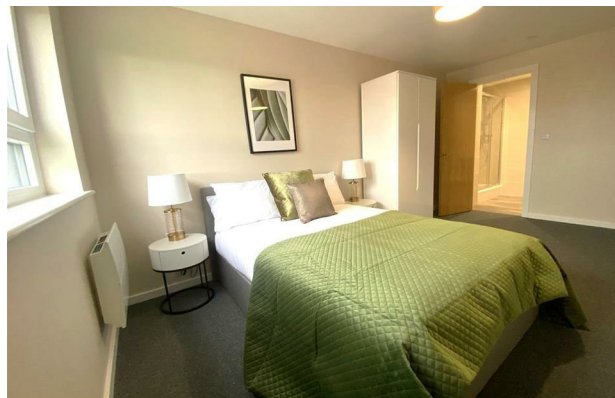
City Road |

Manchester | M15 4ZW

£1,300 PCM

2 BED, FURNISHED WITH PARKING. An excellent, spacious second floor two bedroom apartment in the newly completed Bailey development. The apartments are close to Deansgate and St. George's Park and have two of Manchester's major universities within a mile of the location. Comprises: entrance hall, storage cupboard, master bedroom, second double bedroom, bathroom with shower over bath, open plan living & dining room through to fitted kitchen and communal courtyard. The images of the apartment are of the showroom apartment.

- TWO BEDROOM APARTMENT
- SPACIOUS OPEN PLAN LIVING & DINING ROOM
- ALLOCATED PARKING INCLUDED
- SECOND FLOOR
- FURNISHED
- FITTED KITCHEN
- EASY ACCESS TO THE CITY CENTRE



Energy Efficiency Rating		
	Current	Potential
Very energy efficient - lower running costs		
(92 plus) A		
(81-91) B		
(69-80) C		
(55-68) D		
(39-54) E		
(21-38) F		
(1-20) G		
Not energy efficient - higher running costs		
England & Wales		EU Directive 2002/91/EC

68 Quay Street
Manchester
M3 3EJ

0161 513 2034
hello@thegea.co.uk
www.thegea.co.uk