



Apartment 3011 Beetham Tower

Deansgate | Manchester | M3 4LT

£1,600 PCM



Apartment 3011

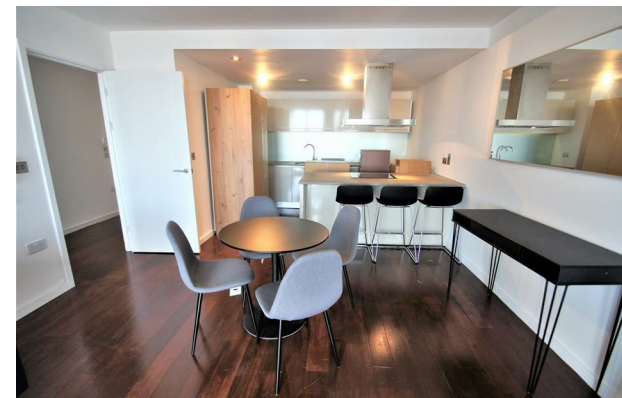
Deansgate |

Manchester | M3 4LT

£1,600 PCM

2 BED, FURNISHED WITH PARKING. A stunning two bedroom apartment on the 30th floor of the iconic Beetham Tower development. The property comprises: entrance hall, storage cupboard, master bedroom with en suite shower room, second double bedroom, bathroom with shower over bath, spacious open plan living & dining room through to fitted kitchen and breath-taking views of the city of Manchester. Further benefits are allocated parking and 24 hour concierge. Located on the city's main street, Deansgate, within a short walk of all the shops, department stores, bars & restaurants the city centre has to offer.

- TWO DOUBLE BEDROOMS
- SPACIOUS OPEN PLAN LIVING & DINING ROOM
- 30TH FLOOR
- 24 HOUR CONCIERGE
- ICONIC DEVELOPMENT
- BATHROOM & EN SUITE
- FURNISHED
- STUNNING VIEWS
- PARKING
- DEANSGATE LOCATION



Energy Efficiency Rating		
	Current	Potential
Very energy efficient - lower running costs		
(92 plus) A		
(81-91) B		
(69-80) C		
(55-68) D		
(39-54) E		
(21-38) F		
(1-20) G		
Not energy efficient - higher running costs		
England & Wales		EU Directive 2002/91/EC

68 Quay Street
Manchester
M3 3EJ

0161 513 2034
hello@thegea.co.uk
www.thegea.co.uk