



31 Strand Street | | Liverpool | L1 8LN

£1,200 PCM

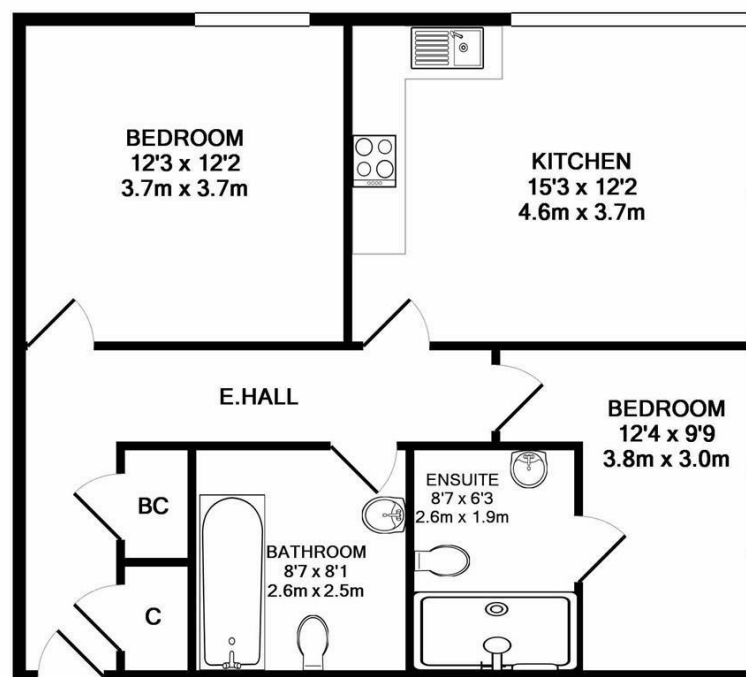
The
**GOOD
ESTATE**
AGENCY

31 Strand Street | Liverpool | L1 8LN £1,200 PCM

2 BED, FURNISHED WITH PARKING. An excellent, 6th floor two bedroom apartment in the fashionable and highly sought after One Park West development. Located in Liverpool ONE, in the heart of the city centre and clearly signposted along all major routes into the city.

The property comprises: entrance hall, hall cupboard, master bedroom with en suite shower room, second double bedroom, stylish house bathroom with shower over bath, spacious open plan living and dining room through to fully fitted kitchen. A landmark residential building and the jewel in the crown of Liverpool ONE, One Park West is a stunning addition to Liverpool's skyline and stands tall at 17-storeys. Its 326 apartments offer stunning views over Chavasse Park, Liverpool's two glorious cathedrals and its world famous waterfront. Designed by world renowned architect Cesar Pelli, famous for the

- TWO DOUBLE BEDROOMS
- BATHROOM & EN SUITE
- FURNISHED
- ALLOCATED PARKING
- OPEN PLAN LIVING & DINING ROOM
- 24 HOUR CONCIERGE
- INTERCOM
- LIFT ACCESS
- 6TH FLOOR
- LIVERPOOL ONE LOCATION



Energy Efficiency Rating		
	Current	Potential
Very energy efficient - lower running costs		
(92 plus) A		
(81-91) B	79	79
(69-80) C		
(55-68) D		
(39-54) E		
(21-38) F		
(1-20) G		
Not energy efficient - higher running costs		
England & Wales	EU Directive 2002/91/EC	

TOTAL APPROX. FLOOR AREA 672 SQ.FT. (62.4 SQ.M.)

Whilst every attempt has been made to ensure the accuracy of the floor plan contained here, measurements of doors, windows, rooms and any other items are approximate and no responsibility is taken for any error, omission, or mis-statement. This plan is for illustrative purposes only and should be used as such by any prospective purchaser. The services, systems and appliances shown have not been tested and no guarantee as to their operability or efficiency can be given
Made with Metropix ©2019

68 Quay Street
Manchester
M3 3EJ

0161 513 2034
hello@thegea.co.uk
www.thegea.co.uk