



238 St Georges Island

Kelso Place | Castlefield | Manchester | M15 4GQ

£1,395 PCM

The
GOOD
ESTATE
AGENCY

238 St Georges

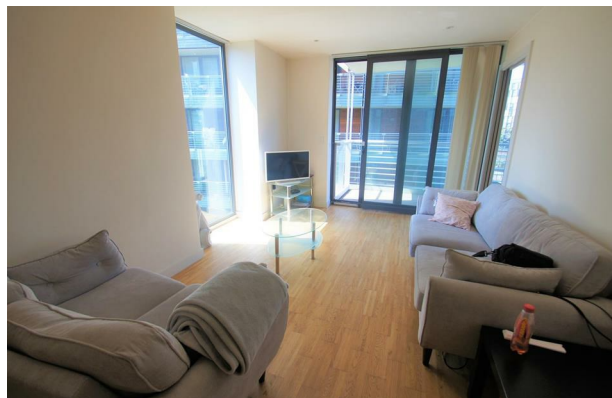
Kelso Place | Castlefield

Manchester | M15 4GQ

£1,395 PCM

2 BED, FURNISHED WITH 2 PARKING SPACES. This fantastic 3rd floor, two double bedroom, two bathroom apartment offers a beautiful full length balcony and excellent views. The property comprises: entrance hall with storage cupboard, spacious open plan living & dining room through to fitted kitchen, master bedroom with en suite shower room, second double bedroom and house bathroom. Located in Castlefield, a peaceful corner of Manchester city centre surrounded by canals, but next door to a selection of bars and restaurants and only a short walk from Deansgate. Situated in Block 2 and includes two allocated parking spaces.

- TWO DOUBLE BEDROOMS
- SPACIOUS LIVING & DINING ROOM
- FULL LENGTH BALCONY
- EXCELLENT VIEWS
- 24 HOUR CONCIERGE
- FURNISHED
- MASTER BEDROOM WITH EN SUITE SHOWER ROOM
- FITTED KITCHEN
- PARKING FOR 2 CARS
- CASTLEFIELD LOCATION



Energy Efficiency Rating		
	Current	Potential
Very energy efficient - lower running costs		
(92 plus) A		
(81-91) B		
(69-80) C		
(55-68) D		
(39-54) E		
(21-38) F		
(1-20) G		
Not energy efficient - higher running costs		
England & Wales		EU Directive 2002/91/EC

68 Quay Street
Manchester
M3 3EJ

0161 513 2034
hello@thegea.co.uk
www.thegea.co.uk