



13 The Cartwright, Spinners Mill

Hatter Street | Manchester | M4 5FZ

£1,000 PCM

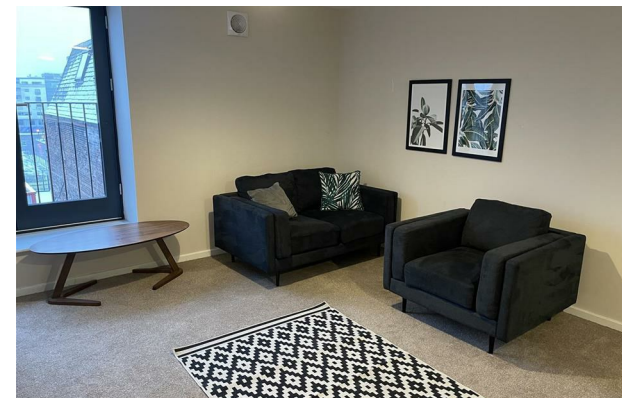


13 The Cartwright,

Hatter Street |
Manchester | M4 5FZ
£1,000 PCM

1 BED, FURNISHED. Once home to a fashion and textile workshop, The Cartwright is an elegantly converted residence located at the intersection of Manchester's growing NOMA and New Cross neighbourhoods. Celebrating the building's heritage while offering luxurious contemporary interiors, this development brings Manchester's history into the modern day. The 3rd floor property comprises: entrance hall, storage cupboard, double bedroom, stylish house bathroom, spacious open plan living and dining room through to fitted kitchen. Further benefits include intercom and lift access. Conveniently located just off the city's inner ring road, within a short walk to The Northern Quarter & Victoria Station.

- ONE DOUBLE BEDROOM
- STYLISH BATHROOM
- SPACIOUS OPEN PLAN LIVING & DINING ROOM
- FORMER TEXTILE HOUSE
- ANCOATS LOCATION
- FITTED KITCHEN
- FURNISHED
- PERIOD CONVERSION
- 592 SQ FT
- CONVENIENT FOR THE NORTHERN QUARTER & VICTORIA STATION



Energy Efficiency Rating		
	Current	Potential
Very energy efficient - lower running costs		
(92 plus) A		
(81-91) B		
(69-80) C		
(55-68) D	63	63
(39-54) E		
(21-38) F		
(1-20) G		
Not energy efficient - higher running costs		
England & Wales		EU Directive 2002/91/EC

68 Quay Street
Manchester
M3 3EJ
0161 513 2034
hello@thegea.co.uk
www.thegea.co.uk