



Hulme Hall Road | | Manchester | M15 4LY

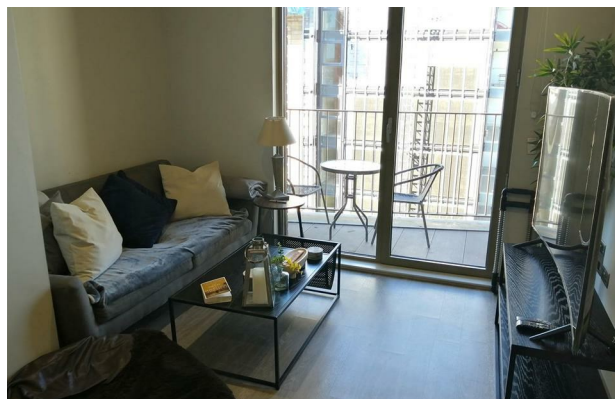
£1,250

The
GOOD
ESTATE
AGENCY

Hulme Hall Road |
Manchester | M15 4LY
£1,250

2 BED, FURNISHED. This fantastic 5th floor, double bedroom apartment. The property comprises: entrance hall with storage cupboard, spacious open plan living & dining room through to fitted kitchen, bedroom, house bathroom. 2nd bedroom with ensuite shower room. Located in Castlefield, a peaceful corner of Manchester city centre surrounded by canals, but next door to a selection of bars and restaurants and only a short walk from Deansgate.

- 2 DOUBLE BEDROOMS
- SPACIOUS LIVING & DINING ROOM
- CONCIERGE
- 5TH FLOOR
- FURNISHED
- FITTED KITCHEN
- CASTLEFIELD LOCATION
- BALCONY



| Energy Efficiency Rating | | |
|---|---------|-------------------------|
| | Current | Potential |
| Very energy efficient - lower running costs | | |
| (92 plus) A | | |
| (81-91) B | | |
| (69-80) C | | |
| (55-68) D | | |
| (39-54) E | | |
| (21-38) F | | |
| (1-20) G | | |
| Not energy efficient - higher running costs | | |
| England & Wales | | EU Directive 2002/91/EC |

68 Quay Street
Manchester
M3 3EJ
0161 513 2034
hello@thegea.co.uk
www.thegea.co.uk