





KEY FEATURES

- Recently refurbished
- Abundance of light throughout
- Ideally located

We are delighted to present a beautiful and spacious recently refurbished three-bedroom apartment, situated on the second floor of a charming and renovated building located on a quiet and residential tree-lined street in the heart of St John's Wood.

Comprising three bedrooms, three bathrooms (two ensembles), and a contemporary open-plan reception room and kitchen, boasting an abundance of light throughout, ideal for entertaining.

Clifton Hill is located between Hamilton Terrace and Abbey Road thus within close proximity to the American School in London (ASL), St Johns Wood Underground Station (Jubilee Line) and to all of the amenities of St Johns Wood High Street. Regent's Park and Maida Vale (Bakerloo Line) are also close by.



3 BEDROOM



3 BATHROOM



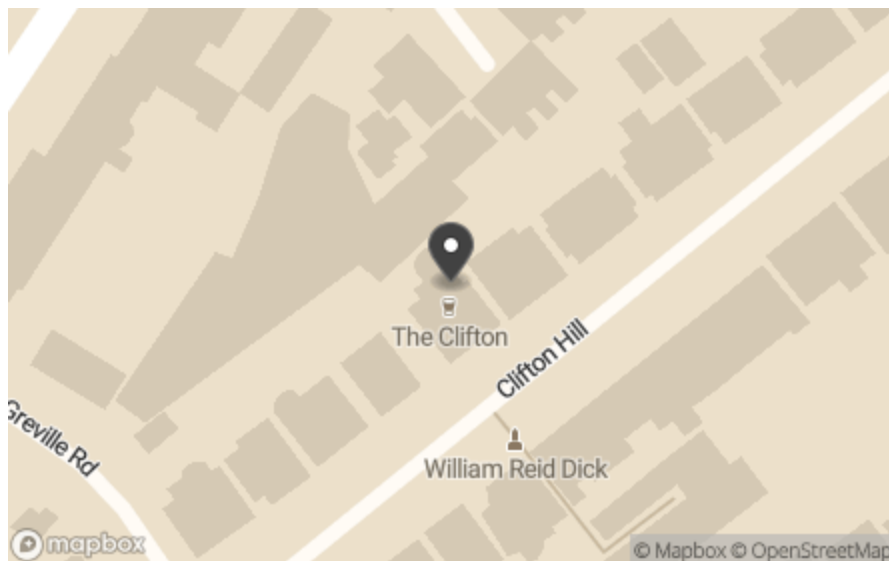


ACCOMMODATION

Entrance hall
Open plan reception room,
Kitchen/dining area
Family shower room
Principal ensuite bedroom
Two further bedrooms (one ensuite)

LOCATION

Clifton Hill is located between Hamilton Terrace and Abbey Road thus within close proximity to the American School in London (ASL), St Johns Wood Underground Station (Jubilee Line) and to all of the amenities of St Johns Wood High Street. Regent's Park and Maida Vale (Bakerloo Line) are also close by.



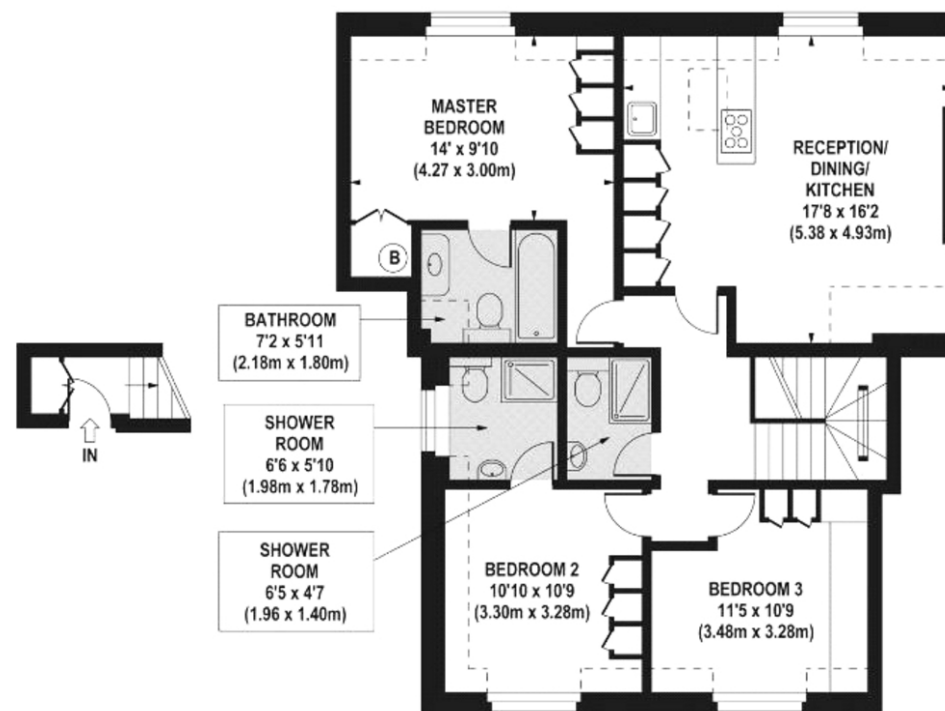




CLIFTON HILL, NW8 0JT

Approx. Gross Internal Floor Area 865 sq ft. / 80.36 sq.m

Approx. Gross Internal Floor Area Including Restricted Heights 950 sq ft. / 88.26 sq.m



FIRST FLOOR
ENTRANCE
GROSS INTERNAL
FLOOR AREA 24 SQ FT

SECOND FLOOR
GROSS INTERNAL
FLOOR AREA 841 SQ FT



24 Curzon Street,
London, W1J 7TF
londoninformation@beauchamp.com
020 7499 7722

TERMS

Price: £1,150 per week

Council Tax Band: E

Viewing: By appointment only

These particulars have been produced as a general guide for this property only and no other purpose. They are not an offer or contract. You should not rely on statements in these particulars or by word of mouth or in writing as being factually accurate about the property, its condition or its value. Neither any primary agent or joint agent has any authority to make or give any representations or warranties in relation to the property, and accordingly any information given is entirely without responsibility on the part of the agents or lessor(s). The photographs show only certain parts of the property as they appeared at the time they were taken. Any areas, measurements and distances given are approximate only. Any reference to alterations to, or use of, any part of the property does not mean that any necessary planning, building regulations or other consent has been obtained nor have any services, equipment or facilities been tested. A lessee should satisfy themselves by inspection or otherwise. The VAT position relating to the property may change without notice. Please contact us for further information regarding the approved Client Money Protection (CMP) scheme and the property redress scheme which we are a member of.

