



MAPLE COURT, N1

HAMPSTEAD, LONDON





KEY FEATURES

- Terrace
- Private garden
- Communal gardens
- Two underground parking spaces
- Gated entrance
- Gym
- Communal indoor swimming pool
- 24 Hour Concierge



4 BEDROOMS



5 BATHROOMS





Arranged over approximately 5,553 sq. ft is this immaculately presented four-bedroom apartment set over the ground and upper raised floors of this in demand development of Maple Court. This luxurious apartment has everything to meet the needs of family living, as well as elegant and sophisticated entertaining.

The first floor boasts a beautiful reception room, kitchen room with seating area, a separate dining room and study. The fourth bedroom suite is located on the first floor and sitting room with direct access to the garden, in addition to the guest WC.

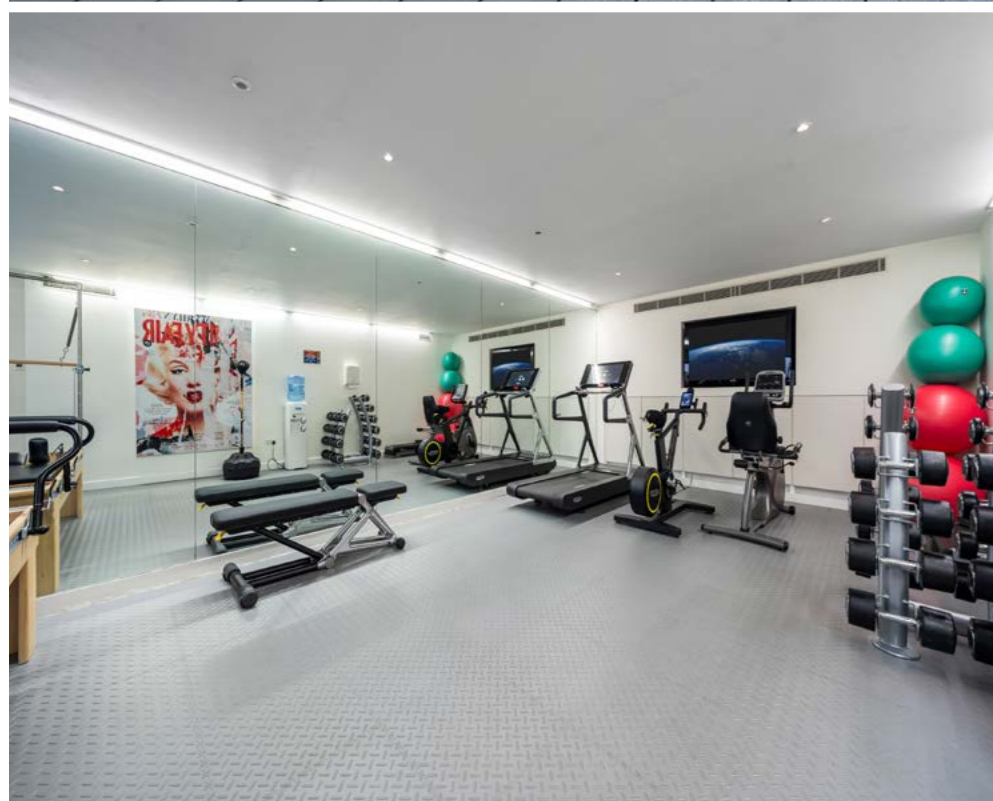
The ground floor has three large bedroom suites, all having access onto the private terrace. There is also a utility room located on this level.

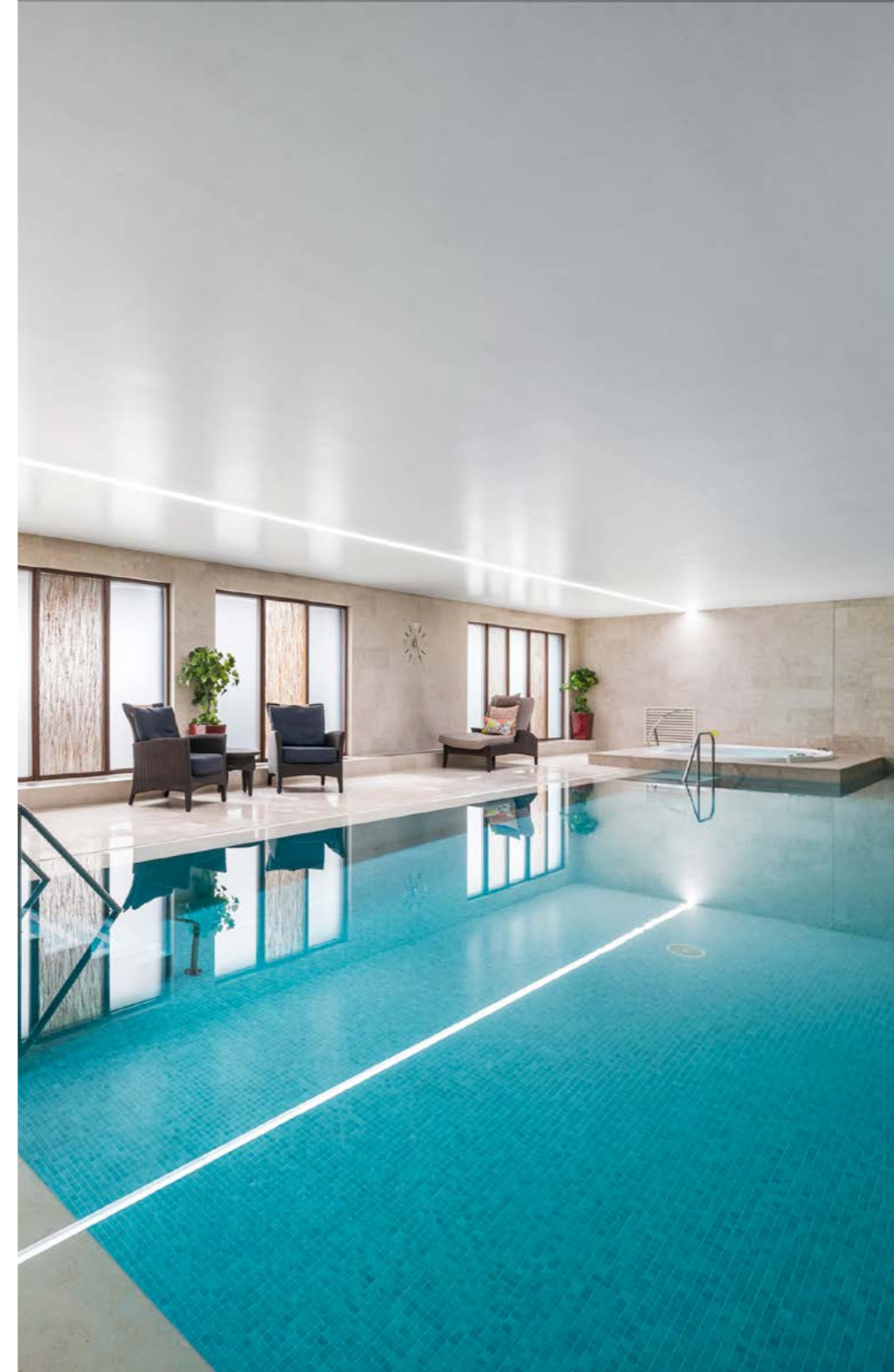




ACCOMMODATION

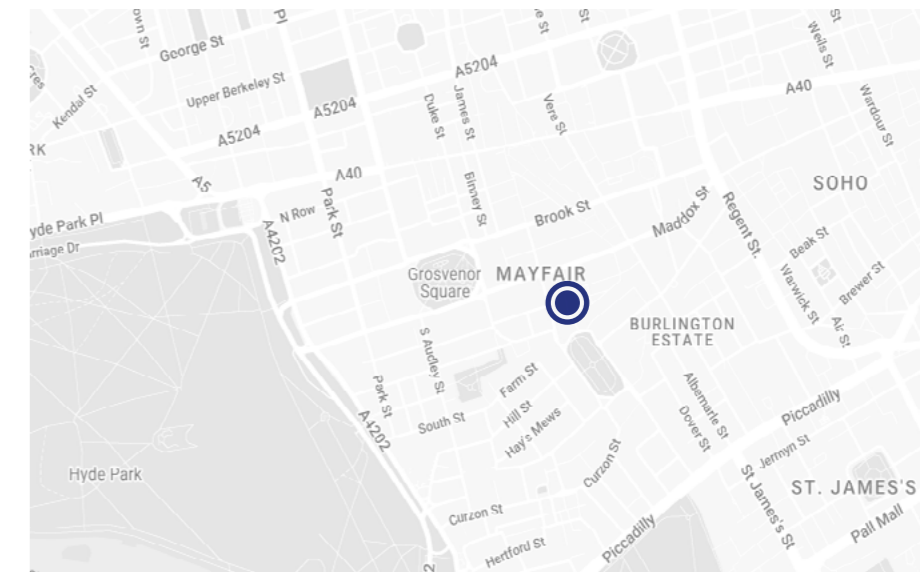
- Reception room with balcony
- Kitchen
- Dining room
- Sitting room
- Principal suite with ensuite and walk-in wardrobe
- 3 further bedrooms with ensuites
- Bedroom leading to garden
- Toilet
- Laundry





LOCATION

Set on a gorgeous road in the Hampstead Garden Suburb, Maple Court is within a short walk to the scenic Hampstead Heath park and Hampstead Golf Club and Highgate Village close by. Highgate and East Finchley underground stations are also within walking distance, providing direct access to Central London.

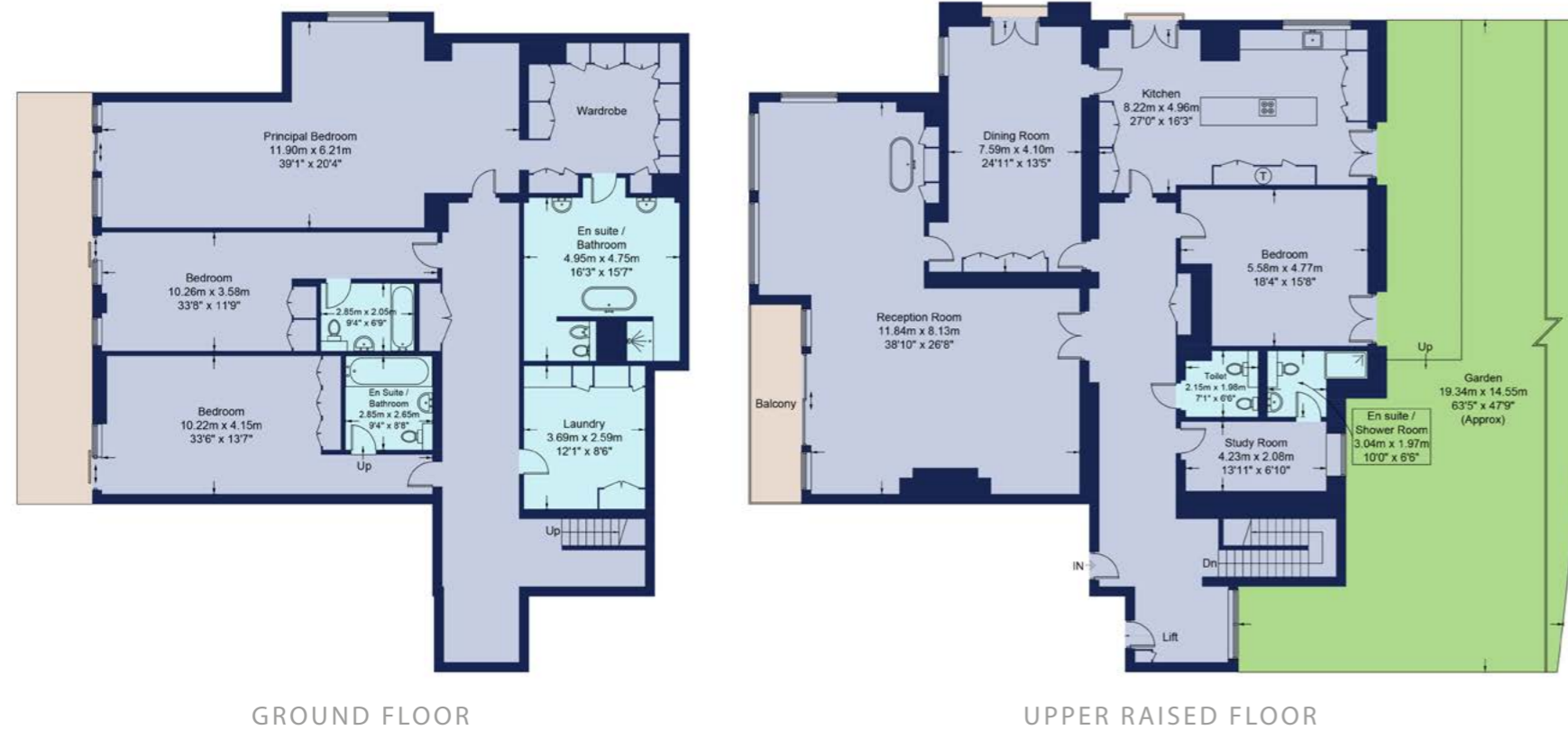


FLOORPLAN

Approx Gross Internal Area:

515.9 sq m / 5553 sq ft

Not to Scale



GROUND FLOOR

UPPER RAISED FLOOR

TERMS

Price: £7,000/week

Tenure: Leasehold

Council Tax Band: H

Viewing: By appointment only



ST JOHNS WOOD LETTINGS

sjw@beauchamp.com

+44 (0)20 7722 9793

These particulars have been produced as a general guide for this property only and no other purpose. They are not an offer or contract. You should not rely on statements in these particulars or by word of mouth or in writing as being factually accurate about the property, its condition or its value. Neither any primary agent or joint agent has any authority to make or give any representations or warranties in relation to the property, and accordingly any information given is entirely without responsibility on the part of the agents or lessor(s). The photographs show only certain parts of the property as they appeared at the time they were taken. Any areas, measurements and distances given are approximate only. Any reference to alterations to, or use of, any part of the property does not mean that any necessary planning, building regulations or other consent has been obtained nor have any services, equipment or facilities been tested. A lessee should satisfy themselves by inspection or otherwise. The VAT position relating to the property may change without notice. Please contact us for further information regarding the approved Client Money Protection (CMP) scheme and the property redress scheme which we are a member of.

