

TANGO HOUSE, THE VALE NW11

GOLDERS GREEN, LONDON



KEY FEATURES

- Gated drive
- New build
- Garden

A new built, beautifully presented five bedroom family home with off street parking and garden located in Golders Green.

A contemporary semi-detached home, arranged over three floors, filled with light, measuring at 2,214 sq ft. The house is set back from the road behind its own gated drive and is located at the top of The Vale close to all the amenities of Golders Green.

The house forms one of a pair of two striking contemporary homes designed by the renowned architectural firm of XUL and utilises high quality materials and finishes throughout.



5 BEDROOM



3 BATHROOM





ACCOMMODATION

- Living/dining room
- Kitchen
- Master bedroom with ensuite and dressing room
- 4 further bedrooms, one with ensuite
- Utility room
- Family bathroom
- Garden
- Patio

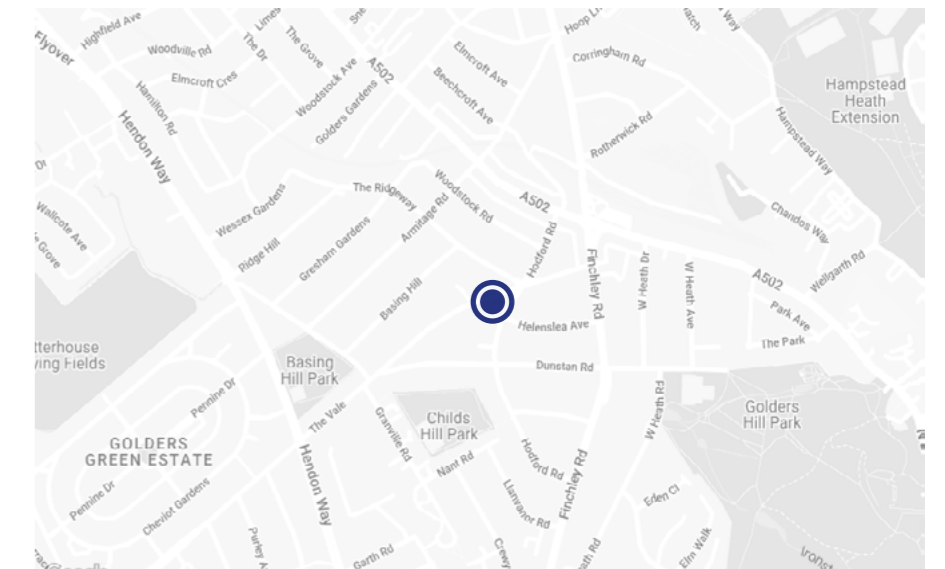
The ground floor provides spacious open plan living of reception/dining room/kitchen within a 31' x 23'6 footplate with sliding doors leading out to the two dedicated south facing garden areas, one measuring 30'1 x 25' and the side garden 22'3 x 13'7. There is a guest wc located in the entrance lobby. The first floor offers three double bedrooms (one with an en-suite shower room), a family bathroom and a utility room. The second floor provides a large master suite comprising bedroom, generous walk in dressing room and en-suite bathroom. There is also a further double bedroom/study on this floor.





LOCATION

Located at the top of the Vale, Tango House is conveniently 0.3 miles from Golders Green underground station as well as many shops, cafes and restaurants, and the beautiful greenery Golders Hill Park.

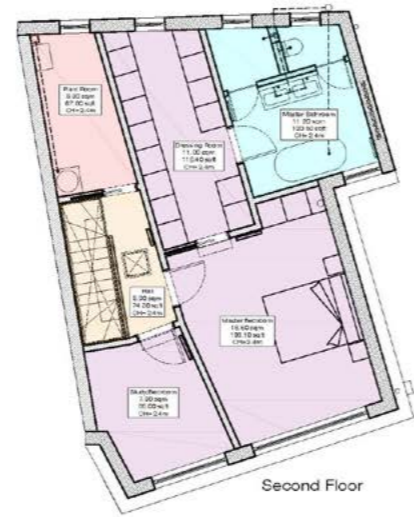
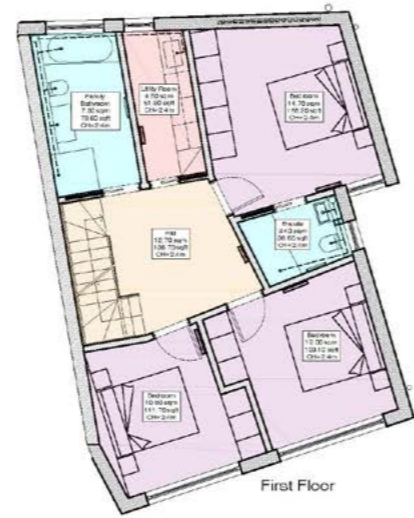
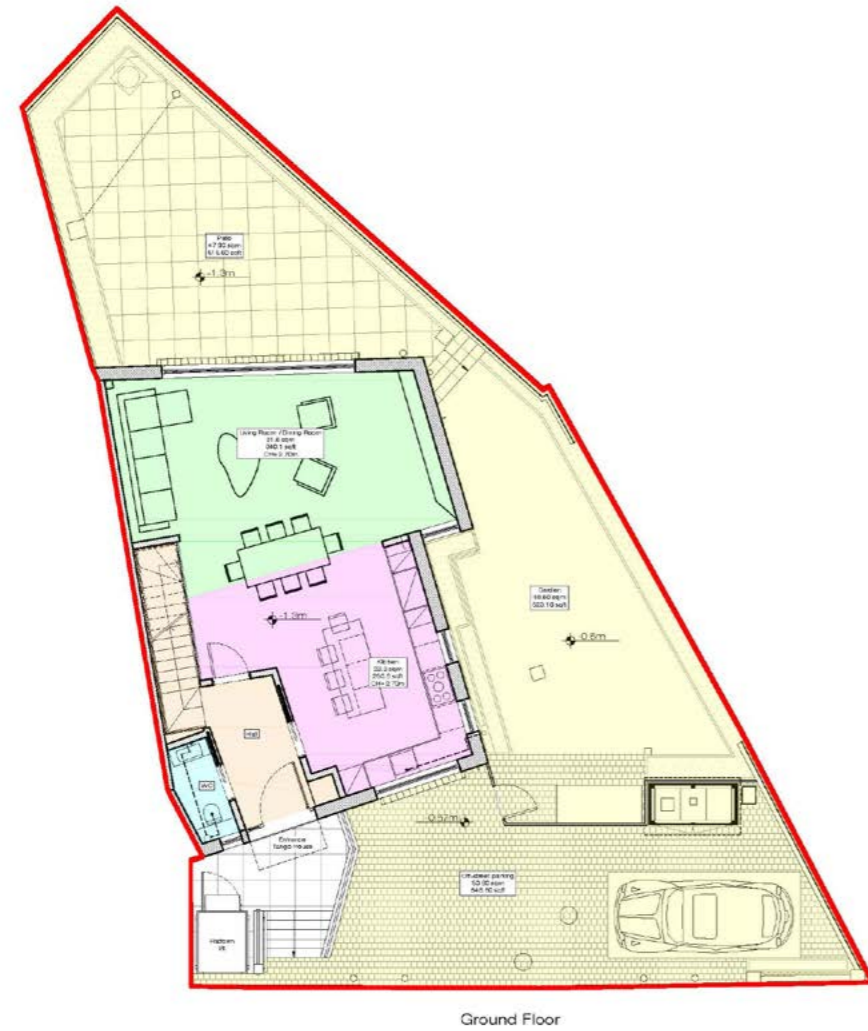


FLOORPLAN

Approx Gross Internal Area:

205.13 sq m / 2,208 sq ft

Not to Scale



TERMS

Price: £2,300,000

Tenure: Freehold

Council Tax Band: G

Viewing: By appointment only



ST JOHNS WOOD SALES
sjw@beauchamp.com
+44 (0)20 7722 9793

These particulars have been produced as a general guide for this property only and no other purpose. They are not an offer or contract. You should not rely on statements in these particulars or by word of mouth or in writing as being factually accurate about the property, its condition or its value. Neither any primary agent or joint agent has any authority to make or give any representations or warranties in relation to the property, and accordingly any information given is entirely without responsibility on the part of the agents or lessor(s). The photographs show only certain parts of the property as they appeared at the time they were taken. Any areas, measurements and distances given are approximate only. Any reference to alterations to, or use of, any part of the property does not mean that any necessary planning, building regulations or other consent has been obtained nor have any services, equipment or facilities been tested. A lessee should satisfy themselves by inspection or otherwise. The VAT position relating to the property may change without notice. Please contact us for further information regarding the approved Client Money Protection (CMP) scheme and the property redress scheme which we are a member of.

