



NETHERHALL GARDENS, NW3

HAMPSTEAD, LONDON



KEY FEATURES

- Garage
- Garden
- Gated residence

Orchard Corner is a fully detached 5 bedroom house that stands in approximately 0.5 acre of landscaped gardens in Netherhall Gardens in Hampstead. The house itself comprises of approximately 3,467 sq ft set across two floors.

On the ground floor there is a sizeable reception room, a study/family room, a kitchen that opens onto a breakfast room and a dining room/second reception room. On the first floor there is a principal bedroom with an en-suite bathroom and dressing room, four further bedrooms and three further bathrooms. Orchard Corner further benefits from a large carriage driveway that provides ample off-street parking in addition to a single garage. There are landscaped gardens with large areas of lawn, flower beds and fruit trees as well as terraces.



5 BEDROOMS



4 BATHROOMS





ACCOMMODATION

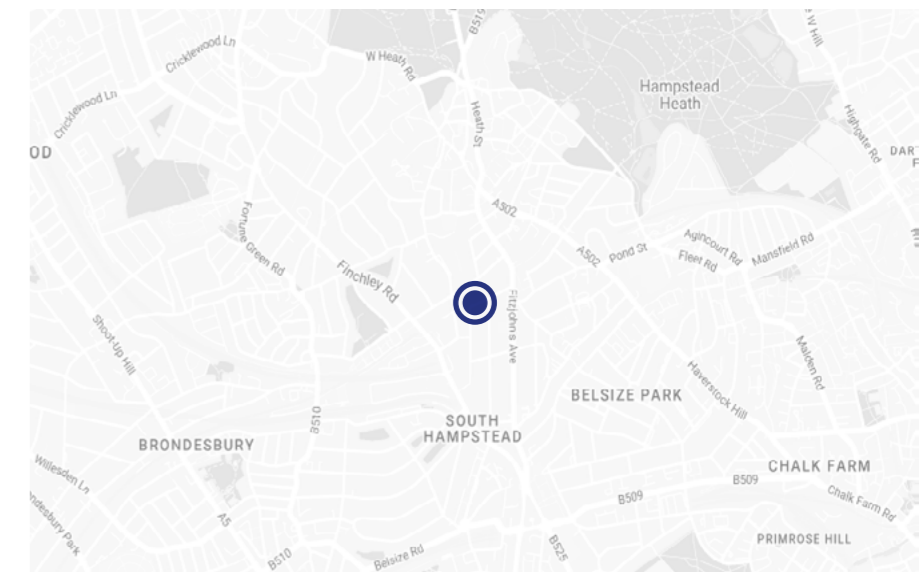
- 2 Reception rooms
- Kitchen/dining room
- Utility
- Principal suite with dressing room and ensuite
- 4 bedrooms, 2 with ensuites
- Bathroom
- Garage
- Storage
- Garden





LOCATION

Netherhall Gardens is a prime residential road to the south of Hampstead Village which is well located for numerous schools as well as Hampstead Underground (Northern Line) and Swiss Cottage Underground (Jubilee Line).

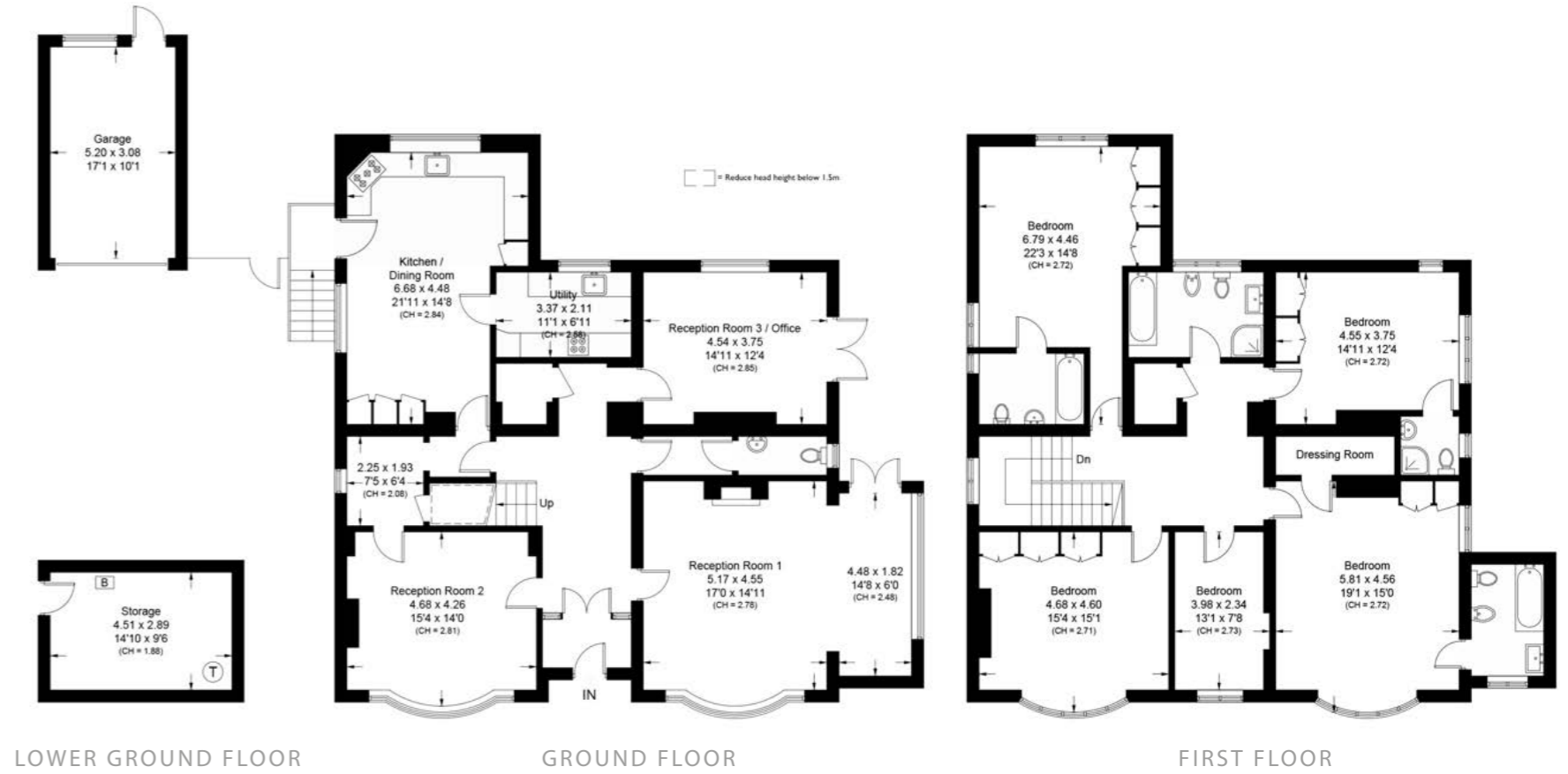




FLOORPLAN

Approx Gross Internal Area:
322.1 sq m / 3467 sq ft

Not to Scale



TERMS

Price: £8,500,000

Tenure: Freehold

EPC: E

Council Tax Band: H

Viewing: By appointment only



ST JOHNS WOOD SALES

sjw@beauchamp.com

+44 (0)20 7722 9793

These particulars have been produced as a general guide for this property only and no other purpose. They are not an offer or contract. You should not rely on statements in these particulars or by word of mouth or in writing as being factually accurate about the property, its condition or its value. Neither any primary agent or joint agent has any authority to make or give any representations or warranties in relation to the property, and accordingly any information given is entirely without responsibility on the part of the agents or lessor(s). The photographs show only certain parts of the property as they appeared at the time they were taken. Any areas, measurements and distances given are approximate only. Any reference to alterations to, or use of, any part of the property does not mean that any necessary planning, building regulations or other consent has been obtained nor have any services, equipment or facilities been tested. A lessee should satisfy themselves by inspection or otherwise. The VAT position relating to the property may change without notice. Please contact us for further information regarding the approved Client Money Protection (CMP) scheme and the property redress scheme which we are a member of.



BEAUCHAMP
ESTATES