

Your local property experts



21 Elizabethan Way, Rugeley, WS15 2EE

£250,000



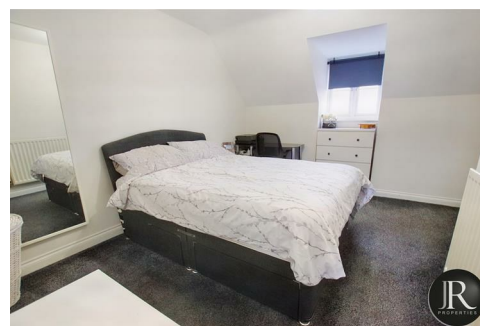
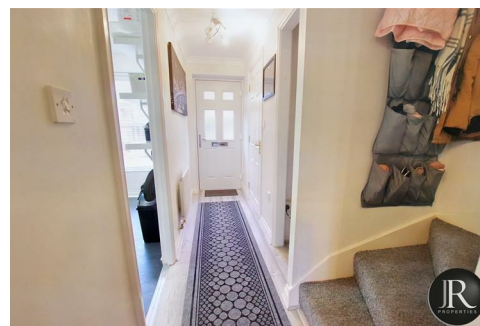
rightmove 
find your happy

Sales : 01889 577 731
e : enquiries@jrpropertiesstaffs.com
w : www.jrpropertiesstaffs.com

**** VIRTUAL VIEWING AVAILABLE **** JR Properties are pleased to offer for sale this **EXTREMELY WELL PRESENTED** & spacious three storey end terraced property located in a popular location. The property needs to be viewed to appreciate and specific attention should be focused on the top floor master suite with dressing room and en-suite.

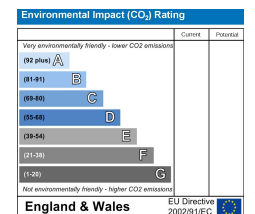
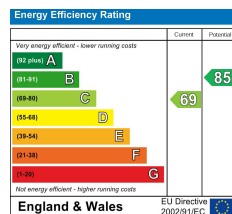
The accommodation includes a spacious hallway with guest wc and access to the re-fitted kitchen, a spacious lounge with French doors leading to rear garden. The first floor landing provides access to two double bedrooms and a family bathroom. The second floor master suite has another double bedroom, re-fitted ensuite and walk-in dressing room.

Externally to the front there is a driveway leading to the single garage, gated side access to rear and lawn with path leading to entrance. There is a lovely low maintenance rear garden with artificial lawns and patio area.



rightmove 
find your happy

Sales : 01889 577 731
e : enquiries@jrpropertiesstaffs.com
w : www.jrpropertiesstaffs.com



rightmove 
find your happy

Sales : 01889 577 731
e : enquiries@jrpropertiesstaffs.com
w : www.jrpropertiesstaffs.com