

# Your local property experts



25a New Road, Armitage, WS15 4AA

Guide Price £199,950



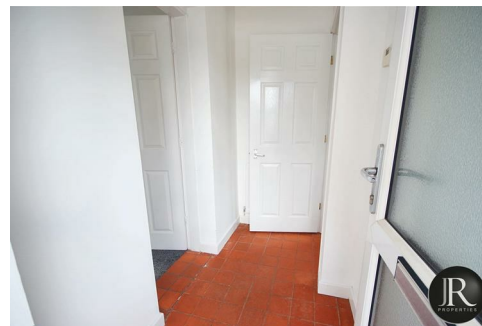
**rightmove**   
find your happy

Sales : 01889 577 731  
e : [enquiries@jrpropertiesstaffs.com](mailto:enquiries@jrpropertiesstaffs.com)  
w : [www.jrpropertiesstaffs.com](http://www.jrpropertiesstaffs.com)

JR Properties Ltd, 25b Horsefair, Rugeley, Staffs, WS15 2EJ  
VAT No: 167 4441 94 Company Reg: 7673595

**\*\* VIRTUAL VIEWING TOUR \*\* NO UPWARD CHAIN \*\* IDEAL FIRST TIME OR INVESTMENT BUY \*\*** JR Properties are pleased to offer For Sale this well presented two bedroom semi detached house situated in the popular village of Armitage & Handsacre with easy commuter networks to Lichfield City Centre and Rugeley Town Centre.

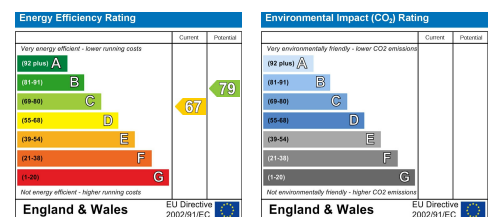
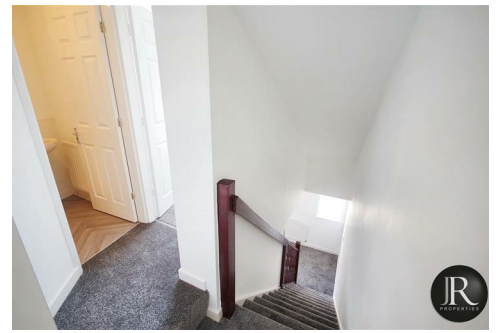
The accommodation offers; entrance hall, kitchen/diner, spacious lounge with stairs leading to the first floor, two bedrooms & bathroom. There is a low maintenance fully enclosed rear garden and parking to the front for one vehicle.



**rightmove**   
find your happy

Sales : 01889 577 731  
e : [enquiries@jrpropertiesstaffs.com](mailto:enquiries@jrpropertiesstaffs.com)  
w : [www.jrpropertiesstaffs.com](http://www.jrpropertiesstaffs.com)





**rightmove**   
find your happy

Sales : 01889 577 731  
e : [enquiries@jrpropertiesstaffs.com](mailto:enquiries@jrpropertiesstaffs.com)  
w : [www.jrpropertiesstaffs.com](http://www.jrpropertiesstaffs.com)