

Your local property experts



10 St. Anthony's Close, Rugeley, WS15 2EA
Offers In The Region Of £280,000



rightmove 
find your happy

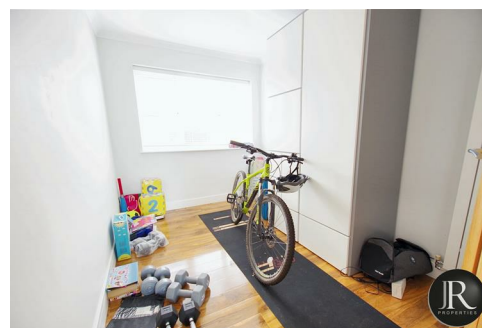
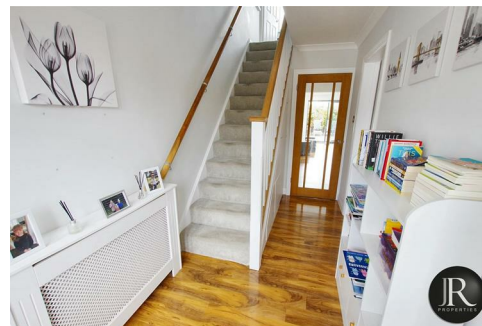
Sales : 01889 577 731
e : enquiries@jrpropertiesstaffs.com
w : www.jrpropertiesstaffs.com

**** VIRTUAL TOUR AVAILABLE ** NO CHAIN ** REDUCED TO SELL ** MOTIVATED SELLER **** JR Properties are pleased to offer for sale this extremely well presented link detached family home situated in a cul-de-sac within walking distance to the town centre and local amenities. Offering generous living space with four bedrooms this property really has to be seen to appreciate the accommodation and style on offer!

The accommodation offering; reception hallway with stairs rising to the first floor, door to the family lounge and door to the impressive extended kitchen/dining/family room with bi-fold doors to the secluded rear garden and an attractive lantern roof. From here leads the inner hall with door to the versatile office/playroom or potential bedroom four, guest WC, a storage cupboard which has plumbing for the washing machine and double glazed French doors leading to the rear.

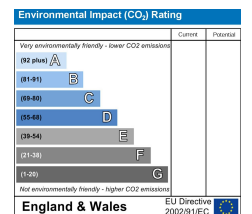
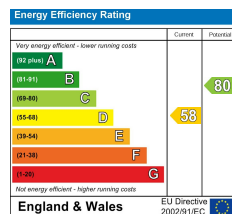
The first floor has three bedrooms and a re-fitted family bathroom.

Externally the property is approached by a newly tarmacked drive with paved edging offering ample off road parking and there is a private fully enclosed low maintenance rear garden laid to patio with raised display borders. A perfect space for entertaining.



rightmove 
find your happy

Sales : 01889 577 731
e : enquiries@jrpropertiesstaffs.com
w : www.jrpropertiesstaffs.com



rightmove 
find your happy

Sales : 01889 577 731
e : enquiries@jrpropertiesstaffs.com
w : www.jrpropertiesstaffs.com