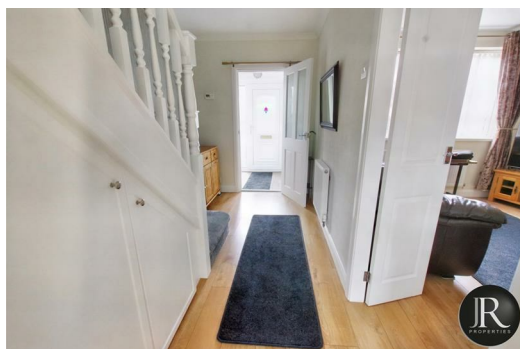
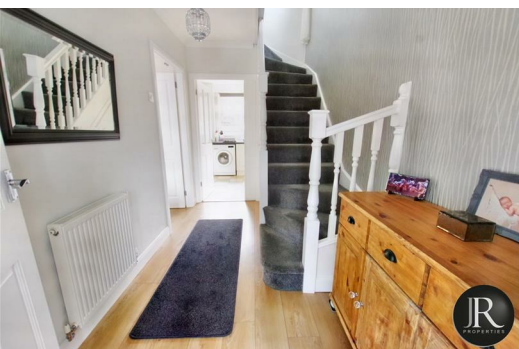


Your local property experts



3 Lichfield Road, Rugeley, WS15 4DE

Guide Price £255,000



**rightmove**   
find your happy

Sales : 01889 577 731  
e : [enquiries@jrpropertiesstaffs.com](mailto:enquiries@jrpropertiesstaffs.com)  
w : [www.jrpropertiesstaffs.com](http://www.jrpropertiesstaffs.com)



**\*\* VIRTUAL TOUR AVAILABLE \*\*** JR Properties are pleased to offer For Sale this extremely well presented three bedroom semi detached family home situated in the popular village of Armitage & Handsacre. We advise viewing to avoid disappointment.

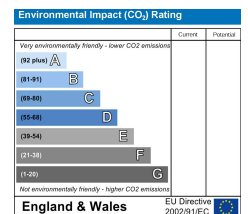
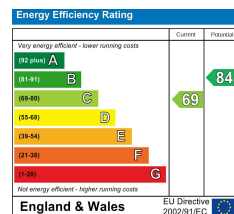
The accommodation comprises of; entrance porch with useful storage cupboards with door leading to reception through hallway where the stairs lead to the first floor accommodation and having doors to the family lounge and the spacious kitchen/diner. A patio door leads from the kitchen to the rear garden.

To the first floor there are three good sized bedrooms and family bathroom. Externally the property offers ample off road parking to the front and a low maintenance, private rear garden mainly laid to patio. There is a rear gate which leads to the single garage.



**rightmove**   
find your happy

Sales : 01889 577 731  
e : [enquiries@jrpropertiesstaffs.com](mailto:enquiries@jrpropertiesstaffs.com)  
w : [www.jrpropertiesstaffs.com](http://www.jrpropertiesstaffs.com)



**rightmove**   
find your happy

Sales : 01889 577 731  
e : enquiries@jrpropertiesstaffs.com  
w : www.jrpropertiesstaffs.com