

Anne Boleyn Close, Eastchurch
Guide Price £350,000

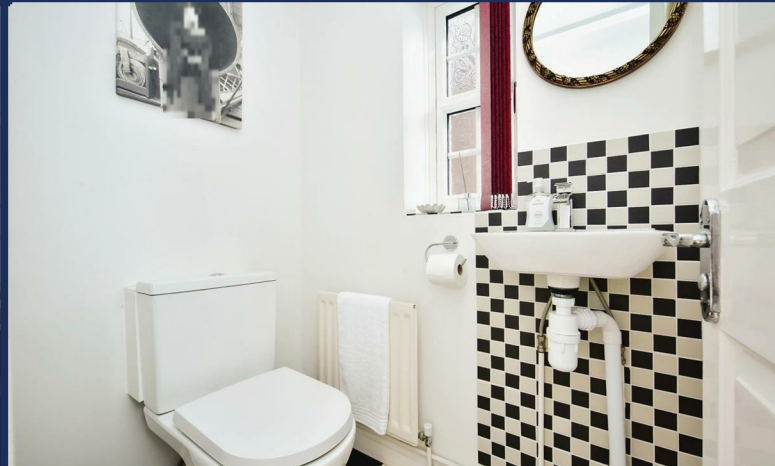
Key Features

- ***Guide Price £350,000 - £375,000***
- Three Bedroom Detached House
- No Onward Chain
- Beautifully Presented
- Off Road Parking & Garage
- Situated On A Popular Estate
- Quiet Cul-De-Sac
- Gardeners Dream
- EPC Register D (66)
- Council Tax Band D

Property Summary

*** Guide Price £350,000 - £375,000 ***

Discover this beautifully presented three-bedroom detached house situated in the quiet cul-de-sac of Anne Boleyn Close, Eastchurch. Perfect for families, this home offers a spacious and well-maintained living environment. The property boasts three generous bedrooms, providing ample space for a growing family.



Entry Hall

Downstairs W/C

Living Room
16'0 x 12'4

Dining Room
9'9 x 7'6

Kitchen
9'10 x 7'8

Sun Room
13'1 x 12'2

Bedroom 1
12'8 x 8'10

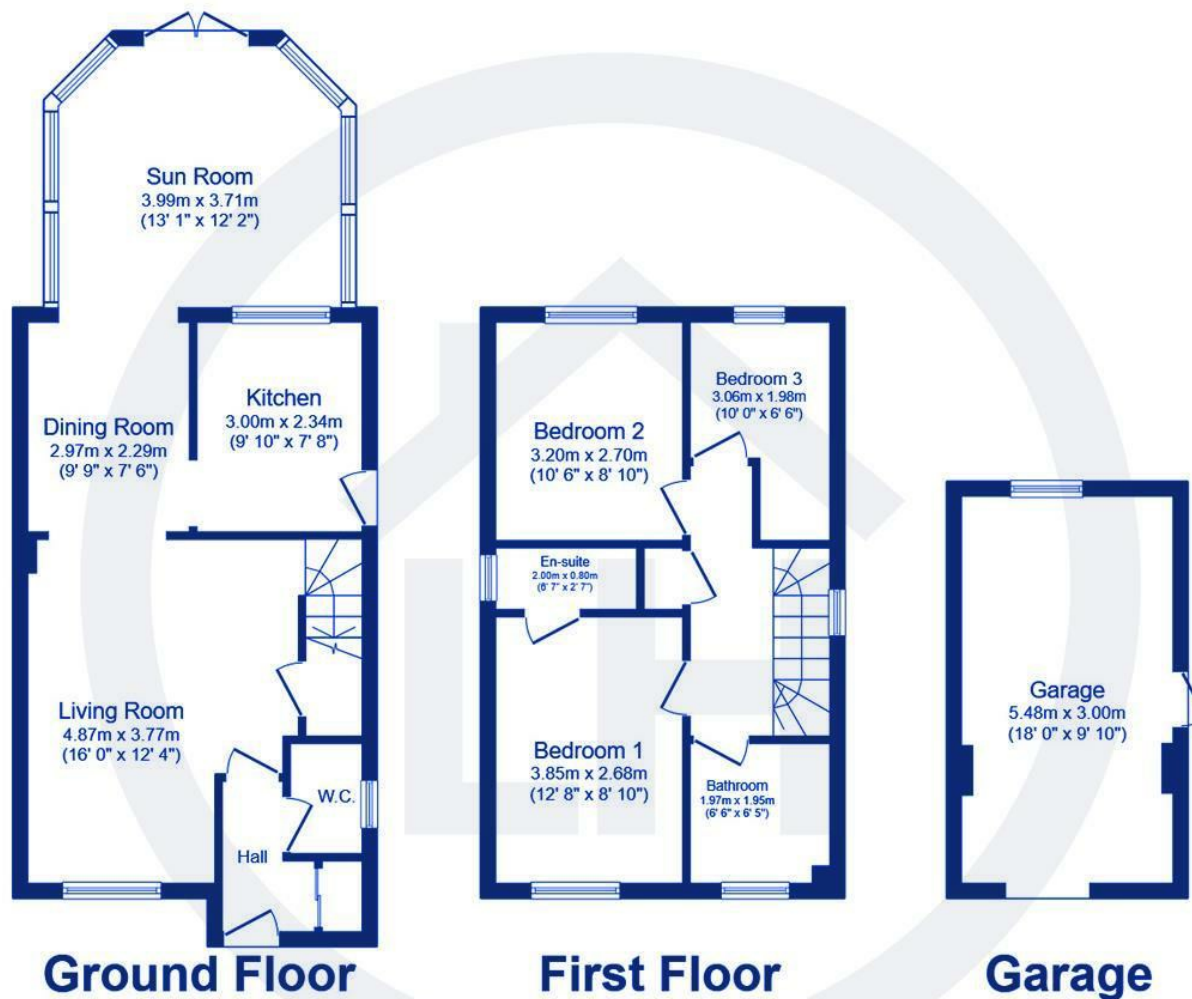
En-Suite
8'7 x 2'7



Bedroom 2
10'6 x 8'10

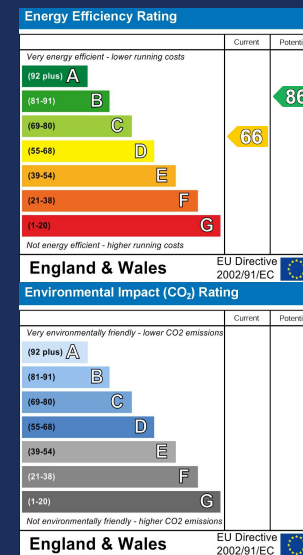
Bedroom 3
10'00 x 6'6

Bathroom
6'6 x 6'5



Total floor area 107.7 sq.m. (1,159 sq.ft.) approx

This floor plan is for illustrative purposes only. It is not drawn to scale. Any measurements, floor areas (including any total floor area), openings and orientation are approximate. No details are guaranteed, they cannot be relied upon for any purpose and they do not form part of any agreement. No liability is taken for any error, omission or misstatement. A party must rely upon its own inspection(s). Powered by www.focalagent.com



Lamborn & Hill have produced these details in good faith and believe they provide a fair and accurate description of the property being marketed. Following inspection and prior to financial commitment prospective buyers should satisfy themselves as to the property's suitability and make their own enquiries, relating to specific points of importance for example condition of items, permissions, approvals and regulations. The accuracy of these details are not guaranteed and they do not form part of any contract.

19-21 West Street, Sittingbourne, Kent, ME10 1AJ

T: 01795 293000

sittingbourne@lambornhill.com

www.lambornhill.com

