



Eastfields Avenue, SW18

£1,195,000

Waterview



A exceptional, fifth floor two double bedroom apartment with lateral space giving access to riverside balconies with breathtaking views of The Thames set in this exclusive development.

Riverside Quarter is a modern riverside development, overlooking the grounds of The Hurlingham Club opposite, close to a variety of restaurants, bars and cafes.





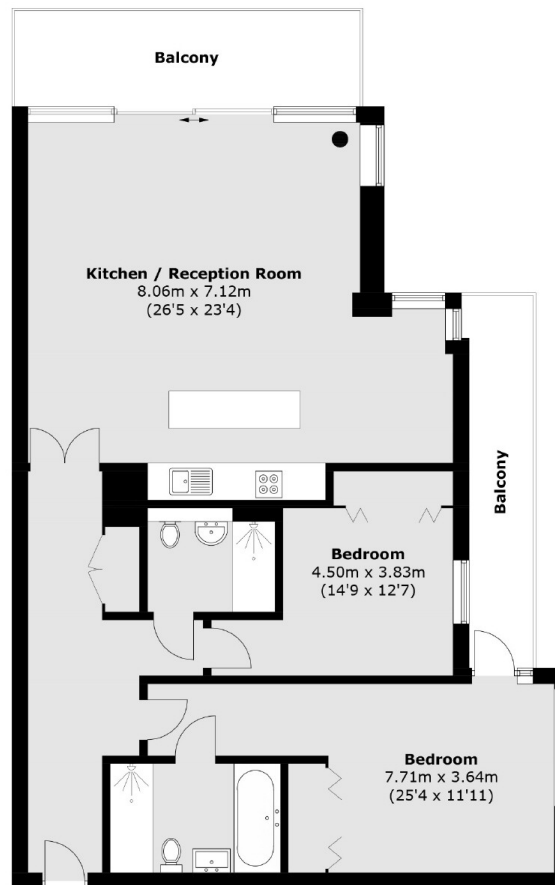
Accommodation is made up of entrance hall, leading to a large open plan living space which incorporates a stylish modern kitchen with island and breakfast bar, dining area and 26' living room with sliding doors to the river balcony. The large principal bedroom also has great river views with access to a second balcony and luxury en-suite. There is a further second double bedroom and well appointed shower room. The apartment has lift access, excellent 24 hour concierge service, secure parking and use of resident's pool and two gyms. The Thames Clipper also stops at Riverside Quarter.

### Features

- Exceptional Apartment
- River Balconies
- Large Living Space
- Residents Pool
- Secure Parking
- Thames Clipper Stop



# Eastfields Avenue, , SW18



Total area (approx.): 113.9 sq. m (1,226.0 sq. ft)  
Balcony area (approx.): 20.2 sq. m (217.4 sq. ft)

## Contact

To arrange a viewing call our office on the number below or visit our website.



Energy Rating: C. We aim to make our particulars both accurate and reliable. However they are not guaranteed; nor do they form part of an offer or contract. If you require clarification on any points then please contact us, especially if you're traveling some distance to view. Please note that appliances and heating systems have not been tested and therefore no warranties can be given as to their good working order.

