



Vicarage Crescent, SW11  
£525,000

Waterview



A bright and beautifully presented two bedroom apartment set in this riverside development a stone's throw from Battersea Square next to The Thames.

Archer House is located on Vicarage Crescent set overlooking The Thames close to a selection of local shops and restaurants at nearby Battersea Square.







Accommodation is made up of entrance hall leading to a spacious double reception room with a large bay window and solid wood flooring. There is a stylish newly fitted integrated kitchen/breakfast room. The generous, principal double bedroom has a range of built-in wardrobes with continued wood flooring, and the second bedroom is currently arranged as a home office. The well appointed, beautiful bathroom is also newly fitted.

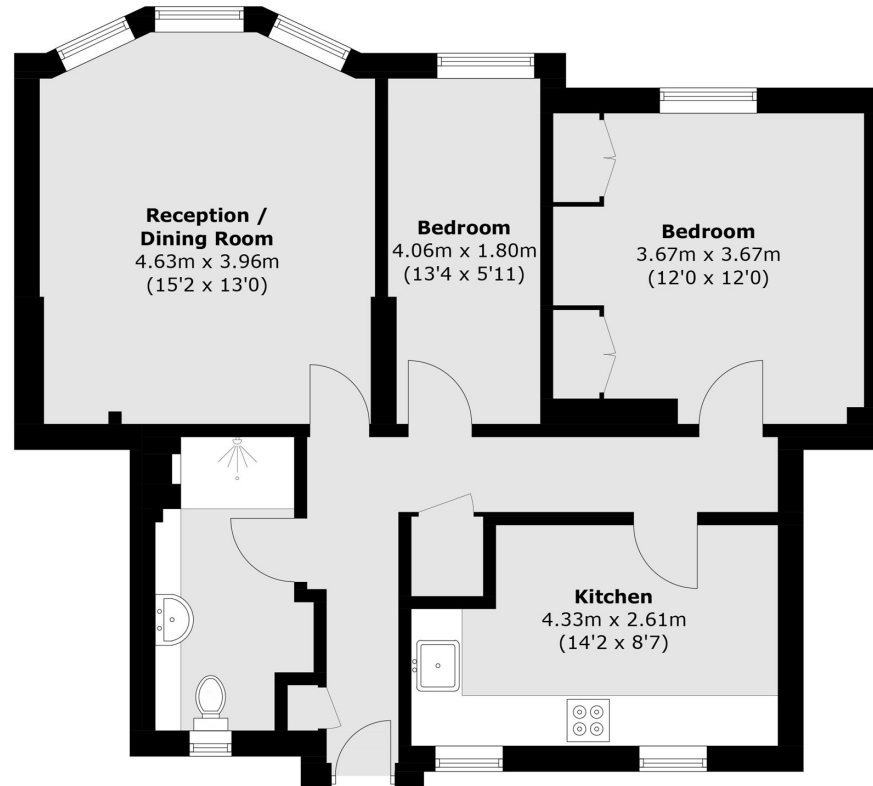
The apartment benefits from lift access within this well maintained block with on-site porter. Hot water and central heating are included within the service charge and there is an owned parking space within the development.

### Features

Spacious Apartment  
Riverside  
Stylish Interiors  
Lift Serviced  
Owned Parking  
Porter



# Vicarage Crescent, Battersea, SW11



## Third Floor

Total area (approx.): 67.3 sq. m (724 sq. ft)

### Contact

To arrange a viewing call our office on the number below or visit our website.



Energy Rating: . We aim to make our particulars both accurate and reliable. However they are not guaranteed; nor do they form part of an offer or contract. If you require clarification on any points then please contact us, especially if you're traveling some distance to view. Please note that appliances and heating systems have not been tested and therefore no warranties can be given as to their good working order.



